

Pickets Defy Injunction In SIU Case In Superior, Wis.

Pickets defied an injunction to cease picketing an Upper Lakes Shipping Co. vessel in Superior, Wis., yesterday, in an incident similar to waterfront labor disputes in Marquette during the past two weeks.

Circuit Court Judge Allen Kinney issued an injunction in Superior against picketing of the Douglas Houghton, operated by Upper Lakes Shipping Co., but picketing continued.

Hearing Tomorrow

As soon as deputies and police served a copy of the injunction notice on each picket, he was replaced by another. Four pickets kept marching at a time in the Superior incident.

A hearing on the injunction will be held in Superior tomorrow.

Carry Banners

As in the Marquette incidents, the pickets are members of the Great Lakes district of the Seafarers International Union, AFL-CIO. The union also has demonstrated against ships of the Toronto firm at other Great Lakes ports.

The SIU pickets carry banners saying the company is "depriving American seamen of Great Lakes jobs." The dispute involves the union's claim that Upper Lakes is an American-owned company and should employ American rather than Canadian seamen.

2 Released On Bond

In recent developments in the Marquette case, two SIU pickets arrested last Thursday in contempt of a restraining order issued by Circuit Judge Ernest W. Brown of Iron Mountain have been released from the county jail on \$500 bond each.

Their bond originally was set at \$1,000, but it was reduced at a hearing before Judge Brown Saturday. A hearing on a writ of habeas corpus for the two men will be held in Iron Mountain Tuesday.

Red Wing Picketed Here

SIU picketing of Upper Lakes ships has occurred on two occasions in Marquette this summer. SIU members picketed the Red

Wing at the Soo Line Railroad Co. dock June 28, in defiance of a restraining order issued by Judge Brown. The ship had to be loaded by Soo Line supervisory personnel.

Last Thursday picketing of the Red Wing occurred at the Lake Superior and Ishpeming Railroad Co. dock. The two pickets were served with a restraining order and were arrested after they continued to picket the Red Wing.

NLRB Files Motion

CHICAGO (AP) — The National Labor Relations Board filed a motion in U.S. District Court Wednesday in an effort to reopen its investigation into the refusal of a group of union members to load a Canadian vessel.

The NLRB asked the court to reverse an order handed down July 1 by Judge Julius Hoffman which ordered quashed 40 subpoenas issued to members of Local 418, Grain Elevator Operators Union.

Grain Freighter Involved

Union members have refused to load the vessel, the Howard L. Shaw, a grain freighter, which has been docked since April 22. The board contends the local members are engaging in an illegal boycott and obtained a temporary injunction from Judge James Parsons of U.S. District Court on June 4, barring the boycott.

Union National Bank Honored For WDMJ Series



The Union National Bank of Marquette was first to be issued to a business concern in Michigan by the attorney general, was made as a result of a series of radio advertisements concerning consumer protection. James Braddock (center), vice president of the bank, is shown accepting the award from Maurice E. Hunt, field representative of the attorney general's office. Looking on is Robert J. Luke, manager of WDMJ, The Mining Journal radio station. The award, reportedly the

principal on obligations incurred prior to Dec. 8, 1932, be increased (as provided by No. 21, Article X of the Constitution of Michigan) by two mills for general county purposes only, for a period of five years, from 1963 to 1967, both inclusive?"

Cigarette Advertising Not For Youngsters

WASHINGTON (AP) — George V. Allen, president of the Tobacco Institute, suggests that cigarette advertising should not be designed to appeal to young people.

And radio and television programs directed primarily to youngsters should not be sponsored by cigarette manufacturers, Allen said Tuesday in a statement.

The Mining Journal

166

Published by THE MINING JOURNAL CO., Ltd., daily except Sunday and legal holidays at Marquette, Michigan and especially devoted to Upper Peninsula interests. Second class postage paid at Marquette, Michigan.

MEMBER OF THE ASSOCIATED PRESS. The Associated Press is entitled exclusively to the use for publication of all the local news, printed in this newspaper as well as all AP news dispatches.

Member Audit Bureau of Circulations, Mich. Press Ass'n., Inland Press Ass'n.

Subscription rate BY MAIL: All Zones: \$1.75 per month, \$3.50 two months, \$4.75 three months, \$9.00 six months and \$15.00 yearly. BY CARRIER: All Zones: 45¢ per week, \$1.95 one month, \$3.85 three months, \$11.70 six months, and \$23.40 yearly. Address All Mail Subscriptions, change of address, Forms 3578, to: The Mining Journal, 249 Wash. St., Marquette, Mich.

Saturday Deadline For Filing For Absent Voter Ballots

Saturday at 2 p.m. is the deadline to make application for absent voter ballots for the special county referendum to be held Monday.

County electors will decide Monday whether to continue the two-mill tax levy, which has been in effect for the past five years, for another five years.

The proposition asks that the millage limitation be increased by two mills for general county purposes, because state law prohibits designating millage for any specific purpose.

Clerk's Office Hours

The levy, as in the past five years, is to be used for the Marquette County Social Welfare Department.

For the purpose of issuing absent ballots, Marquette City Clerk Everett H. Kent will keep his office (normally closed on Saturdays) open Saturday continuously from 8 a. m. to 2 p. m.

The deadline for issuing absent ballots is set by state law.

County Clerk Lloyd LeVasseur of Marquette urges persons who know they will be out of their voting precincts on Monday or who are unable to go to the polls because of illness or some other reason to vote by absent ballot.

No absent ballots had been issued in Marquette up to today, Kent said.

Only one absent ballot may be issued per written request. Hence, if more than one person in a family votes by absent ballot, separate written requests must be made for each absent ballot desired, Kent emphasized.

Required Information

Absent ballots must be marked and returned to the clerk's office before the close of the polls Monday. Polls are open from 7 a. m. to 8 p. m.

The following information is required from persons requesting absent voter ballots:

1. The reason the voter is unable to go to the polls Monday.
2. The address of the voter.
3. The signature of the voter.

The proposal for the two-mill levy extension has been strongly endorsed by the Marquette County Board of Supervisors.

The referendum will read on the ballot as follows:

"Shall the limitation on the total amount of taxes which may be assessed all property in the County of Marquette, State of Michigan, for all purposes except taxes levied for the payment of interest and

Louis Gets His Mouth Washed Out With Soap

MOUNT CLEMENS (AP) — Louis Winiarski had his mouth washed out with soap. He had to . . . otherwise, he'd still be in jail. The punishment was ordered by Justice of the Peace Francis A. Castellucci when Winiarski appeared before him on charges he used obscene language last Saturday in the presence of women and children in his backyard in Shelby Township. Winiarski, 46, also was ordered to pay a \$25 fine or serve one day in jail. Sheriff's deputies at Macomb County Jail said Winiarski used liquid soap.

Detroit Man's Death Ruled Accidental

BAD AXE (AP) — Involuntary manslaughter charges against Fred Swartz of Harbor Beach were dismissed Tuesday after a Harbor Beach coroner's jury ruled that the death of Frank Skender Jr. of Detroit was accidental. Swartz was accused of striking Skender at a wedding reception at Harbor Beach. The resulting fall fatally injured Skender. Huron County Prosecutor John Schubel recommended dismissal of charges after the coroner's jury finding.

More rivers rise in Colorado than in any other state, so it has been called the "Mother of Rivers."

Depend On Us To Carry Out Doctor's Orders

Your doctor knows best, but his skill is fully effective only when his prescription is accurately filled by your registered pharmacist, who works hand in hand with him to protect your health.

OPEN EVENINGS 'TIL 9
MARQUETTE PHARMACY
 JIM & JACK ERSPAMER
 221 W. WASH. ST. CA 6-3712

GETZ'S

July Clearance

IS NOW

IN PROGRESS!

BARGAINS GALORE . . . HURRY,
 SHOP EARLY FOR BEST SELECTIONS!

SALE ENDS SATURDAY, JULY 20TH

GETZ'S

218-220 S. FRONT ST. MARQUETTE
 USE METERED PARKING ADJACENT TO FIRE HALL ON SPRING ST.

NORDIC THEATRE

NOW Thru SAT. EVES. AT 7:00 P.M. ONE PERFORMANCE

Life, Love, Laughter — and some of the greatest music ever brought to the screen — sung by the incomparable Mario Lanza and other world-famed musical stars!

Showing Once Evenings at 7 P.M.

M-G-M presents **"The Great CARUSO"** with ANN LANA-BLYTH, JARLEA KIRSTEN-NOVOTNA, BLANCIE THEBOM

PLUS — Another Great Hit Showing
 Once Evenings at 8:50 P.M.

The Mighty Musical Of The Mississippi. A Glorious Love Story . . . wonderful song hits by Jerome Kern and Oscar Hammerstein, II.

Here comes the **M-G-M SHOW BOAT**

Starring
 KATHRYN GRAYSON—AVA GARDNER—HOWARD KEEL
 Joe E. Brown—Marge and Gower Champion

DELFT THEATRE

NOW SHOWING EVES. 7:00, 9:05

MATINEES — SAT. AT 1:30 P.M. — SUN. AT 2 P.M.

THEY FOLLOWED THE APACHE TRAIL
 across a land where danger wore a painted face!

Walt Disney presents **Savage Sam**

KEITH KIRK KRISTEN CORCORAN KEVIN MARTIN YORK CAMPOS PICKENS

FOR THE FINEST IN FAMILY ENTERTAINMENT!
 LOOK TO THE NAME WALT DISNEY
 COLOR CARTOON "SPRINGTIME FOR PLUTO"
 THIS ENGAGEMENT — MATINEE & EVENING
 ADULTS 85¢ JUNIORS 70¢ CHILDREN 50¢

Anderson Elected President Of Bi-County School Board

Gerald J. Anderson, Ishpeming Township, was elected president of the new Marquette-Alger Intermediate School District Board of Education at an organizational meeting yesterday.

The bi-county board elected Walter McClintock, Republic, vice president. Mrs. Nellie Moberg, Marquette, will be treasurer and G. Vance Hiney, Negaunee, will serve as secretary for the coming year.

Hiney is superintendent of the district.

The seven members of the Marquette-Alger board named Kemp H. Brown Munising, deputy superintendent of the new district. Brown was formerly superintendent of the Alger Intermediate School District.

The Marquette and Alger Inter-

mediate School Districts merged following a favorable vote of Alger County electors this spring. The two districts have become Michigan's first bi-county school district.

Hussein Swears In New Government

AMMAN, Jordan (AP) — King Hussein swore in a new government headed by Sheriff Hussein Ben Nasser, caretaker premier since April 21.

SPECIAL ELECTION

To the Qualified Electors:
NOTICE IS HEREBY GIVEN, That a Special Election will be held in the

Township of Chocolay, County of Marquette,
 State of Michigan

ON
MONDAY, JULY 15, 1963

AT THE TOWN HALL

FOR THE PURPOSE OF VOTING ON THE FOLLOWING PROPOSITION:
 Notice is hereby given that the Board of Supervisors of Marquette County has heretofore determined that it is necessary to raise an additional two (2) mills each year for general county purposes for a period of five (5) years, from 1963 to 1967, inclusive.

Shall the limitation on the total amount of taxes which may be assessed against property in the County of Marquette, State of Michigan, for all purposes, except taxes levied for the payment of interest and principal on obligations incurred prior to December 8, 1932, be increased by two (2) mills for general county purposes only, for a period of five years from 1963 to 1967, both inclusive?

Notice Relative to Opening and Closing of the Polls

ELECTION LAW, ACT 116, P. A. 1954

SECTION 729. On the day of any election the polls shall be opened at 7 o'clock in the forenoon, and shall be continuously open until 8 o'clock in the afternoon and no longer. Every qualified elector present and in line at the polls at the hour prescribed for the closing thereof shall be allowed to vote.

THE POLLS of said election will be open at 7 o'clock a. m. and will remain open until 8 o'clock p. m. of said day of election.

CLIFF JOHNSON, Twp. Clerk.

FISH FRY

EACH FRIDAY NIGHT
 Including Shoestrings, Cole Slaw, Rolls and Butter

85¢

LAKESIDE INN
 M-28 AT SAND RIVER

The Best for the money!

Yes! This beautiful General Electric Combination Freezer — No Frost Refrigerator is the best value we've seen for a long, long time. Check all the features listed below — its low, low special sale price. Rush over to Northland Appliance and inspect it first hand. Buy it on the easiest of credit terms.

● 13.2 CU. FT. NET VOLUME

- Zero degree freezer—3.1 cu. ft.—holds up to 108 pounds. Door shelf for 1/2 gal. ice cream cartons. 2 mini-cube trays under wire rack cover for easy tray removal . . . serves as handy shelf.
- 4 cabinet shelves. One slide-out. No coils on back. No door clearance needed at side.
- 2 porcelain vegetable drawers.
- Butter compartment.
- Door storage. Bottom shelf holds 1/2 gal. milk containers, tall bottles.
- Magnetic safety door. Opens easily; closes silently, securely.
- Protective door stops help prevent bumping and damage.
- Gleaming white finish. 64" high—30 1/2" wide—25 1/4" deep (less handle)

MODEL TB 304

Only \$259⁵⁰

WITH TRADE

NORTHLAND APPLIANCE

"ALWAYS YOUR STORE OF ASSURED SERVICE"

511-517 N. THIRD CA 6-7981 MARQUETTE



MID SUMMER SALE

SHOP NOW AND SAVE



SHORT SETS

SMART, NEW FASHION FIND AT WARDS LITTLE PRICE

2⁹⁹

Wards jamaica sets are perfect companions for cool summer fun, whether at home or on the go! Choose from a rainbow of sunny colors; stripes, checks, prints and solids. All easy-care cottons, in sizes 10 to 18. Hurry!



suit-look

DACRON-COTTON POPLIN GAYGLIDE® BY RELIABLE

10⁹⁸

Two from a group of 3-piecers, all crush-resistant, easy-care Dacron® polyester and cotton. Sheaths, pleated skirts, print or solid sleeveless blouses, buttoned or cardigan jackets! Brown or green. Sizes 7-15 and 8-16.



LADIES' JAMAICA SHORTS

1⁹⁹

Regular 2.98. Sizes 10-18. Superbly Tailored to Flatter in. Solid Colors and Plaids.

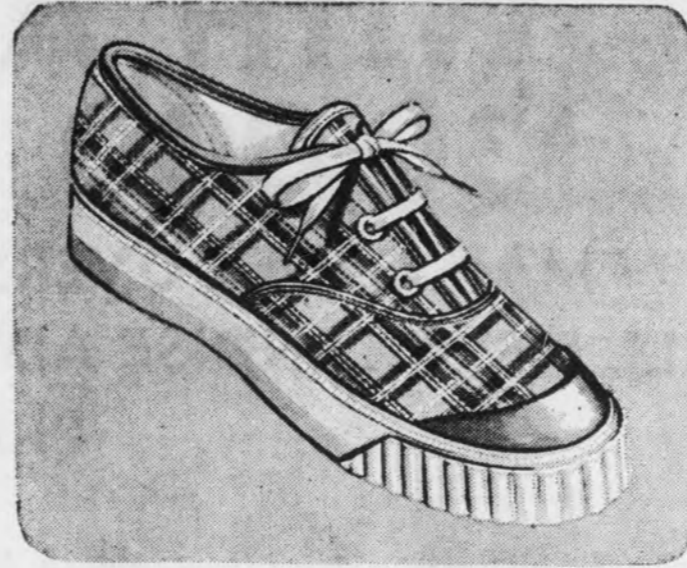


our muted plaids span the season

COOL, DARK, HANDSOME ... CAREFREE AS CAN BE

Smartly tailored separates of 65% Dacron® polyester, 35% cotton (dip, drip, wear!). Olive green or teal blue plaids. 8 to 16.

- A) Shirt in solid blue or green..... 3.98
- B) Button-front culotte, looks like a skirt. 8.98
- C) Collarless jacket, metal buttons..... 7.98
- D) Box pleated skirt, hemp belt..... 7.98
- E) (Not shown) Bermuda blouse..... 3.98
- F) (Not shown) Capri pants..... 7.98
- G) (Not shown) Straight skirt..... 5.98
- H) (Not shown) Bermuda short..... 4.98



ALL 2.99 SKIPS CHILDREN'S STYLES SALE-PRICED

Cushioned comfort Skips are washable, take lots of wear. Rugged army duck in white, colors and plaids. Some with bumper toes. Sizes from 5 to 12M. Shop today!

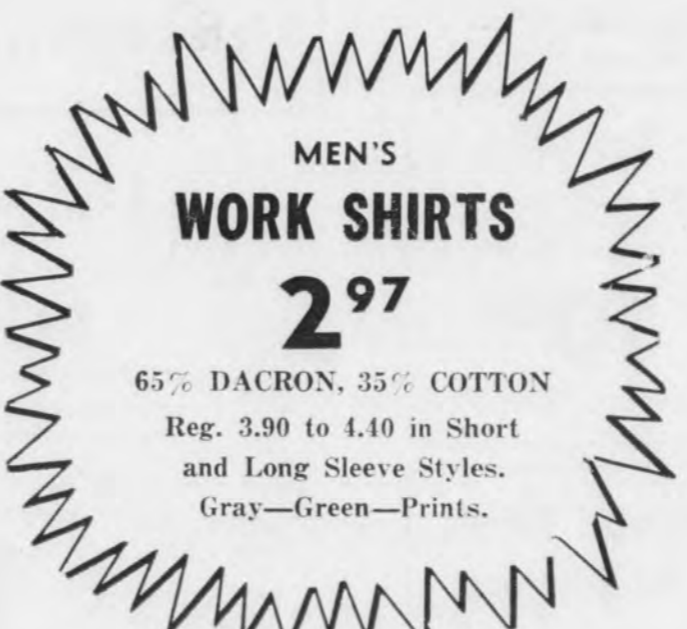
2⁶⁶ PAIR



LADIES' CAROL BRENT CREW SOCKS

2/88^c

Soft Combed Cotton for Comfort and Long Wearing. Guaranteed.



MEN'S WORK SHIRTS

2⁹⁷

65% DACRON, 35% COTTON
Reg. 3.90 to 4.40 in Short and Long Sleeve Styles. Gray—Green—Prints.

BREEZY COTTON

COOL STRIPINGS KEEP HER FRESH ALL SUMMER

2⁴⁷



Outstanding Ward swimsuit value for girls. Crisp cotton stripes keep her cool under the sun, dry quickly after swimming. Flouncy skirt 'n bow-trimmed bodice add to the fashion fun. Contrasting panty. Fresh-for-summer colors in favorite shades. Sizes 4-6x. Reg. 3.98 Now 2.97

NO MONEY DOWN! JUST SAY "CHARGE IT" AT MONTGOMERY WARDS!



LARGE ASSORTMENT MEN'S SHORT SLEEVE SPORT SHIRTS

1⁹⁷

Reg. 2.99 in Plains, Plaids and Checks including Ivy Style. S-M-L.



GIRLS' BERMUDA SHORTS

WASH 'N WEAR

1²⁷

Reg. 1.98 In Asst. Colors. Sizes 7 to 14 in Wash 'N Wear Cottons.

4¢ NOTION SALE

WARDS BARGAINS FOR SEWING, HOME AND YOU

4^c each



Leave it to Wards to put all these great import values together and bring them to you at a tiny price! What a fantastic quality assortment...find everything you need from safety pins, needles, and thimbles to ribbons, thread and zippers. Stock up!



GIRLS' SLEEVELESS BLOUSES

100% COTTON

77^c

Reg. 1.19 in Prints and Solid Colors. Sizes 7-11. Limited Quantities.



ASSORTED BEACH TOWELS

1⁴⁹

Reg. 1.99 in Asst. Patterns and Colors. 34" x 62" Reg. 2.99 Beach Towels Now 2.29



just say "CHARGE IT!"

NO DOWN PAYMENT NEEDED

Just present your Credit Card to save on any item at Wards—no need to carry cash!

Grand OPENING

WARDS NEW PARKING LOT WITH A PARKING LOT SALE \$30,000 STOCK LIQUIDATION

MAIL ORDER OVERSTOCK - FLOOR SAMPLES - FACTORY PURCHASES!
ALL MERCHANDISE ADVERTISED ON DISPLAY AT OUR NEW PARKING LOT!
PRICES REDUCED UP TO 50% OFF!



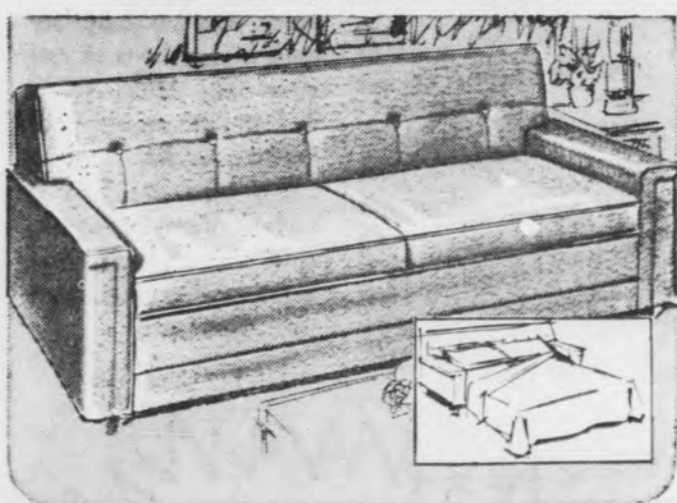
Wards Frontier styling brings the casual comfort of Western ranch life to exciting May Sale value. Glove-soft Vinelle expanded vinyl cover on rocker and sofa-bed, smartly bisuit-tufted over resilient Ward-Foam* and spring construction. Sofa-bed sleeps two. Texas-style solid ash cocktail and endtables in warm brown finish.

*Wards name for urethane foam cushioning material



220⁰⁰
Reg. 249.00
No Money Down

ONLY 2 SOFAS AT THIS LOW, LOW PRICE!



BED INSIDE SOFA
WARDS OWN NEW STYLE HOUSE DESIGN

Lift off cushions, tug lightly, inside is a true innerspring bed for 2 — close again with bedding in place! Nylon frieze, with 4" Ward-Foam* cushions.

179⁹⁵
NO MONEY DOWN
8.50 A MONTH

5 CHAIRS AT THIS GREAT SAVINGS!



SUPERB COMFORT DELUXE FOAM-CUSHIONED RECLINER

Ward-Foam* seat, arms, footrest; upholstered in glove-soft self-expanded Naugahyde® vinyl. Has automatic footrest, hardwood frame, steel spring base.

95⁰⁰
REG. 99.95
NO MONEY DOWN
5 A MONTH

FLOOR SAMPLES Major Appliances
Only 1 Of A Kind Reduced Up To **1/4 OFF**
Washer—Stereo—Dryer
Gas—Range—Electric Range
Freezer—Refrigerator

- 1. Patio Table Reg. 12.95 **10.88**
- 6 FOOT
- 2. Bar-B-Q Table & Bench Reg. 26.95 **22.88**
- 3. 7 Pc. Dinette Set Reg. 89.95 **69.00**
- 4. Sit & Stand Car Seat Reg. 6.98 **4.88**
- FLOOR SAMPLES
- 5. Occasional Tables **1/3 Off**
- 6. Infant Seats Reg. 5.95 **4.88**

24 x 60" RUNNER
With Non-Skid Foam Rubber Back
Use anywhere in your home! Foam back cushions steps, helps prevent falls. Rayon loop pile in 4 smart tweeds masks soil, cleans easily.
24x70" runner **2.66**

1⁹⁹
NO MONEY DOWN

Car Cribs
Will Convert to Car Seats. Perfect for Summer Travel.
10⁸⁸
Reg. 12.95

Painted Chests & Dressers
For Children's Rooms
1/3 Off Reg. Price

Lawn Chairs
Limited Quantity
Reg. 7.95 **6⁸⁸**

Children's Wooden Picnic TABLES
5⁹⁵
Sturdy, Unfinished Construction

PLAY GYM SETS
30⁸⁸
Reg. 34.95 with Slide

CARTON SALE Vacuum Cleaner
Save 5.00 Wards Cannister Cleaner
With Viber Beat
Reg. Now 59.88 **34.88**

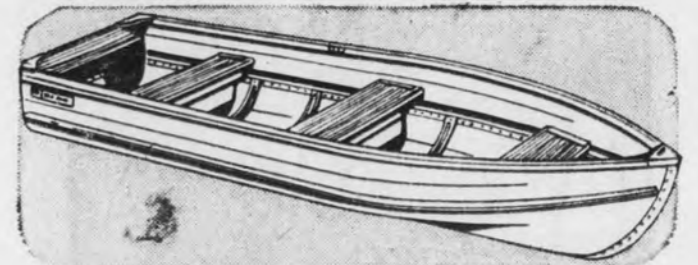
CARTON SALE Dehumidifier
4-Gal. Capacity
Reg. 79.95
NOW **69⁰⁰**

1 LOT OF GUNS
Youth's 20 Gauge Shotgun
Reg. 33.75 **25⁰⁰**
.32 Marlin
Reg. 86.95 **70⁰⁰**

Winchester Shotgun
Reg. 144.95 **100⁰⁰**
.300 Savage
Reg. 99.95 **70⁰⁰**

1 Lot Of Fishing Rods
1/3 OFF

ENTIRE STOCK STRATALITE LUGGAGE
REDUCED **1/3 OFF**

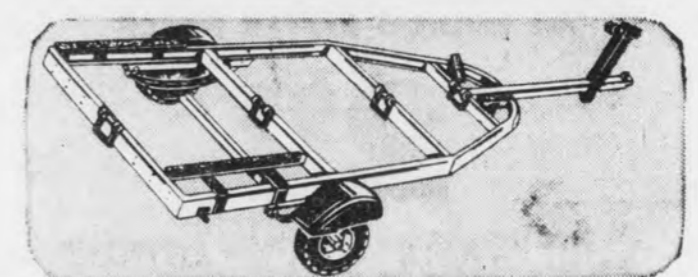


12-FT. ALUMINUM AUTO-TOP BOAT

Reg. 167.00 Sea King designed for stability. 1-pc. bottom; Foam flotation.

140⁰⁰

HUGE REDUCTION BOATS-OUTBOARD MOTORS-GUNS-CAMPING EQUIPMENT



149.00 SEA KING 900-LB. TRAILER

Carries boats up to 16 ft. Axles adjust to handle various loads. 12-ga. steel frame.

120⁰⁰

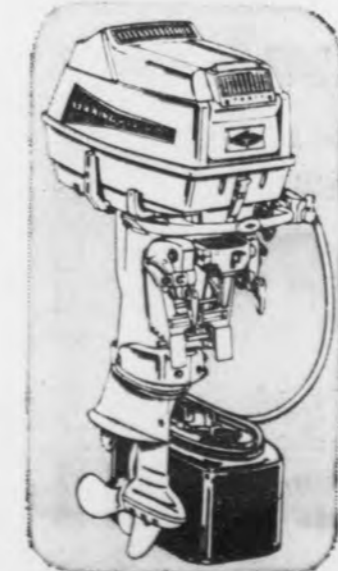
- Volleyball & Badminton Set Reg. 8.95 — Now 6.00
- Foam Ice Chest Reg. 2.99 — Now 2.27
- 1963—15 HP Outboard Reg. 338.00 — Now 270.00
- 1963—3 HP Outboard Reg. 125.00 — Now 105.00
- Children's Spin Set .. Reg. 7.95 — Now 4.00
- Large Foam Ice Chest .. Reg. 5.99 — Now 5.00
- 1-Gal. Picnic Jug Reg. 2.99 — Now 2.50
- Landing Net Reg. 79c — Now 67c
- Tackle Box Reg. 99c — Now 87c
- Plastic Outboard Tanks Reg. 12.95 — Now 10.00
- Dual Cont. System .. Reg. 22.95 — Now 17.00
- Boat Landing Net Reg. 99c — Now 87c
- 2 1/2-Gallon Gas Cans .. Reg. 2.59 — Now 2.20
- 1200-Lb. Boat Winches Reg. 6.95 — Now 5.88
- Baseball Gloves Reg. 7.99 — Now 6.00

1 LOT OF TRICYCLES

- 16" DELUXE Reg. 16.99 Now **14.00**
- 12" DELUXE Reg. 14.99 Now **12.00**
- 16" Deluxe Sidewalk Bike Reg. 24.88 Now **19.88**

ALUMINUM EXTENSION LADDERS REDUCED

- Reg. 19.95 16 ft. Now 16.95
- Reg. 21.94 20 ft. Now 21.95
- Reg. 28.85 24 ft. Now 24.95
- Reg. 34.95 28 ft. Now 30.95
- Reg. 49.95 32 ft. Now 42.95



SAVE . . . SEA KING 40-HP OUTBOARD MOTOR

Reg. 590.00
Now **490⁰⁰**

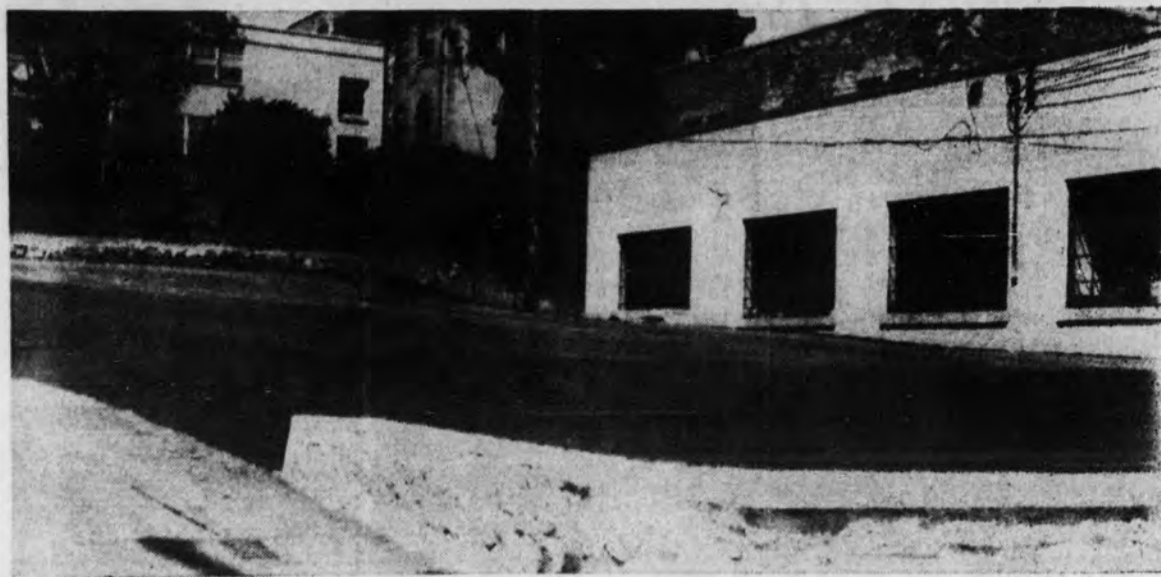
Smooth! Quiet! Powerful! Skims skiers easily. Elec. starting; auto-type fuel system; 6-gal. tank; full gearshift.

Fri. & Sat. Only

FREE

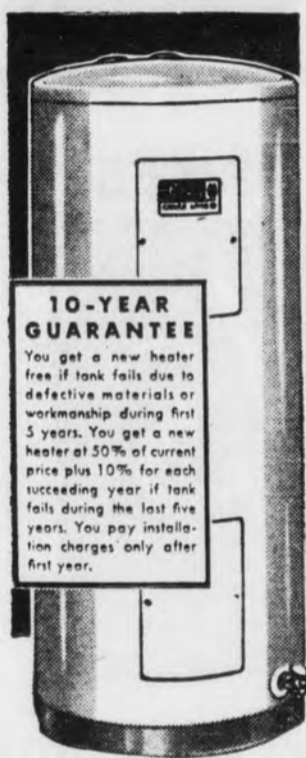
Coke For All

Children Must Be Accompanied By Parents



30 CAR LOT FOR THE CONVENIENCE OF WARDS CUSTOMER SHOPPING. WARDS NOW HAVE 2 PARKING LOTS, TOTAL OF 100 STALLS. DUE TO HIGH RENTAL COSTS IT IS NECESSARY TO CONFINE PARKING TO A 2 HOUR LIMIT.

BIG 11.00 SAVINGS



REGULAR 69.95
FAIRWAY 30-GAL. ELECTRIC HEATER

54⁸⁸

NO MONEY DOWN

Now, end your "water-waiting blues" for good with this powerful Fairway electric water heater. The newly designed heat trap assures top efficiency. Two heating elements for speedier recovery; temp. adjusts 120-180°. Glass-lined tank. 52-gal. model. **74.88**

1 HOT WATER GAS FIRED BOILER

Original 342.00

Now **150.00**

1 AUTOMATIC DISHWASHER

Display Model
Original Price 219.00

Now **150.00**

ELEC. FOOD DISPOSER

Reg. 39.99

Now **30.00**

DOUBLE BASIN STEEL SINK

32 x 21
Reg. 12.88

Now **8.00**

1 LOT METAL AWNING

Reduced

Over **75%**

ALUMINUM DOORS

Self Storing
35½ x 80
Reg. 49.95

Now **30.00**

Save 19.95

BASEMENT ALUMINUM WINDOWS

½ Off
Reg. 4.29

Now **2.00**

GARDEN MARK 10-6-4 LAWN FOOD

Reg. 2.89

Now **1.99**

BIG 10.00 SAVINGS SUMP PUMP

PEDESTAL-TYPE

Now **33.00**

Delivers up to 3,100 gals. per hour at a 5-ft. head! Made of molded materials that resist normal sump water abrasion. Heavy-duty, 1/3-HP motor has overload protection. Strong, one-piece fiberglass rod and positive adjustable float.

HOUSE WARES
500 UNITS REDUCED UP TO 75% Including

- 14.95 G.E. Travel Iron 11.00
- 29.95 50-Pc. China St. 21.00
- 12.95 Electric Skillet 10.00

WARD'S PARKING LOT SPECIALS
FREE BALLOONS FOR THE KIDDIES FREE KEY CASE FOR MOM OR DAD

1. Pack Mule Motor Scooter: Ideal for on and off the road operation. Was 169.95, Now \$149.95.
2. T-Floor Mats — Special while they last. 2 For 77c.
3. Rear View Mirror — Special Purchase, \$1.89 Each.
4. Oil Filters — Spin-On Type, \$1.99. Cartridge Type .99c.
5. T-Bird Seat Cover — \$4.44 (Front Seat Only).
6. Riverside Seat Belt — \$5.89 Value, Now \$3.33 Each. Meets all SAE Specifications.

Ward's All-Season Oil
5 Qt. Can \$1.44-\$1.85 Value

OSCILLATING LAWN SPRINKLER
Reg. 4.45
Now **3.77**

TURRET SPRINKLER
Set For Any Size Lawn
Reg. 3.29
Only **2.88**

GARDEN HOSE NOZZLE
Reg. 1.79
1.47

ELECTRIC BARBEQUE LIGHTER
Reg. 1.99
1.66

50 FOOT RUBBER GARDEN HOSE
Reg. 7.49
6.44

50 FOOT PLASTIC HOSE
Reg. 4.69
4.22

FREE 80 Lb. Cliff Charcoal Briquettes with the purchase of any BRAZIER
Selling Over **15.00**



TRUCKLOAD SALE ON NEW PARKING LOT ACROSS FROM CLIFTON HOTEL ON RIDGE ST.

TIRES | INSLATION | PANELING

RIVERSIDE TIRES



RIVERSIDE AIR CUSHION
\$10 4 Full Plies
6.70-15 Tube-Type Blackwall

GUARANTEED 18 MONTHS! Get a full four ply Nylon tire at Wards low price! Deep tread for positive traction.

6.70-15 or 7.50-14 tubeless blackwall, now\$12*
6.70-15 or 7.50-14 tubeless whitewall, now\$15*

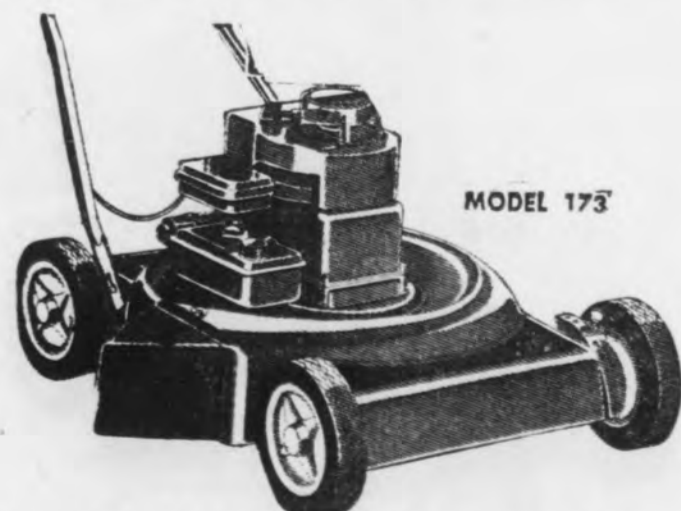
RIVERSIDE SAFETY NYLON
\$13 4 Full Plies
6.70-15 Tube-Type Blackwall

GUARANTEED 21 MONTHS! A truly outstanding buy... wider tread design, plus low profile construction for greater stability and safer all-weather starts and stops.
*Plus excise tax and tire off your old car

TRUCKLOAD SALE PANELING
4 x 8 MAHOGANY
4.40 PER PANEL

TRUCKLOAD SALE ROCK WOOL SPUN ROCK
99c BAG
COVERS 20 SQ. FT. 3 INCHES THICK

CARTON SALE 23 POWER MOWERS
SAVE \$10.00
ONLY 15 AT THIS LOW PRICE



"CIRCLE JET" DECK
22", 3-HP ROTARY MOWER

New steel deck with front and rear baffles provides positive cutting action, free-flowing discharge. 8" wheels are inset for close side trim. Recoil starter.
Reg. 73.90
63⁹⁰
NO MONEY DOWN

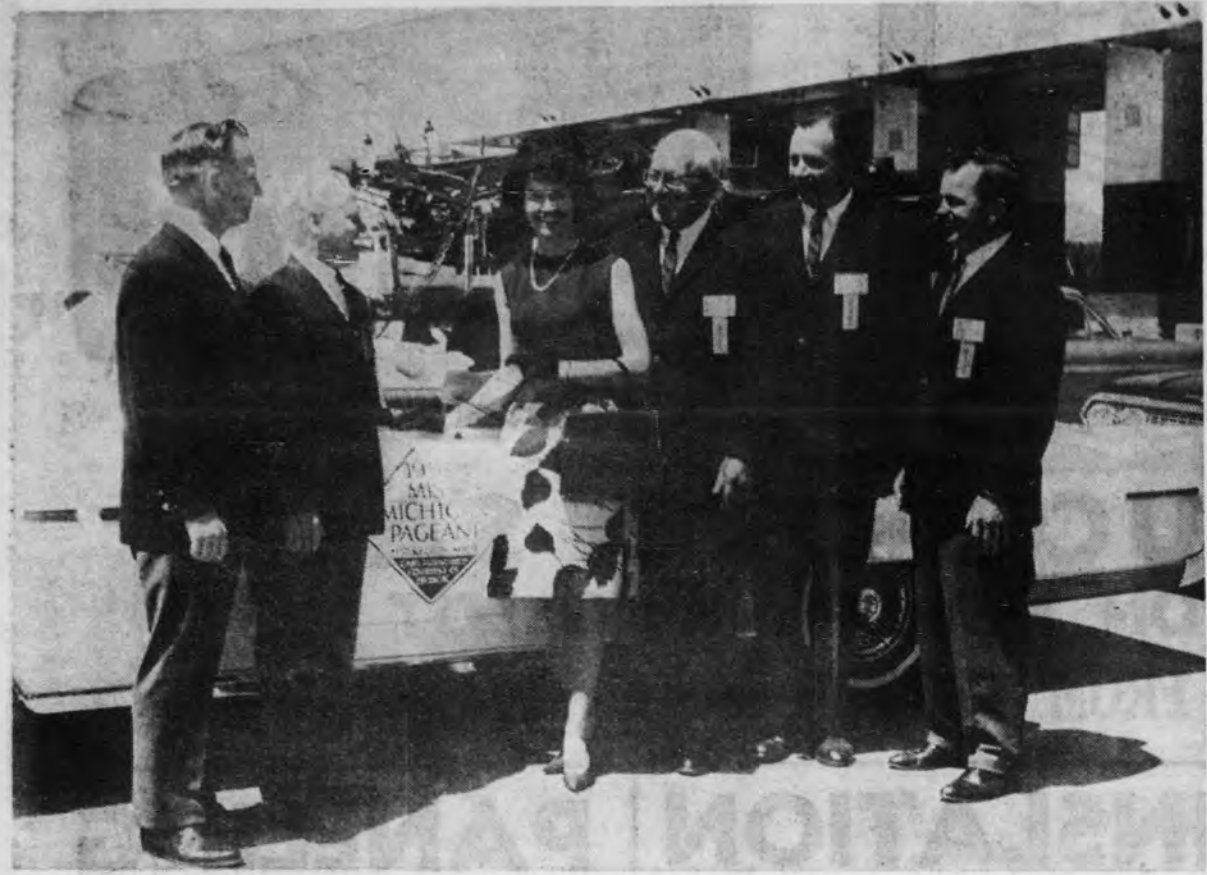
CARTON SALE SUPER HOUSE PAINT



28% SAVING

IN 4 GAL. CASE REG. 6.89 GAL. 4⁸⁸ Gallon In 4 Gal. Case
ONE-COAT SUPER COVERS IN JUST ONE COAT, PROTECTS LIKE TWO COATS!

Marquette Stages Big Welcome For Miss Michigan Of 1963



Marquette staged a gala welcome for Kathleen McLaughlin of Ishpeming, Miss Michigan of 1963, when she returned to the Upper Peninsula yesterday from Muskegon, where she won state beauty crown Friday. Marquette Ambassadors were on hand to greet Miss Michigan at Mackinac Bridge (top photo at left). Ambassadors are (from left) Robert Luke, Harlan Larson, president of the Marquette



Chamber of Commerce; Clayton Dahlke, Robert Brebner and James Tomlin. Among those greeting Miss Michigan on platform set up in front of Marquette Chamber of Commerce Building (top photo at right) were Marla Williams (left), Miss Marquette, and Mary Ellen McGuire (right), Marquette, runners-up to Miss McLaughlin in Miss

Upper Peninsula contest held here last spring. Second photo from bottom shows Marquette Mayor Fred Rydholm presenting Miss Michigan with key to city. In bottom photo, Marquette Ambassador Robert Luke presents Miss Michigan with bouquet of roses from Ambassadors. — (Mining Journal photos.)

City Acts On Proposal For Trailer Court

An easement or other appropriate instrument for a roadway over city-owned property leading to the site of a proposed trailer court off Wright St. will be considered by the city commission at its special meeting Monday.

City Attorney Waldo McCrea was instructed at this week's city commission meeting to prepare an easement or other appropriate instrument for consideration by the commission.

Request By Gannon

The action was taken in answer to a request pending before the commission from William K. Gannon of Eisemann's Motor Court. Gannon is interested in installing overnight trailer parking facilities on property he owns west and north of the motor court on Wright St.

Gannon has asked the commission for access rights from Wright St. to the proposed site over city-owned property. He proposes to improve the existing road on city property which leads to the proposed trailer court site.

Other Request Denied

In answer to a question from Commissioner Elmer K. Carlson, who noted that Gannon already has property fronting Wright St. and asked why the easement for the city-owned road is necessary, City Manager Thomas Moore said, "Eight buildings make up Eisemann's Motor Court on Wright St. Behind the cabins there is a park and behind that there is space for overnight trailer parking. With the easement over city property, trailers

wouldn't be seen from the road."

Also at this week's meeting, the commission denied a request presented in June in a petition signed by Mr. and Mrs. Rudolph K. Heikkala requesting that the city vacate Freestone Alley, beginning at Division St. and running east to U. S. 41, and change the course of Billy Butcher's Creek from its intersection point with Freestone Alley and then north on the city owned lot 49 to join the original bed.

Denied at the same time was a request made in a petition signed by the Heikkalas and other property owners on Division St., requesting that the city install water and sewer mains on Furance St. from Division St. east to U.S. 41 and for paving and curbing of the same street next summer.

State To Open Bids On 32 Road Projects

LANSING (AP) — Bids on 32 highway construction projects totaling \$7.9 million will be opened at Lansing July 17 by the State Highway Department. Major projects include more than half a mile of paving on the Walter Chrysler expressway in Detroit, three miles of modernization of Telegraph Rd. in Wayne County, a weigh station near New Buffalo, in Berrien County, a half mile of improvements on I 94 in Port Huron and seven overpasses on the U. S. 27 freeway in Clare and Isabella counties.

FEET ACHE, ITCH?

14 of all your bones are in the feet. No wonder they ache, swell, throb, itch. Bathe feet twice daily with T-4-L. Solution for relief of the 33 bones, 66 joints plus ligaments. Cures athlete's foot, too (sloughs off infection — watch healthy skin replace it) or your feet back at any drug store if not pleased IN ONE HOUR. TODAY at Pendl Pharmacy.

U.S. Moves Have Hurt Cuban Economy

WASHINGTON (AP) — The United States has released data to support its claim that mounting

moves to isolate Cuba have resulted in a steady deterioration of the Cuban economy.

Among the figures released Tuesday: Western shipping to Cuba has been reduced from 128 arrivals at Cuban ports in Janu-

ary 1962 to only 12 last January; Cuba's gross national product was down 25 per cent in 1962 from the 1958 level of \$2.5 billion.

Except for some foods, medicines and medical supplies, normal U.S. commercial trade with

the Communist country was placed under embargo by the United States on Oct. 19, 1960.

There are 4,014,489,600 square inches in a square mile.



Colorful Bridges In Offing?

LANSING (AP) — The Highway Department is experimenting with the idea of painting bridges any color of the rainbow.

A research and test project is being carried out on a seven-mile section of I-94 now under construction in St. Clair County.

Six freeway overpasses will be painted in six different colors — maroon, foliage green, ivory, beige, rose-cinnamon and light green.

Enamel

The department traditionally has used a varnish-based aluminum paint as the finish coat on the structural steel of all highway bridges, overpasses and interchanges.

The paint being tested is an alkyd-resin enamel that comes in any color, in contrast to the silver aluminum paint.

The department thinks the pastel colors will be more durable and reduce maintenance costs. The colors also will break up the monotony of shiny silver bridges, it is figured.

One Exception

Commissioner John Mackie told his engineers they could pick any color they wanted for the test—except one.

"I don't want any pink bridges," Mackie said.

Soviets Charge Plot To Wipe Out Rebels

MOSCOW (AP)—The Soviet Union claims that representatives of the Western-sponsored Central Treaty Organization are plotting a campaign to help Iraq wipe out rebellious Kurd tribesmen.

This involves establishment of foreign strongholds near the Soviet border and therefore threatens Soviet security, Foreign Minister Andrei A. Gromyko charged Tuesday in statements handed to the ambassadors of Iraq, Iran, Turkey and Syria.

Geraldine Page Chosen To Attend Film Festival

NEW YORK (AP) — Actress Geraldine Page, selected by the U. S. government as official representative to the Moscow Film Festival, left New York City Tuesday for the Soviet capital.



Keepsake INTERLOCKING RING SETS

Always together . . . thanks to Keepsake's hidden lock that prevents the rings from twisting and turning on the finger.



Jean's Jewelry

118 S. Front Marquette

SINCE 1872...TOP-QUALITY MERCHANDISE AT WARDS LOW PRICES!

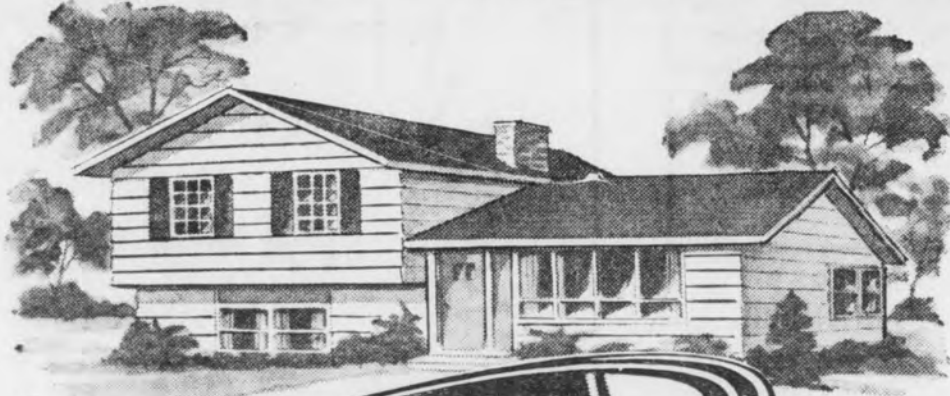
only at Wards

Only at Wards so many outstanding quality features, all excitingly combined in a top brand item!

Only at Wards a product made to such exacting specifications—designed to excel all others in its price bracket!

Only at Wards a special "get-acquainted" low price, offered nation-wide at all our stores, for a limited time only.

save time, money, effort . . . ONE COAT DOES THE JOB



SAVE 7.64 ON 4-GALLON CASE!
ONE-COAT SUPER HOUSE PAINT

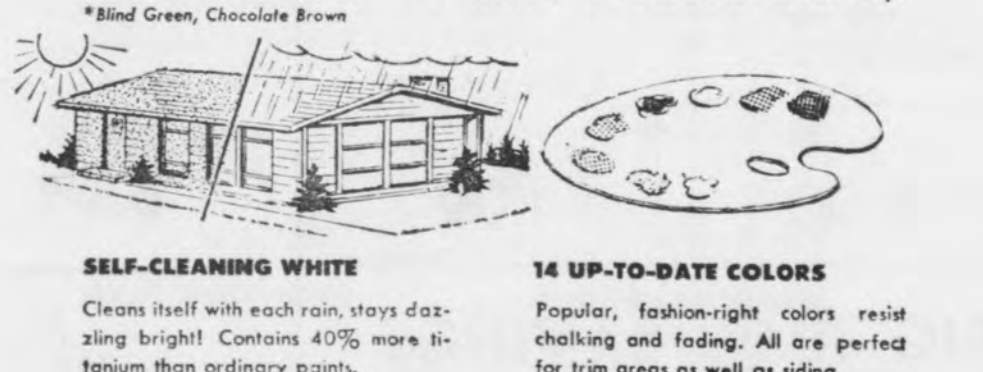
REG. 6.79
4 88
per gallon in 4-gal. case
SINGLE GAL. . . 5.44



- Won't discolor from fumes, gases, smog
- Resists unsightly mildew discoloration
- 1 coat covers, protects like 2 coats

Why sacrifice the time, trouble and expense of two coats when one coat does the job better? Wards adds extra titanium (best hiding pigment known) to the formula to assure one-coat coverage over any color—even black. Spray or brush it on, Style House One-Coat Super goes on easily, dries to a lustrous, uniform finish that stays bright and clean for years on wood or metal! It stays new-looking because special additives help prevent discoloration eyesores caused by mildew, smoke-and chemicals. And except for two colors*, it's non-toxic when dry.

*Blind Green, Chocolate Brown



SELF-CLEANING WHITE
Cleans itself with each rain, stays dazzling bright! Contains 40% more titanium than ordinary paints.

14 UP-TO-DATE COLORS
Popular, fashion-right colors resist chalking and fading. All are perfect for trim areas as well as siding.

WHY STYLE HOUSE IS YOUR BEST BUY

Wards own Style House paints are manufactured in our own modern plants under strictest quality control. And they're tested in both lab and field (in all areas and climates) to meet the high standards established only at Wards.

SATISFACTION GUARANTEED or Your Money Back At WARDS!

THE BIGGEST FURNITURE SALE OF THE YEAR Annual JULY Clearance SALE

SAVE 10% - 20% - 30% - 50% & MORE ON QUALITY FURNITURE - APPLIANCES - CARPETS

SAVE ON SUCH FAMOUS BRANDS AS - WESTINGHOUSE - MAYTAG - PHILCO - KARPEN - INTERNATIONAL - TELL CITY - SIMMONS
SEALY - LEES RUGS & CARPETS - LLOYD - CHROMCRAFT - DREXEL - MASTERCRAFT - STIFFEL LAMPS - MIDWEST - EMPIRE - NOVA
ETHAN ALLEN - BASSET - DEARBORN - KING KOIL - COLEMAN - KROEHLER BEDROOM - PONTIAC - MODERN - COMFORT
LISTED IN THIS AD ARE ONLY A FEW OF THE HUNDREDS OF ITEMS NOW ON SALE! COME EARLY FOR BEST SELECTION!

LIVING ROOM

- Reg. 239.00—Mastercraft, Foam Cushions, Beige Nylon
2-Pc. Living Room Suite 179.00
- Reg. 399.95—Schneider Custombilt—Foam Cushions, Arms & Back Rose Beige Nylon
2-Pc. Living Room Suite 199.88
- Reg. 399.95—Fruitwood Frame—Foam Rubber Cushions, Beige Nylon Matelasse
Sofa — French Provincial 229.88
- Reg. 269.95—Green Metallic Frieze, Foam Cushions, International
2-Pc. Living Room Suite 179.88
- Reg. 269.95—Mastercraft—Foam Rubber, Brown Nylon, Lifetime Construction
2-Pc. Living Room Suite 199.00
- Reg. 279.95—International—Brown Frieze, Foam Cushions, Wide Arm Styling
2-Pc. Living Room Suite 199.88
- Reg. 249.95—International—Foam Cushions, Choice Brown or Turquoise Nylon
2-Pc. Living Room Suite 199.88
- Reg. 449.95—Mastercraft—Beige Nylon, Foam Rubber Cushions, Lifetime Construction
3-Pc. Curved Sectional Sofa 339.00
- Reg. 269.95—Foam Rubber, Fully Upholstered in Char. Brown Nylon
Sofa — 84" Danish Modern 239.00
- Reg. 339.95—Beige Nylon, Loose Pillow Back, Foam Rubber, International
Sofa — 98" Danish Modern 269.88
- Reg. 339.00—Beige Nylon, Foam Rubber Cushions, Lifetime Construction
2-Pc. Suite — Mastercraft 269.00
- Reg. 449.95—Grey Nylon, Foam Rubber, Skirted Base
2-Pc. Sectional Sofa — Karpen 349.88
- Reg. 549.95—Karpen—Toast Nylon, Foam Rubber — With 2 Bolsters
3-Pc. Curved Sectional Sofa 449.88

DINING ROOM & DINETTES

- Reg. 189.95—Dearborn Provincetown, Nutmeg, 36x48x60" Plastic Top Table, 4 Solid Maple Chairs, 1 Set Only
5-Pc. Maple Dinette 129.88
- Reg. 129.95—Mahogany, 40x25" with Leaves Down, 40x 61" with Leaves up, Extends to 81", 1 Only
Dropleaf Table — Tell City 89.88
- Reg. 189.95—42x27" with Leaves Down, Extends to 91", Cherry in Tuscan Brown Finish
Dropleaf Table — Drexel Palazzo 149.88
- Reg. 119.95—36x60" Dinette Table, Bronzotone with Inlaid White Gold Fleck Top, 6 Matching Chairs, Slightly Damaged
7-Pc. Chromcraft Dinette 79.88
- Reg. 129.95—Big 36x72" Extension Table, Chrome with White Gold Fleck Plastic Top, 6 Upholstered Chairs
7-Pc. Lloyd Dinette 99.88
- Reg. 129.95—36x60" Extension Table, Walnut Plastic Top with Self Edge, 4 Upholstered Chairs
5-Pc. Lloyd Dinette 99.88
- Reg. 99.95—36x48x60" with Beige Plastic Top, Black Legs, Vertae
Dinette Table 69.88
- Reg. 79.95—36x48x60" with Beige Plastic Top, Black Legs, Vertae
Dinette Table 49.88
- Reg. 69.95—Chrome Dropleaf Table and 2 Chairs
3-Pc. Chromcraft Dinette Set 49.88
- Reg. 69.95—Bronzotone dropleaf Table and 2 Chairs
3-Pc. Chromcraft Dinette Set 49.88

SEALY HOLLYWOOD BEDS

- Values to 69.00
49⁸⁸
- Plastic Headboard
 - Innerspring Mattress
 - Box Spring
 - Set Of Legs

Modern SOFA BEDS

- Reg. 89.95
69⁸⁸
- Opens To Sleep 2
 - Bedding Compartment Under Seat
 - Beige or Brown

3 PC. MODERN SOFA BED GROUP

- Reg. 219.00
149⁸⁸
- Green Plaid Upholstery. Sofa Bed Opens to Sleep Two — Matching Occa. Chair & Platform Rocker Included.

2 PC. MODERN SOFA BED SUITE

- Reg. 219.00
139⁸⁸
- Green Nylon — Sofa Bed & Platform Rocker — Slightly Damaged.

Maple SPOON HOLDERS

- Reg. 3.95
1⁹⁸
- Nutmeg Maple Finish

TREE & POLE LAMPS

- Reg. 19.95
9⁸⁸
- Walnut Poles & Bases With 3 Gold Decorated White Plastic Shades

WESTINGHOUSE LAUNDROMAT AUTOMATIC WASHER

- Reg. 249.95
149⁸⁸
- Front Loader 1 Only

CHAIRS

- Reg. 29.95—Armless, Beige, Turquoise or Persimmon Plastic
Occasional Chairs — Bronze Metal 19.88
- Reg. 49.95—Maple Arms, Green or Gold
Platform Rockers 34.88
- Reg. 89.95—Mastercraft
Lounge Chair — Beige Nylon 49.88
- Reg. 89.95
Platform Rocker — Green Nylon 59.88
- Reg. 99.95—Beige, Foam Cushions
Lounge Chair — Danish Modern 59.88
- Reg. 59.95—Blue Plastic
Lounge Chair — Modern 29.88
- Reg. 39.95—Walnut Arms
Swivel Rockers — Nylon 29.88
- Reg. 189.95—Karpen—Choice of Styles and Colors
Lounge Chairs — Foam Rubber 129.88
- Reg. 119.95—Gold or Beige
Lounge Chairs — Foam Rubber 69.88
- Reg. 99.95—Choice Colors
Contour Chairs — Plastic 79.88
- Reg. 99.95—Foam Rubber
Contour Chair — Green Nylon 79.88
- Reg. 127.00—Ethan Allen Persimmon
Wing Chair — High Back 99.88
- Reg. 115.00—Ethan Allen Persimmon
Wing Back Club Chair 89.88
- Reg. 75.00—Gold-Nutmeg Maple
Platform Rocker — Ethan Allen 59.88
- Reg. 239.95—Karpen—Tan, 1 Only
Lounge Chair — Genuine Leather 179.88
- Reg. 99.95—Plastic Upholstery, Choice of Colors
Swivel Rockers — High Back 79.88

BEDS & BEDDING

- Reg. 89.95—Sealy Button-Free Mattress, Box Spring, Steel Bed Frame, Headboard, 1 Only
Hollywood Bed — Twin Size 59.88
- Reg. 79.95—Sealy Innerspring Mattress, Box Spring, Steel Bed Frame, Headboard, 1 Only
Hollywood Bed — Twin Size 59.88
- Reg. 59.50—One Group Simmons or Sealy, Floor Samples
Mattresses — Button 33.00
- Reg. 59.50—One Group Simmons or Sealy, Floor Samples
Box Springs — Full & Twin Sizes 33.00
- Reg. 289.95—Beige Plastic with Full-Size Posturpedic Mattress, Floor Sample, 1 Only
Sealy Sleeper Sofa 219.88
- Reg. 359.95—Char Brown, Nylon Upholstery, Opens to Sleep 2 with Full-Size Innerspring Mattress, 1 Only
Mastercraft Sleeper — Modern 269.00

OCCASIONAL FURNITURE

- Reg. 205.00—Danish Styling, Walnut, Floor Sample, 1 Only
Secretary Declaration by Drexel 169.88
- Reg. 119.00—Provincetown by Dearborn, Nutmeg Fin., 1 Only
Desk — Colonial — Solid Maple 79.88
- Reg. 89.00—All Formica Top, Sides and Drawer Fronts, 1 Only
Desk — Modern Lined Oak 69.88
- Reg. 69.95—1 Only
Desk — Modern Lined Oak 49.88
- Reg. 39.95—Mahogany, Slightly Marred
End Table — Leather Top 24.88
- Reg. 39.95—Mahogany, Slightly Marred
Lamp Table — Leather Top 24.88

2 PC. MODERN SECTIONAL SOFA

- Reg. 119.95
79⁸⁸
- Light Blue Plastic
 - Slightly Damaged

2 PC. MODERN MASTERCRAFT Living Room SUITE

- Reg. 229.00
169
- Foam Cushioned — Nylon Upholstery — Choice Beige or Brown — Lifetime Construction

2 PC. MODERN SECTIONAL SOFA INTERNATIONAL

- Reg. 299.00
219⁸⁸
- Foam Cushioned Brown Nylon Thin Line Styling

2 PC. ETHAN ALLEN SECTIONAL SOFA

- Reg. 209.00
159⁸⁸
- Brown & Gold Plaid Reversible Seat & Back Cushions — Nutmeg Maple

SAMPLE DRAPES

- 50% OFF**
- Single Pairs 90" Length
 - Choice of Patterns
 - Only 1 Pair of a Pattern

DISCONTINUED DRAPERY SAMPLES

- Values To 3.90
89^c
- Big 36 x 48" Samples One of a Kind — Make Ideal Sofa Pillow Covers

MODERN COCKTAIL TABLES

- Values To 29.95
4⁸⁸
- Blonde — Choice Styles — Damaged

BEDROOM

- Reg. 199.95—Walnut Panel Bed, Double Dresser, Mirror, Chest
4-Pc. Bedroom — Danish Modern 159.88
- Reg. 219.95—Double Dresser & Mirror, Chest, Bookcase Bed
3-Pc. Bedroom — Modern Walnut 179.88
- Reg. 299.95—Kroehler—Double Dresser & Mirror, Chest, Bookcase Bed
3-Pc. Bedroom — Modern Walnut 219.88
- Reg. 269.95—Lined Oak—Kroehler, Double Dresser & Mirror, Chest, Bookcase Headboard & Frame
3-Pc. Bedroom — Modern 219.88
- Reg. 299.95—Mahogany, Van Dyke Brown, Double Dresser & Mirror, Chest, Panel Bed
3-Pc. Bedroom — Italian Prov. 239.88
- Reg. 409.95—Cherry, French Walnut Finish, Triple Dresser, Mirror, Chest, Panel Bed
4-Pc. Bedroom — French Prov. 319.88
- Reg. 229.95—Walnut, Double Dresser, Mirror, Chest, Panel Bed
3-Pc. Bedroom — Danish Modern 189.88
- Reg. 299.95—Mahogany, Double Dresser, Framed Mirror, Chest, Panel Bed
4-Pc. Bedroom — 18th Century 229.88
- Reg. 268.95—Nancy Revere Collection, Double Dresser, Mirror, Chest on Chest, Panel Bed
4-Pc. Bedroom Suite — Colonial 219.88
- Reg. 208.95—Nancy Revere Collection, Triple Dresser, Big Framed Mirror, Bookcase Bed
3-Pc. Bedroom Suite — Colonial 179.88
- Reg. 253.00—Sable Brown, 75" Long, 9-Drawer, 1 Only
Triple Dresser — Drexel Triune 199.88

APPLIANCES

- Reg. 369.95—Deluxe Automatic, Push-Button Controls, Big Oven, Broil Under Glass
30" Philco Electric Range 269.88 W/Trade
- Reg. 249.95—Automatic with Pull-Out Units, 1001-Heat Controls, Big Oven
30" Westinghouse Electric Range 199.88 W/Trade
- Reg. 119.95—With Deluxe Wringer, All Porcelain Finish
Maytag Wringer Washer 98.88
- Reg. 249.95—Westinghouse, Heavy Duty, Front Loading, 1 Only
Laundromat Automatic Washer 149.88 W/Trade
- Reg. 249.95—Westinghouse with 4 Heat Settings, Automatic Dry Dial, 1 Only
Automatic Electric Dryer 159.88 W/Trade
- Reg. 399.95—Westinghouse Deluxe with 8 Program Computer Controls, Soap & Water Saver, 2 Only
Laundromat Automatic Washers 219.88 W/Trade
- Reg. 839.90—Westinghouse L1000 Pair, Deluxe with Program Computer Controls, Push-Button, Only 1 Pair
Laundromat Washer & Dryer 488.88 W/Trade
- Reg. 269.95—With Dairy Bar in Door, Cross-Top Freezer, Big Crisper
Philco 12 Cu. Ft. Refrigerator 169.88 W/Trade
- Reg. 339.95—Westinghouse with Big Freezer, Dairy Bar in Door, Twin Crisps
13 Cu. Ft. Refrigerator 239.88 W/Trade
- Reg. 129.95—Westinghouse, Glass Lined
52-Gal. Hot Water Heaters 89.88

EVERYTHING IN THE STORE REDUCED EXCEPT A FEW FAIR TRADED ITEMS



UP TO 36 MONTHS TO PAY

FREE DELIVERY IN U.P.

SPECIAL ONE GROUP PICTURES 50% OFF ASSORTED SIZES & SUBJECTS

SPECIALS
CANDY DISHES - GLASS ... 2 For 25c CHOICE OF SHAPES
7-PIECE FIRE KING OVENWARE SET ... \$1.49 CASSEROLE & COVER - 9" PIE PLATE 4 & 6 OZ. DESSERT DISHES
COLONIAL MILK STOOLS ... \$3.49 Ea.

329 W. WASH. ST. CA 6-9956 MARQUETTE

The Price is Right!

39¢ MEAT

SALE



Prices In This Ad Effective Thru SATURDAY, JULY 13th



Fresh, Lean

GROUND BEEF

39¢ lb.

America's most versatile meat . . . top quality ground beef! Made from tender, lean beef, red and juicy, full of flavor . . . ground fresh right in our store several times daily. Get this hearty ground beef at terrific savings NOW!

Ideal for Barbecuing Frozen Young Hen

TURKEYS

8-10 LB. AVERAGE 39¢ lb.

GOV'T. INSPECTED

- Tender, Savory **Beef Liver 39¢ lb**
- For Summertime Snacks **Braunschweiger 39¢ lb**
- Brand Name **Sliced Bacon 39¢ lb**
- Oscar Mayer **Cotto Salami 39¢**

- By the Piece **Chunk Bologna 39¢ lb**
- Armour's **Wieners 1-lb. 39¢ pkg.**
- Country Style **Pork Sausage 39¢ lb**
- Armour's Treat **Luncheon Meat 12-Oz Tin 39¢**



CRISP FRESH HEAD

LETTUCE

2 For 29¢

WISCONSIN GROWN

WASH. STATE BING **CHERRIES 49¢ lb.**

HOME GROWN **GREEN ONIONS 3 Bunches 19¢**

GOOD VALU **TOMATOES 29 Oz. Can 4 For 89¢**

PETER PIPER **SALAD MUSTARD 34 Oz. Jar 19¢**

SWEET TREAT **CRUSHED PINEAPPLE 5 300 Size \$1**

FLAV-O-RITE **Cheese Pops YOUR CHOICE 39¢**
Caramel Corn
Popped Pop Corn

Heinz Assorted **Strained Baby Foods 6 FOR 59¢**

HAWAIIAN PUNCH 46 Oz. Can 3 FOR \$1

WAGNER'S **Concentrated ORANGE and GRAPE DRINK 6 oz. can 6 FOR 99¢**

GRADE "A" **SMALL EGGS 3 Doz. 89¢**
 MARIO IMPORTED SPANISH-DECORATED GLASS TUMBLER
STUFFED OLIVES 5 3-4 oz. Glass 39¢

Maxwell House Coffee

New Convenient Can with Plastic Cover

SPECIAL LOW PRICE! 3 Lb. Tin \$1.59

DRIP or REGULAR GRIND

Please Limit

Men's Short Sleeve **KNIT SPORT SHIRTS \$2.49 EACH**

BURRY'S—REGULAR 39¢ **Assorted Cookies 3 FOR 1.00**

MA BROWN—REGULAR 69¢ **Straw. Preserves 2 Lb. Jar 59¢**

CREAMY WHIP **Marshmallows 6 Oz. Bag 10¢**

REGULAR 49¢ VALUE **Spam 12 Oz. Can 2 FOR 89¢**

SUPER VALU **Saltines 1 Lb. Pkg. 2 FOR 49¢**

HAPPY HOST—YELLOW **Cling Peaches 29 Oz. Can 4 FOR \$1**

Our Best Measure is Customer Pleasure!



Have You Tried Super Valu Frozen . . .

ORANGE JUICE 4 6 oz. cans \$1

"POUR & STORE" FROZEN **VEGETABLES 1 1/2 Lb. Bag 29¢**

BONNIE MAE—BUTTERMILK **BISCUITS 3 8 Oz. Tubes 25¢**

SWEET TOOTH—CHERRY & APPLE **PIE FILLING 4 For \$1**

SAVE as you spend...with

GOLD BOND stamps!

EXTRA RICH **PRELL LIQUID SHAMPOO**

Reg. Value \$1.00 **75¢**

7 Fl. Ozs. SAVE 25¢

NEW WOODBURY **Dream Curl & Set HAIR LOTION**

Reg. Value \$1.50 **1.09**

10 Fl. Ozs. Plus Tax SAVE 41¢



200 EXTRA STAMPS FREE

WITH THESE COUPONS & PURCHASES

Coupon
50 EXTRA S&H STAMPS
 With Purchase of 4 Cans Coastal Lemonade (Reg. 2/25c)
 VALID THRU SAT., JULY 13
 RED OWL, MARQUETTE

Coupon
50 EXTRA S&H STAMPS
 With Purchase of 100 Ct. Pkg. Paper Plates (9" Size) Reg. 89c
 VALID THRU SAT., JULY 13
 RED OWL, MARQUETTE

Coupon
50 EXTRA S&H STAMPS
 With Purchase of 2 Lb. Harvset Queen Coffee (Reg. \$1.15)
 VALID THRU SAT., JULY 13
 RED OWL, MARQUETTE

Coupon
100 EXTRA S&H STAMPS
 With \$10.00 Purchase or More (Except Cigarettes)
 VALID THRU SAT., JULY 13
 RED OWL, MARQUETTE



RED OWL'S
USDA CHOICE
STEAK
SALE!

RED OWL'S TAIL-LESS T-BONE
Since our steaks can neither swim nor fly, we've taken off those silly "tails". Excess bone and fat on the T-Bone and Porterhouse steaks have been removed before weighing to give you more meat for your money. OK?

GR. 1 & 2 7-13



"Great for Barbecue!"



U. S. CHOICE—RED OWL INSURED BEEF
ROUND OR SWISS STEAK
 lb. **69¢**
 Boneless Round Steak lb. 79¢

U. S. CHOICE—RED OWL INSURED BEEF
SIRLOIN STEAK
 lb. **89¢**

U. S. CHOICE—RED OWL INSURED BEEF
T-BONE OR CLUB STEAK
 lb. **99¢**

U. S. CHOICE BEEF
BONELESS ROAST lb. **89¢**
 Rump or Round

SMOKED CENTER CUT PORK CHOPS LB. **59¢**
 A NEW TASTE TREAT—EXCELLENT FOR OUTDOOR GRILLING!
 WILSON CERTIFIED—BY THE CHUNK—ALL MEAT
Large Bologna LB. **39¢**
 OSCAR MAYER ASSORTED—CHOICE OF 6 VARIETIES
Luncheon Meats 7-OZ. PKG. & UP **29¢**

Enjoy a new taste thrill!
 The SWEETEST... MOST FLAVORFUL... Georgia...
PEACHES 3 lbs. **49¢**

Rich, Juicy Red
PLUMS 3 lbs. **59¢**

HAWAIIAN PUNCH OR DRINK
 3 46-OZ. CANS **\$1.00**

DEL MONTE PINEAPPLE-GRAPEFRUIT
Peaches 3 30-OZ. CANS **89¢**

TONY'S SAUSAGE PIZZA 20-OZ. PKG. **69¢**

SANA WHIPPING CREAM 8-OZ. TIN **29¢**

Grocery Values

MIDGET COLBY LONGHORN KRAFT CHEESE LB. **59¢**

DEL MONTE FRUIT COCKTAIL 4 17-OZ. CANS **95¢**

CHARMIN, BATHROOM—WHITE OR ASSORTED COLORS TISSUE 12 ROLLS **\$1.00**

RED OWL—CHUNK STYLE TUNA FISH 3 9 1/2-OZ. CANS **\$1.00**

RED OWL STRAWBERRY PURE PRESERVES 12-OZ. JAR **29¢**

TERRIFIC FOR ANY MEAL SPAM LUNCHEON MEAT 12-OZ. CAN **43¢**

RED OWL (20¢ OFF) INSTANT COFFEE 6-OZ. JAR **69¢**

SANDWICH-STYLE—VANILLA OR ASSORTED FIESTA COOKIES 2-LB. PKG. **39¢**

RED OWL—TWIN PACK POTATO CHIPS 1-LB. BOX **49¢**

RED OWL GRAHAM CRACKERS 1-LB. PKG. **29¢**

RED OWL CAKE MIX ANGEL FOOD 17-OZ. PKG. **39¢**

RECIPE BOOK MATCHES BOX OF 50 PKGS. **9¢**

BAKERY DEPARTMENT

RED OWL WHITE BREAD 1 1/2 LB. LOAF **27¢**

RED OWL HAMBURGER OR HOT DOG BUNS PKG. OF 8 **25¢**

Red Owl Frozen—Beef, Chicken, Turkey MEAT PIES 6 8-OZ. PKGS. **\$1.00**

Red Owl Frozen—All except asparagus VEGETABLES 6 8-OZ. PKGS. & UP **\$1.00**

RED OWL—STEWED TOMATOES 6 16-OZ. CANS **\$1.00**

SLICED GEISHA PINEAPPLE 4 20-OZ. CANS **\$1.00**

RED OWL WHO GIVES A HOOT ABOUT YOU?... RED OWL THAT'S WHO-O-O!



Hoffman Joins U.S. Weather Bureau Here

Earl N. Hoffman, 50, was transferred recently to the Marquette weather bureau station from Devil's Lake, N. D., where he had been stationed for the past 17 years.

Hoffman, a native of Detroit, graduated from the Cass Technical High School there and from the University of Michigan in Ann Arbor. In addition, he attended the Universities of North Dakota, Pennsylvania and Oregon while on his different assignments throughout the United States.

With Bureau Since 1937

In 1937 Hoffman took his first job with the weather bureau in Detroit. He has been stationed at Grand Rapids, St. Cloud, Minn., Williston, N. D., and Devil's Lake, N.D., before being transferred to Marquette.

Hoffman, with his wife and three children, are residing temporarily at the Birchmont Cabins on U.S. 41 until permanent residency can be obtained. The Hoffmans have two other children besides those at home; one is married and the other is attending college.

Tech Received \$1,209,000 From Donors

HOUGHTON — Michigan Tech received \$1,209,000 in gifts, grants, endowments and bequests during the 1962-63 fiscal year which ended June 30. Forty per cent of this amount came from research grants.

"Income of this type is very important to Michigan Tech," says Dr. E. T. Williams, vice president of the college. "It makes possible special programs which are not financed by legislative appropriations."

121 Research Areas

"Substantial grants received from government agencies and from broad segments of American industry reflect awareness of Tech's national stature," he said. "We appreciate this expression of confidence by government, business and industry."

Research grants accounted for \$488,700 of the total. These were provided by federal and state governmental agencies and business firms for specific research projects on a contractual basis. Research at Michigan Tech has grown 25 per cent in a year, with work under way in 121 different areas of study.

Major research grants this year included \$12,370 from the Agency for International Development to Tech's Institute of Mineral Research for technical assistance in foreign iron ore research, \$27,000 from the American Iron and Steel Institute, \$26,500 from the Atomic Energy Commission and \$65,000 from the National Cooperative Highway Research Program.

Grants for special programs sponsored by the National Science Foundation, the Manpower Development Training Act and the Area Redevelopment Administration totaled \$335,820.

Alberta Laboratory Program

Special programs included two National Science Foundation institutes on use of computers, one on earth sciences and one on the geology of the Lake Superior region. A summer laboratory program is also being conducted at Tech's Ford Forestry Center at Alberta.

Tech received a \$110,000 grant to train engineer aides in surveying. This is the first program of its kind in the nation and will run for 47 weeks. Other manpower training grants included \$39,000 for training lumber graders in a 16-week program at the forestry center and \$31,000 to train employees for Northboard, Inc., a new particle board plant established at Caspian as a result of Michigan Tech research.

Senators Will Intervene In Scholle Suit

DETROIT (AP) — Three Republican State Senators filed notice in U.S. District Court here Wednesday that they will intervene in Michigan AFL-CIO President August Scholle's suit aimed at blocking legislative apportionment under the formula prescribed in the new state Constitution.

Sens. Frank D. Beadle of St. Clair, Paul C. Younger of Lansing and John W. Fitzgerald of Grand Ledge opposed Scholle earlier when he challenged the makeup of the state Senate in a suit filed in the Michigan Supreme Court.

Decision Blocked

Scholle won the suit, but the Michigan high court's decision was blocked from taking effect by a U.S. Supreme Court order obtained by Beadle, Younger and Fitzgerald.

The new constitution's approval by the voters last spring made Scholle's first suit a moot question.

The union chief's latest court action seeks to prevent apportionment because, Scholle charges, the formula in the new constitution is discriminatory.

Defendant

Secretary of State James M. Hare is named as defendant in Scholle's suit because of his status as chief elections officer for the state.

NORTHLAND FOOD STORES



"NEW" CIRCLE S SLICED BACON
The Finest Flavor You Have Ever Tasted! Try Some Today!

1 1/2 Lb. Pkg. **89c**

PREMIUM SKINLESS FRANKS 1 1/2 Lb. Bag **79c**

SWIFT'S FRESH Pork Steak . . . Lb. **49c** FRESH CREAMERY BUTTER . . . Lb. **59c**

SWIFT'S PREMIUM Round Steak Lb. **79c**

"You Just Can't Find Fresher Finer Produce!"

RED SWEET JUICY GRAPES Lb. **19c**

Delightful as a Garnish for Salads or When Put Into a Dessert Plump, Juicy and Sweet in Flavor, Delicious in a Fruit Salad

FIRM SOLID GREEN HEADS OF CABBAGE . . . LB. **9c**

FLOUR	GOLD MEDAL 25 LB. BAG	\$1 89	OIL	ALL PURPOSE MAZOLA STOCK UP NOW	Gallon	\$1 95
ORANGE DRINK	WAGNER'S FRESH	Qt. 43c	COFFEE	CHASE & SANBORN	2 Lb. Tin	\$1 29
LEMON JUICE	REALEMON	16 Oz. Btl. 43c	SEASONING	DURKEE'S BARBECUE	3 1/2 Oz. Can	29c
APRICOTS	MA PERKINS WHOLE	4 29 Oz. Cans 99c	MAYONNAISE	HELLMAN'S	32 Oz. Jar	75c
PEACHES	GOLDEN ORCHARD	2 29 Oz. Cans 55c	PEANUT BUTTER	SHEDD'S	24 Oz. Jar	63c
KRAUT	FRANK'S	Quart Bottle 25c	KIDNEY BEANS	JOAN OF ARC	2 15 Oz. Cans	29c
CHUNK TUNA	CHICKEN OF THE SEA	6 1/2 Can 33c	PORK 'N BEANS	OLD GRIMES	15 Oz. Can	10c
DILL PICKLES	BOND'S HAMBURGER SLICED	2 16 Oz. Jars 39c	POTATO CHIPS	RED DOT	Twin Pak	59c

SWANSDOWN
CAKE MIXES
3 Pkgs. **79c**

NORTHLAND ICE CREAM
ALL FLAVORS Full 1/2 Gallon **69c**

FROZEN FOODS

GORTON'S Fish Sticks . . . 10 Oz. Pkg. **43c**

GULF KIST Breaded Shrimp 10 Oz. Pkg. **65c**

STOKELY'S FINEST
CATSUP
6 14 Oz. Btls. **\$1**

BRACH'S CANDIES
LEMON DROPS 1 1/2 Oz. 29c
SPICETTES 16 Oz. 29c
ROYALS 1 1/2 Oz. 39c

BLUE SEAL Margarine 5 Lb. **95c**

SUPREME COOKIES
COCOANUT CHOC. DROPS
PECAN SANDIES
NUT FUDGE DROP
YOUR CHOICE Pkg. **45c**

CRISCO SHORTENING 3 Lb. Tin 82c	FLUFFO SHORTENING 3 Lb. Tin 69c	SPIC & SPAN 1 Lb. Pkg. 35c	COMET CLEANSER 2 Reg. Cans 33c	BLACK FLAG INSECT BOMB 12 Oz. Can 98c	CHEER Gt. 79c
DUZ DETERGENT Starter Size 55c	IVORY SNOW Gt. 83c	OXYDOL SOAP Gt. 83c	TIDE Gt. 79c	MR. CLEAN 28 Oz. Btl. 69c	LIQUID IVORY 22 Oz. 60c
LIQUID JOY 22 Oz. 60c	LIQUID THRILL 22 Oz. 60c	CAMAY SOAP 2 Reg. Bars 23c	IVORY SOAP 4 Bars 29c	IVORY SOAP 2 Lge. Bars 33c	ZEST SOAP 2 Reg. Bars 31c
DOWNY FABRIC SOFTENER Pt. 45c	DASH DETERGENT 3 Lb. Pkg. 79c	DREFT Lge. 35c	SALVO SOAP TABLETS 46 Oz. 79c	IVORY FLAKES Gt. 83c	PERFECT PLUS NYLONS Pr. 99c

THESE ARE YOUR LOCAL

NORTHLAND FOOD STORES

• IN MARQUETTE

Paquette's Grocery
TROWBRIDGE PARK

FLETCHER'S SUPER MARKET

HEATH'S COUNTRY STORE
SKANDIA

• FORSYTH
BROWN'S STORE

• ISHPEMING
PORTALE BROS.

Kallatsa's Market
West Ishpeming

• Eben Junction
UNITY CO-OP

• NEGAUNEE
Collins Cash Market

Tommy's Buy-Rite

RUSSO BROS.

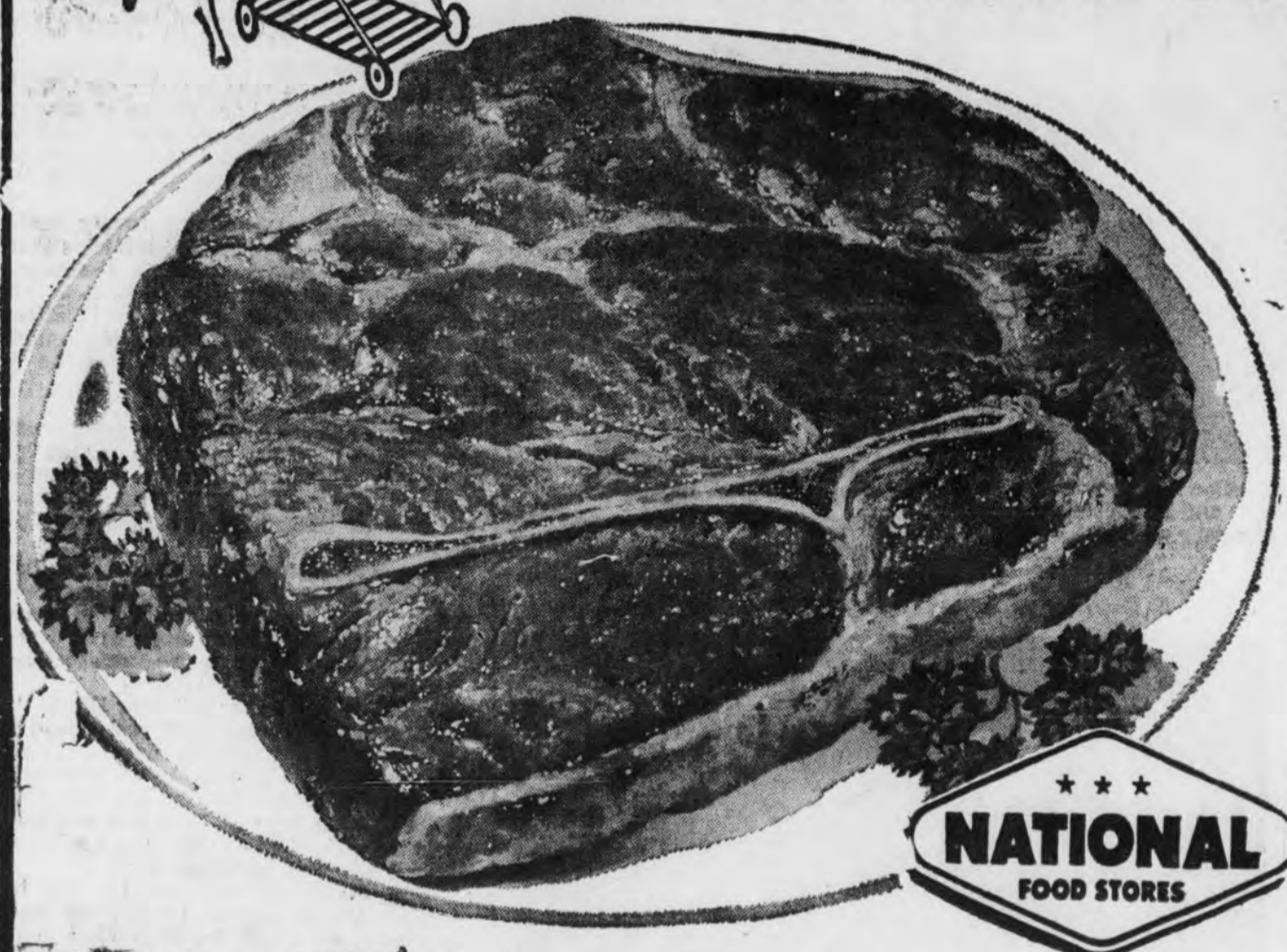
A. & J. SHELL MART
U. S. 41, NEGAUNEE

HIGH QUALITY, LOW PRICES AND EXTRA COURTESY ARE THE TRADE MARKS OF YOUR LOCAL NORTHLAND FOOD STORE.



IT'S fun TO SHOP WITH PRICES SO low

And You Get Extra Savings With GIFT HOUSE Stamps!



NATIONAL FOOD STORES

You Just Can't Beat That National Meat

CHUCK STEAK

BLADE-CUT
National's Colorado
"Corn-Fed" Beef
Cut & Trimmed
National's "Value-Way"

Lb. **39¢**

Colorado
Corn-Fed Beef
Arm Cut
SWISS STEAK
Lb. **55¢**

Boneless Chuck Roast Colorado Corn-Fed Beef Lb. **59¢**

Ground Chuck National's Colorado "Corn-Fed" Beef Lb. **59¢**

Bnls. Beef Stew National's Colorado "Corn-Fed" Beef Lb. **59¢**

Rotisserie Roast Boneless Rolled Colorado Corn-Fed Lb. **69¢**

3 1/2 to 5 Lb. Dressed
YOUNG Ducklings
Lb. **39¢**

Large Bologna Swift's All Meat Lb. 39¢
Liver Sausage Top-Taste Braunschweiger Lb. 39¢
Perch Portions er Gorton's Haddock Portions 2 11-Oz. Pkgs. 89¢
Ring Bologna Plankinton All Meat See Coupon For 25 Gift House Stamps Lb. 59¢
Slab Bacon Hickory Smoked By The Piece Lb. 35¢
Breaded Shrimp Sea-Freeze Lb. 79¢
Boiled Ham Wafer Sliced Lb. 98¢

Kraft's Regular or Smoky
Bar-B-Q-Sauce 18-Oz. Jar Only **39¢**

Everyday Low Priced!

SWIFT'S PREM LUNCHEON MEAT 12-OZ. CANS 2 for only 69¢	HUNT'S FINEST TOMATO CATSUP 14-OZ. BTLs. 6 for only \$1.00
---------------------------------------------------------------------------	--------------------------------------------------------------------------------

Tomato Sauce	Hunt's Finest 8-Oz. Can	10¢
Pork & Beans	Van Camp's Label 5 16-Oz. Cans	69¢
Cream Corn	Garden Fresh 4 16-Oz. Cans	49¢
Frank's Kraut	Delicious with Pork 4 16-Oz. Cans	49¢
Chicken Broth	College Inn Brand 3 47-Oz. Cans	\$1.00
Hi-C Drinks	Assorted Fruit Flavors 46-Oz. Can	29¢
Fruit Cocktail	Del Monte Quality 2 29-Oz. Cans	69¢
Kraft Dressing	Italian Style 8-Oz. Btl.	35¢
Top-Treat Soda	All Flavors 6 12-Oz. Btl. Pack	45¢
Black Pepper	Natco Brand 4-Oz. Tin	29¢

COUPON
REDEEM FOR...
25 GIFT HOUSE STAMPS
With the purchase of one ring of All Meat
PLANKINTON RING BOLOGNA—LB. 59¢
GOOD AT ANY NATIONAL FOOD STORE
One per Family Expires: Sat., July 13th

COUPON
REDEEM FOR...
25 GIFT HOUSE STAMPS
With the purchase of one 3-Lb. Bag 49¢
YELLOW OR WHITE ONIONS
GOOD AT ANY NATIONAL FOOD STORE
One per Family Expires: Sat., July 13th

COUPON
REDEEM FOR...
25 GIFT HOUSE STAMPS
With the purchase of one 22-Oz. Btl. 49¢
CHIFFON LIQUID DETERGENT
GOOD AT ANY NATIONAL FOOD STORE
One per Family Expires: Sat., July 13th

COUPON
REDEEM FOR...
25 GIFT HOUSE STAMPS
With the purchase of one 5-Lb. Size—25¢ Off
RINSO BLUE DETERGENT—\$1.10
GOOD AT ANY NATIONAL FOOD STORE
One per Family Expires: Sat., July 13th

CAKE MIXES
BETTY CROCKER WHITE, YELLOW, HONEY SPICE or CHOCOLATE FUDGE
2 19-Oz. Pkgs. 75¢

"National's Dawn Dew Fresh Produce" SWEET CHERRIES

Bing, The Finest Grown; Plump and Juicy
Lb. **39¢**
Sunkist ORANGES Sweet and Juicy Doz. **79¢**

Red Haven Fresh PEACHES..... 2 Lbs. for 39¢
Indian River White or Red GRAPEFRUIT..... 3 for 69¢
Winesap or Newton APPLES..... 2 Lbs. for 49¢
Plump and Juicy Seedless GRAPES..... Lb. 39¢
Zucchini or Yellow SQUASH..... Lb. 19¢
Sunkist Nippy and Tangy LEMONS..... 6 Jumbo Sizes 49¢
Great with Corned Beef CABBAGE..... Lb. 9¢
U.S. No. 1 Grade RED POTATOES..... 10 Lb. Bag 79¢

Santa Rosa PLUMS
Largest Grown Firm, Red, Juicy
4 1/2-Lb. Basket **\$1.19**
Lb. 29¢



NECTARINES
Sun Grand Golden Yellow Lb. **29¢**

NATIONAL FOOD STORES

Free • Free • Free
Redeem the two coupons that you received in the mail for this week for:
Free 14-Oz. Btl. Natco Tomato Ketchup
No Purchase Necessary (Adults Only)
50 Free Gift House Stamps
No Purchase Necessary (Adults Only)
Also Check Your National Food Meline Coupons for this Week

NATIONAL'S OWN...TOP-TASTE...
BUTTERMILK BREAD | **HALF RYE BREAD**
Mix 'Em or Match 'Em 2 1 1/2-Lb. Loaves **49¢** Regular 29¢ Each, Buy Two Save 9¢

MAZOLA Corn Oil For all your salads Gal. \$7.29 Only **2**
NBC SALTINES 1-Lb. Box **29¢**

WALDORF Bathroom Tissue White or Colored 3 4-Pk. \$1.00 Pkgs.
REAL GOLD Orange Base 2 6-Oz. Cans 39¢ 12-Oz. Cans 35¢

WYANDOTTE Select Pitted RIPE OLIVES 5 1/2-Oz. Can **29¢**
TOP TASTE APPLE BUTTER 73-Oz. Jar **69¢**

TOP-TASTE SALAD DRESSING 32-Oz. Jar **49¢**
ALL FLAVORS KOOL-AID 6 1 1/4-Oz. Pkgs. **25¢**

Fresh Dairy Foods!
Wunderbar Cheese Delicious with Crackers Lb. **65¢**
Pillsbury Biscuits Sweetmilk or Buttermilk 3 8-Oz. Pkgs. **25¢**
Cheez-Whiz Kraft Creamy Smooth 14-Oz. Jar **49¢**
Large Eggs "So-Fresh" Grade "A" Doz. Only **45¢**



Excluding fair trade and minimum mark-up items



Super-Right Skinless Wieners

2 Lb. Pkg. 89¢

Juicy—All Meat Wieners



Pound Pkg. 49¢

Super-Right Boneless Beef Roast Arm or Chuck Lb. 69¢

Ketchup Ann Page 2 14-Oz. Btls. 33¢
Mustard Ann Page 6-Oz. Jar 10¢
Stuffed Olives 10 1/2-Oz. Jar 69¢

Don't Forget These Favorites!
Marcal Sandwich Bags 2 100 in Pkg. 45¢
Ann Page Hot Dog Relish 8-Oz. Jar 19¢
Pert Napkins White Paper Napkins 200 in Pkg. 25¢



Come See, You'll Save at A & P!

A&P Corn Golden Cream Style 2 17-Oz. Cans 29¢
A&P Corn Golden Whole Kernel 2 17-Oz. Cans 29¢
Iona Corn Golden Cream Style 2 17-Oz. Cans 25¢
Potatoes A&P Whole or Sliced 2 16-Oz. Cans 25¢
Iona Beans Cut Green 2 15 1/2-Oz. Cans 29¢
Tomato Juice A&P Brand 2 46-Oz. Cans 55¢
Tomatoes Sultana Brand 2 16-Oz. Cans 35¢
Prune Plums Sultana Brand 4 30-Oz. Cans \$1
Fruit Cocktail Sultana Brand 3 30-Oz. Cans \$1
A&P Grape Juice 3 24-Oz. Btls. \$1
Iona Pears Bartlett Halves 3 30-Oz. Cans \$1
Sultana Tuna Flakes 5 6-Oz. Cans \$1

Flavorful and Juicy
Super-Right Beef Cube Steaks
89¢ Lb.
Ground Chuck or Beef Stew, Lb. 69¢

Serve Eggs With Your Bacon!
Allgood Brand Sliced Bacon
95¢ 2 Lb. Pkg.
Super-Right Thick Slice Bacon 2 Lb. Pkg. 99¢

Lowest Price in Years!
Medium Size — 31 to 42 Count
Frozen Shrimp
69¢ Lb.
Save Even More on the 5-Lb. Box for \$3.39

Super-Right Quality
Chuck Steaks
39¢ Lb.
Round Bone Arm Steak, Lb. 55¢

Bisquick 40-Oz. Pkg., 49¢ 60-Oz. Pkg. 69¢
Diet Delight Yellow Cling Peaches 16-Oz. Can 29¢
Star-Kist Tuna 6 1/2-Oz. 35¢ 9 1/4-Oz. Can 49¢
Crisco Vegetable Shortening Lb., 33¢ 3 Lb. Can 81¢
Breeze 38-Oz. Pkg. 83¢ 66-Oz. Pkg. \$1.39
Rinso Blue 5¢ Off, Reg. 35¢ 54-Oz. Pkg. 69¢
"all" Condensed 49-Oz., 79¢; 10-Lbs., \$2.29 20-Lb. Pkg. \$4.59
Lux Liquid 22-Oz., 60¢ 32-Oz. Can 87¢
Swan Liquid Detergent 12-Oz., 35¢; 22-Oz., 60¢ 32-Oz. Can 86¢
Tide 20-Oz., 31¢ 46-Oz., 79¢ 83-Oz. Pkg. \$1.35 16-Lb. Pkg. \$3.95
Cheer 21 1/2-Oz., 35¢ 53 1/2-Oz., 79¢ 91-Oz. Pkg. \$1.35
Oxydol 19-Oz., 37¢ 46-Oz., 83¢ 5-Lb., \$1.39 3 3/4-Oz. Pkg.
Salvo Tablets 46-Oz. Pkg., 79¢ 138-Oz. Pkg. \$2.29
Ivory Liquid 12-Oz., 37¢ 32-Oz. Can 87¢
Joy 12-Oz., 37¢ 32-Oz. Can 87¢
Comet Cleanser 2-14-Oz., 33¢ 2-21 1/2-Oz., 49¢ 4 6 1/2-Oz. Cans 39¢
Instant Fels Granules 5 1/2-Oz. Pkg. 79¢ 5 1/2-Lb. Pkg. \$1.32

Golden
Ripe Bananas 2 LBS. 29¢
Dark Bing Cherries Lb. 39¢
Seedless Grapes Thompson Sweet—Green Lb. 39¢
Souther Grown
Peaches 2 LBS. 29¢

Red Star Foil Wrap Yeast 2 2 1/2-Oz. Pkgs. 13¢
Longhorn Cheese Lb. 55¢
Butter Silverbrook Grade B Lb. 64¢
Ched-O-Bit Processed Cheese Spread 2 Lb. Pkg. 69¢
Spanish Bar Iced & Spiced Cake—Reg. 43¢ Ea. 29¢
Cherry Pie Jane Parker Reg. 49¢ Ea. 39¢
Bread Buttermilk Jane Parker 2 1 1/2-Lb. Loaves 49¢

50 STAMPS
Jane Parker Applesauce Loaf Each 45¢
Redeem at A&P, Expires July 13, 1963

50 STAMPS
Jane Parker Iced Crunch Whirls Each 45¢
Redeem at A&P, Expires July 13, 1963

50 STAMPS
Sultana Cocoa 1-Lb. 55¢
Redeem at A&P, Expires July 13, 1963

50 STAMPS
Ann Page Blended Syrup 24-Oz. Bil. 55¢
Redeem at A&P, Expires July 13, 1963

50 STAMPS
A&P Rindless Cheddar Cheese 1-Lb. 79¢
Redeem at A&P, Expires July 13, 1963

50 STAMPS
Eight O'Clock Coffee 3-Lb. \$1.59
Redeem at A&P, Expires July 13, 1963

50 STAMPS
Colgate Tooth Paste 5-Oz. Tube 69¢
Redeem at A&P, Expires July 13, 1963

50 STAMPS
Super-Right Pork Sausage Roll 2-Lb. 85¢
Redeem at A&P, Expires July 13, 1963

50 STAMPS
10 Lbs. POTATOES U.S. No. 1
Redeem at A&P, Expires July 13, 1963

ENJOY COFFEE MILL FLAVOR
FRESH-GROUND FLAVOR... YOU CAN'T GET IN A CAN
Mild and Mellow 1-Lb. BAG 55¢ 3-Lb. BAG \$1.59
Vigorous and Winy
RED CIRCLE 1-Lb. BAG 59¢ 3 LB. \$1.71
BOKAR 1-Lb. BAG 61¢ 3 BAG \$1.77

ANN PAGE PROVES Fine Foods Needn't Be Expensive!
ANN PAGE REALLY FINE
Mayonnaise
QUART JAR 49¢

THE GREAT ATLANTIC & PACIFIC TEA COMPANY, INC.
A&P Super Markets
AMERICA'S DEPENDABLE FOOD MERCHANT SINCE 1859
All Prices Effective Through July 13th

ALL PRICES the SAME at — MARQUETTE — ISHPERING — NEGAUNEE

Sundine - Hyry



(Photo by Homburg)

NEGAUNEE — Marriage vows were exchanged Saturday afternoon in St. John's Episcopal Church by Caryl Sundine, daughter of Mr. and Mrs. Albert E. Sundine, and William A. Hyry, son of Mr. and Mrs. William A. Hyry. The Rev. Judson I. Mather performed the ceremony at two o'clock.

White gladioli decorated the altar for the wedding, during which Mrs. Norman Stanaway Jr. sang "The Lord's Prayer" and "Oh Perfect Love." Organist was R. Lewis Robinson of Marquette.

The bride, who was given in marriage by her father, wore a floor-length gown of silk organza. The princess-style bodice featured a scalloped scoop neckline and tiny sleeves of rosepoint lace appliques highlighted by pearls and crystals, and appliqued lace adorned the front of the bell-shaped skirt which also featured in back a flat bow and a panel extending into a chapel train. She wore a bouffant veil of French illusion attached to a circlet of organza petals and pearls, and carried a cascade bouquet of sweetheart roses and feathered carnations.

Two Attendants Mrs. Ralph Doto was matron of honor and Miss Jean Swanson, Marquette, was bridesmaid. Paula Paris, cousin of the groom, was flower girl. Wayne Jarvi of Lakewood, O., was best man and Rodney Bessolo, Milwaukee, was groomsman. Seated at the table were Mrs. Allen Ahola, the groom's brother-in-law, and Albert J. Sundine, brother of the bride.

The bridal aides wore identical dresses of blue silk organza with fitted bodices, scoop necklines, tiny sleeves and bouffant skirts of silk cutwork accented with a scalloped hemline. Their headpieces and veils were in a matching blue and they carried colonial bouquets of pink sweetheart roses and pink and white daisies. Little Miss Paris wore a yellow and white silk organza dress and her headband and bouquet were yellow and white daisies. Mrs. Sundine attended her daughter's wedding wearing a blue

Committees For Williams' Play Named

Several committees in charge of pre-opening arrangements for "Summer and Smoke," the Tennessee Williams drama of the Deep South which the Marquette Community Theater is producing next week, were announced today by Ronald Garceau, president of the theater unit.

The list follows: Publicity — Ronald Garceau, Margaret Nesbitt, Allene Westnedge, Karla Jackson, Bob Wester, Gretchen Lutey, Howard Treado Jr. and Maxine Nelson.

Props — Karen Dahlke, Ellen Clement, Marge Mahowald, Michael McMahon, Maxine Nelson and Cass Dagenais.

Make-Up—Cass Dagenais, Sharon Klaus, and Mary Ellen McGuire.

Stage Crew — Mike McMahon, Larry Klaus, David Paull, Edward Quinell, Dr. Donald Hurst, William Helfer and William Lasich.

Tickets — James Lirette, Vivian Lasich, Frances Grawn and John Cloutier.

Box office — Daphne Treado and Prudence Mills.

Costumes — Anita E. Meyland, Verna Ducas, Cass Dagenais, Gretchen Lutey, Lee Beecher, Ellen Clement, Prudence Mills and Sharon Klaus.

Program — Allene Westnedge and Mary Reynolds.

"Summer and Smoke" will open a three-night run Tuesday at Gravaert High School's Kaufman Auditorium. Curtain time for the production which is under the direction of Vance Paul, is 8:15.

Engaged



Dr. and Mrs. John S. Richardson of East Lansing, who will appear in a concert at Northern Michigan University tomorrow morning, are shown above in a recent photo. The couple has performed in several cities in the Midwest.

Pianists Appearing At Kaye Hall In Concert Tomorrow

Dr. and Mrs. John Richardson, two of the foremost pianists in the Midwest, will present a duet recital at Northern Michigan University tomorrow.

The public is invited to attend the recital which will begin at 11 a. m. in Kaye Auditorium. There will be no admission charge. The Richardsons, who will intersperse their seldom-heard four-hand music with descriptive comments, became a musical duet in the early 1950's.

Widely known for their point interpretations in Chicago, Detroit and other Midwest cities, the Richardsons studied abroad with famous European teachers including Walter Gieseking and Denise Lassimonne.

An associate professor of music at Michigan State University, Dr. Richardson, a graduate of the New England Conservatory and Yale University, has made numerous appearances in the United States and England.

His wife, Florence Efty Richardson, studied at the University of Michigan, Olivet College and Northwestern University.

Ishpeming Native Soloist For Suomi Choir's Tour

Mrs. Oliver E. Hanninen of Ann Arbor arrived in Ishpeming today for a brief visit with her parents, Mr. and Mrs. Thomas Hampton, prior to leaving on a four-week European concert tour with the Suomi College Choir of Hancock.

Mrs. Hanninen will be soloist with the widely-known choral group, which will present concerts in West Berlin, in various cities of Finland and in Stockholm, Sweden.

A 1942 graduate of Ishpeming High School, Mrs. Hanninen — the former Grace Hampton — studied music at Suomi College and completed work for her bachelor of music and master of music degrees at the University of Michigan.

She has been soprano soloist on more than 300 broadcasts of the University of Michigan "Hymns of Faith" radio program beamed over WJR Detroit and WGY, Schenectady, N. Y.

The mother of two daughters, Suzanne, 7, and Kim, 5, Mrs. Hanninen is the professional soloist of the First Baptist Church in Ann Arbor and has been heard as a recitalist and oratorio soloist throughout the Midwest.

Tomorrow she will be joined by her husband, a magazine editor for Prakken Publications, Inc., Ann Arbor, along with Mr. and Mrs. Robert Pratt, also of Ann Arbor. Pratt, chairman of the music department of Ann Arbor High School, will serve as assistant director of the Suomi Choir on its European tour.

Singing For Kekkonen In Finland, the choir is scheduled to sing a private concert for President Urho Kekkonen at his summer palace in Naantaali in southeast Finland. In addition to its regular tour, which will take it as far north as the Arctic Circle to Rovaniemi, the choir will perform twice at the fourth World Assembly of the Lutheran World Federation being held in Helsinki the last part of July and the beginning of August.

The tour begins officially when the choir leaves Chicago's O'Hare Airport on July 17 aboard a Trans-World Airline jet on the first leg of its trip — to New York City

Queen Entry Deadline For Fair Aug. 3

The deadline is approaching for candidates to enter the Upper Peninsula State Fair queen contest, whose winner will not only have the title of "Fairness of the Fair" but will also represent Northern Michigan at the State Fair in Detroit.

The registration deadline is Aug. 3, a few days in advance of the Fair, Aug. 13-18.

Mrs. Mae Carlson of 610 S. 16th St., Escanaba, is director of the queen's contest and sponsors are to communicate with her in registering their queen candidates.

County Entries Sought "It is my hope and that of the fair board that each county of the Upper Peninsula will be represented in the queen's contest," said Mrs. Carlson. "Besides reigning at the U. P. State Fair, the winner will receive a trip by plane to Detroit where she will be a guest at the Michigan State Fair."

Queen's Day is Wednesday, Aug. 14; the winner will be crowned at the evening performance of the grandstand show. Last year's queen was Miss Nancy Johnson of Manistique.

To be eligible to enter as a contestant, a girl must be single, and between 16 and 22 years of age. She must be sponsored by a local civic group, such as the Chamber of Commerce or a service club, and have been selected as a queen in her own community.

Winter queens, homecoming queens, Fourth of July queens — these and others need only an official sponsor to compete in the U. P. State Fair queen's contest, but they must be registered by Aug. 3.

Births

BARTOW — A son, Roger Eugene, was born July 9 at the 56th USAF Hospital, K. I. Sawyer Air Force Base, to Capt. and Mrs. Robert E. Bartow, 240 Explorer St., Sawyer.

GRONSDAHL — Brenda Marie is the name of the daughter born July 9 at the 56th USAF Hospital, K. I. Sawyer Air Force Base, to Airman 1-c and Mrs. Gale A. Gronsdahl, Box 275, Forsyth.

GRAWN — Mr. and Mrs. George Grawn, 322 E. Ridge St., are the parents of a son, Michael James, born July 9 at St. Mary's Hospital.

BAKER — Airman 1-c and Mrs. John Baker, Box 44, Little Lake, are the parents of a daughter, born July 9 at Francis A. Bell Memorial Hospital, Ishpeming.

WATERS — Regina Marie is the name of the daughter born July 9 at Francis A. Bell Memorial Hospital, Ishpeming, to Mr. and Mrs. Reginald Waters, 524 Poplar St., Ishpeming.

MARINCEL — A son, Kenneth Jerome, was born July 9 at Francis A. Bell Memorial Hospital, Ishpeming, to Mr. and Mrs. Joseph



(Photo by Maki Studio)

NORTH LAKE — St. Pius X Church was the scene of the Fourth of July wedding of Ramona Faye Servant, daughter of Mr. and Mrs. Lawrence Servant of Champion, and Clifford Paul LaCrosse, son of Mr. and Mrs. Edward LaCrosse, also of Champion.

White and pink peonies adorned the high altar of the church for the ceremony, performed at 9 a. m. by the Very Rev. Msgr. Edmund C. Szoka, also celebrant of the Nuptial High Mass. The bride was given in marriage by her father.

Faith Servant was the bride's only attendant and Robert LaCrosse was best man. Ushers were Edward Servant and Raymond Oullette.

Floor-Length Gown The bride's wedding gown of lace and taffeta was styled with Sabrina neckline, long sleeves and bouffant skirt highlighted by ruffled tiers in back. Her veil of illusion was attached to a pearl-trimmed tiara and she carried a bouquet of white carnations and pink roses.

The bridesmaid wore a pink dress with lace jacket and matching headpiece. She carried a bouquet of summer flowers.

A wedding breakfast was served at the LaCrosse home and the dinner was at Mt. Shasta Lodge. A reception for 300 guests was held in the evening at the Rendezvous.

The new Mrs. LaCrosse is a graduate of Ishpeming High School and has been employed at Dubinsky's Store. The groom, a Champion High School graduate, is employed as a steel worker.

The couple will reside in Champion.

SUMMER CLEARANCE NOW IN PROGRESS Open Thurs. 'Til 9 P.M. GOLDIES' OF ISHPEMING

This Week - Cooking In Hot Weather

BY INGRID BARTELLI Consumer Marketing Information Agent, Michigan State University To keep her crew cool and comfortable is mom's challenge during the hot summer weather. This wouldn't be too difficult if all we had to do was to lounge in the shade but this is not so. There's work to be done! Farmers are busy with haying and garden work. Harvesting of the berry crop is keeping some farmers more than busy. City folk have their jobs or else they're working harder than ever "taking a vacation." Even the kids in this pre-planned, organized world of ours, haven't a moment to call their own. So the job of keeping the crew cool and comfortable becomes a real challenge to mother.

Hot weather isn't conducive to cooking, yet the family must still get what they need to eat. It's pretty easy to forget about meals and just resort to lurching in the summer. This wouldn't be too bad if some intelligence were used in planning the lunches but this is often not the case. Proteins 'Must' Whether it's warm or cold we need to have our share of protein foods every day and foods that supply our necessary minerals and vitamins. Since the job of keeping our bodies warm isn't too difficult in summer we can get along on fewer calories. The problem then becomes how can we supply the nutrients we need, with fewer calories and still feel satisfied and comfortable — all with the least amount of cooking and serving of hot foods?

Nothing to your food requirement. The important thing to remember is to use these as supplementary refreshers to the food intake. Don't count on them to supply anything but a little sugar (which contributes only calories).

Most of the so-called fruit drinks come under this category. In some cases, the "drinks" have a bit of fruit juice incorporated but not much. Some of them have some synthetic vitamin C added. Most of them are nothing but artificial flavor, color, sugar and water. Soft drinks ordinarily contain carbonated water. The ready mix or instant powders most often contribute nothing but sugar.

Your best protection is to read the label. Contents must be declared on the label. See what you are getting. Is it worth to you what you're paying for it? Do you have enough money in your food budget to spend it on an item that may contribute little or no food value? Can you afford to pay this kind of money for something that is primarily water?

Maybe in our attempts to keep cool the results are only temporary and the crew gets increasingly uncomfortable just because they lack and crave some solid substantial food even if it is hot.

MONTGOMERY WARD 126 W. WASHINGTON ST. Daily—9:15 a.m.-5:00 p.m. Fri. — 9:30 a.m.-8:30 p.m. Satisfaction Guaranteed or Your Money Back! 3 DAYS ONLY JULY 11-12-13 JACK B. NIMBLE PORTRAITS ARE COMMENDED BY PARENTS MAGAZINE AS ADVERTISED THROUGH a big 11x14 PICTURE, BUST VIGNETTE, SUITABLE FOR FRAMING AN EXCEPTIONAL WARDS SAVING... 99¢ PLUS 50¢ for wrapping, handling, insurance Additional portraits are available in all sizes and styles at exceptional WARD Savings!

FAMOUS BRANDS

for the lady who pushes the cart...



OHIO
Book Matches Pkg. 50 10c

ICED RAISIN CINNAMON
Rolls Doz. 39c

IGA FROZEN
Waffles Pkg. 9c

THREE DIAMOND — SLICED, CRUSHED TIDBIT
PINEAPPLE . 2 20 Oz. Tins 49c

WESTFIELD TREAT—ORANGE, CHERRY, GRAPE
DRINKS 4 32 Oz. Tins 89c

MINUTE MAID ORANGE
DeLight 6 6 Oz. Can 89c

COMSTOCK CHERRY
Cherry Pie Mix 3 25 Oz. Glass 89c

PAGE
Toilet Tissue . 4 Rolls 29c

WESTFIELD
Grape Jam 2 Lb. Jar 39c

DOMINO
Cane Sugar 5 Lb. Bag 69c

MANDARIN
Oranges 4 11 Oz. Tin 89c

MIX OR MATCH

Radishes
Cucumbers
Green Peppers

2 FOR 15c

GEORGIA PEACHES 2 Lbs. 29c

NEPCO OIL

SARDINES
10c

THIS MONTH'S IGA SPECIAL
PILLSBURY'S
White Angel Food
CAKE MIX
2 PKG. 89c
NEW LOW PRICE

HORMEL'S CHILI
15 1/2 Oz. Tin 35c

GOOD LUCK OLEO
2 1 Lb. Pkg. 57c

FRISKIES' DOG FOOD
2 16 Oz. Tins 29c

FRISKIES' DOG MEAL
20 Lb. Bag \$1.99

CARNATION MILK
3 14 1/2 Oz. Tins 47c

SWIFT'S PREM

3 12 Oz. CAN \$1.00



SWIFT'S
BEEF STEW 3 24 Oz. Tin \$1.00

SWIFT'S SWIFTNING
Shortening 3 Lb. Tin 59c

SWIFT'S
OZ Peanut Butter 12 Oz. Jar 29c

SWIFT'S
Jewel Salad Oil Qt. Only 39c

SWIFT'S PREMIUM
Skinless Wieners Lb. 49c

SWIFT'S PREMIUM
Pork Link Sausage Lb. 49c

SWIFT'S PREMIUM
Sliced Bacon 1 Lb. Pkg. 59c

Chuck
Steak 39c
Table-Rite

BLADE CUT CHUCK ROAST Lb. 35c

CENTER CUT CHUCK ROAST Lb. 45c

BONELESS BEEF STEW Lb. 69c

IGA FOOD

TABLERITE KABOBS



Marinate for 2 hours 1 1/2 lb. Kabob Beef cubes in Barbecue Marinade consisting of 1/2 cup IGA Salad Oil, 1/2 cup Vinegar, 1 small onion, minced; 1 clove garlic, crushed; juice of half lemon, 1 tsp. honey, 1 tsp. salt, 1 tsp. mustard, 1 tsp. Worcestershire Sauce, 1/2 tsp. Tabasco. Alternate Beef cubes with cut up pieces of green pepper, mushroom caps, cherry tomatoes, pineapple chunks, interlaced with strips of TableRite bacon. Grill about 15 minutes turning and basting often over hot coals, about 5-8 inches from heat. Serve with fluffy rice and salad.



BANQUET

CREAMPIES 3 Pkg. \$1.00

SPRY 2 Lb. Tin 59c

RINSO BLUE 6's \$1.37

SURF 10's 64c

DAD'S
ROOT BEER 1/2 Gal. 49c

Negaunee Foodliner
LAKEVIEW LOCATION, NEGAUNEE

Trehwella's Store
PALMER, MICH.



Miracle Foodliner
MIRACLE CENTER, ISHPEMING

Mussatto's Store
GWINN, MICH.

HILLS BROS.
COFFEE 3 Lb. Tin \$1.83

LA CHOY
NOODLES 303 Tin 15c

LA CHOY
SOY SAUCE 5 Oz. Btl. 17c

LA CHOY
BEEF CHOP SUEY . 16 Oz. Can 55c

Old Utility Lines Rebuilt In Negaunee

NEGAUNEE — Municipal electric utility personnel activities in June centered primarily around rebuilding obsolete lines in the alley between Main and Lincoln Sts., according to the monthly department activities report of Supt. William Kokko.

Two new poles were erected with crossarms and hardware and new wire strung on the corner of Grand Ave. and Vine St. Lines were transferred from old to new poles, and one pole was removed.

Broken Poles Replaced
Two broken poles were replaced on the circuit serving the rural area. Line work was completed in the Cherry St. alley, where a transformer pole was replaced by a larger unit, which was set up with several spans of larger secondary wires.

Service Lines Repaired
Water utility personnel under direction of Foreman Edward Wernholm installed a new three-quarter inch water tapping on Grand Ave. and renewed one on Main St.

Utility crews repaired two service lines on Clark St. and two on Lincoln, checked hydrants, flushed sewers in the Teal Lake location on Owaissa and Ann Sts. and Healy Ave.

Industrial, business and residential water requirements totaled 34,240,000 gallons in June. The peak demand for a single day of 1,718,000 gallons was recorded on June 26, and the low of 796,000 on June 16.

County Law Group To Meet Tonight

NEGAUNEE — Members of the Negaunee Police Department will host the bi-monthly meeting of the Marquette County Association of Law Enforcement Officers in the Thimmes Memorial Building tonight.

Dinner will be served at 7 by St. Paul's Altar Society. A program will follow.

Cable Break Disrupts Telephone Service

DETROIT (AP)—A cable break caused by a contractor digging at a street intersection in suburban Roseville disrupted telephone services for nearly 1,000 Michigan Bell Telephone Co. customers in the Detroit area Tuesday. The near 10-hour break in service affected portions of nearby Roseville, East Detroit and St. Clair Shores.

Council To Consider Bids For Municipal Property Appraisal

NEGAUNEE — Members of the Negaunee City Council will consider bids for an appraisal of municipal properties when the governing body holds its regular monthly meeting at 7:30 tonight in the city hall council chambers.

Earlier this year the firm which has handled appraisals of municipal property in the past recommended in a letter to Manager Leonard Harris that a new appraisal be made in order that up-to-date valuations would be available for buildings and equipment. As part of the service, the municipality also has received a continuous appraisal program.

In view of iron mining property valuation cuts, which have resulted in declining revenues, council members were concerned with the estimated cost of the appraisal and suggested to the manager that he obtain bids, if possible, from several concerns for the work.

At the request of the council,

14 At Republic Class Of 1953 Reunion



Fourteen members of the Republic High School Class of 1953 attended a reunion dinner program at the Northwoods. Seven of their classmates were unable to attend. Pictured above (left to right) are: Front row — Shirley Nevala Mattila, Arlene Kwetkoski Suomi, Wesley Hendrickson, Donna Cook Colles, Gloria Antilla Erwin, Darlene Mattila Edison and Nancy Hangas; second row — Chester Brown (superintendent), Gerald Maki, Roy Korpi, Beverly Lyyski Hintsala, Bernice Kerkela and Jay Brady (principal); back row — Donald Shepherd, Ray Magnuson, Guy Wixtrom.

Cooperation In Water Use Still Needed In Township

ISHPEMING — Ishpeming Township residents are reminded that the request to cooperate with the City of Ishpeming in conserving water is still in effect.

In a request to the township board, T. R. McNabb, city manager, asked if township residents would regulate the sprinkling of lawns between the evening hours of 8 to 9. At the last monthly meeting, township board members unanimously agreed that an effort by the people of the township to use water sparingly would be most urgent at this time. Sprinkling during the evening hours between sunset and darkness would make lawn watering most effective, as the evaporation rate is lower at that time.

The city's reservoir, Lake Sally, has not filled up to its required height to guarantee plenty of water before next spring's runoff and efforts must be made to conserve the water throughout the summer months.

The last time Lake Sally was in a critical state was during the spring of 1949, when the lake level was 12 feet below the dam crest. Water at that time was pumped to the city through the township water mains from mine wells now abandoned.

Over the past years there has been a steady increase in the amount of water consumed by

township residents. This is partly due to an increase in population, but the increase in water consumption is increasing at a higher rate than the population growth.

The township purchases its water wholesale from the City of Ishpeming, and then retails it to township residents. In July of 1960, the wholesale price of water to the township was increased 67 per cent. In July of 1961 the cost was increased only 33 per cent to township residents. This left the margin of profit reduced to operate the water system and to pay off the bond debt. This bond debt presently is \$84,000 and is paid off at the rate of \$4,000 a year plus interest.

Costly repairs were made after last winter's freeze-ups and more repairs are to be made. Individuals who had trouble with freezing pipe lines are requested to inspect the route of their lines for wetness and possible leaks which may have occurred. Any such leaks are to be reported to Albert LaFreniere, township water commissioner, HUG-6057.

In the past two years, the township's water system has been revamped. These revisions included reduction of personnel, control system changes, pumps that were overhauled and a new type of billing system. All these changes were designed to make the water system more efficient.

With the rate of water consumption increasing yearly, it is going to lead to the regulation control

of water through the use of new meters or some other means, the township board said. A preliminary survey has indicated that the cost of new meters in every home would be approximately \$40 installed, or \$20,000 to \$25,000 for all unmetered customers. This cost would be placed on each customer. There would be an annual cost of \$5,000 for maintenance, meter reading and clerical work in the computing of each water bill. An increase of \$10 annually for each water customer would have to be made to cover this cost.

The township board has always believed that residents should have all the water they need, unmetered, and at a reasonable cost. It is hoped that each person will realize that water must be utilized conservatively and wisely so that metering of water or an increase in the price of it will not have to be made. Cooperation is needed from all persons so as to assure sufficient water for next winter's needs.

FRIDAY
Dance—Fish Fry
MUSIC STARTS 8 P.M.
Don's Country Serenaders

- FISH FRY 77c
- SHRIMP \$1.10
- LOBSTER \$2.25

WAYSIDE BAR
County Road 581 — Ishpeming

CARLOAD RAMSETH
Chairs, Chairs, Chairs
All sizes, colors and styles.
Recliners, Rockers, Swivels
and many others at low, low
Ramseth Prices!

Sunbeam Steam &
Dry Irons \$9.95
Ramseth Furniture
Brookton Corners U.S. 41

DANCE TONIGHT SATURDAY
TONIGHT — Music By DON'S COUNTRY SERENADERS
SATURDAY Music By Rusly's Troubadours
PIZZAS — Eat Here or Take Out
WAGON WHEEL U.S.-41 Between Neg. and Ish.

CUT UP FRYERS	Lb.	29c
ROUND STEAK	Lb.	69c
RIB STEAK	Lb.	59c
CHUCK ROAST	Lb.	49c
BLADE CHUCK ROAST	Lb.	37c
ECONOMY RIB ROAST	Lb.	49c
BY CHUNK SLAB BACON	Lb.	29c
CENTER CUT HAM SLICES	Lb.	69c
HILLSDALE PEARS	4/29-Oz. Cans	\$1.00
HILLS BROS. COFFEE	2-Lb. Can	\$1.15
LARGE CELERY	Stock	10c
GREEN PEPPERS	Each	5c
SANTA ROSIA PLUMS	Lb.	25c

SEE AL FOR BIGGER AND BETTER STEAKS
AL'S MARKET
PRINCE ST. GR 5-4797 NEGAUNEE

DANCE TONIGHT, FRIDAY AND SATURDAY
Tonight Music By Arlene Hann Trio
Fri. and Sat. Music By Bill Stark
9:30 P.M. TO 1:30 A.M.
HI-LO NIGHT CLUB
U.S. 41 HWY.

GET TICKETS NOW FOR
MISS MICHIGAN DANCE
FRI., JULY 12—ISHPEMING ARMORY
MUSIC BY
BILL DeROCHER ORCHESTRA
(Formerly Paul Goodman's Orchestra)
Tickets On Sale At
JOHNSON'S DRUG STORES — Marquette & Ishpeming
CRONIN PHARMACY — Negaunee
AND FROM JUNIOR CHAMBER OF COMMERCE MEMBERS
Ishpeming — Negaunee — Marquette
Dancing 9 P.M. to 1 A.M. — Admission \$1.00 Person

ALLEY OOP

SO DOES GONE TO INTERVIEW THE GUY WHO'S GONNA TAKE OVER MY OL' JOB? YEP!

HE MUST BE QUITE A FELLA! PROBABLY IS!

WHERE'D HE FIND 'EM? MOO! MOO! MOO!

MOO! MOO! MOO!

WASH TUBBS

UP THE PINCO RIVER, WHICH CENTURIES AGO THE INCAS HAD STRAIGHTENED AND CONFINED TO LEAVE MORE ROOM FOR PLANTING POTATOES.

YES—AT SUN-UP!

THEY'RE GAINING ON US! BLAZES, WE CAN'T GO ANY FASTER WE'RE SO HIGH NOW I HAVE TO KEEP STOPPING TO BLOW!

THAT WAS TAMPU, EASY, NOW EAST FIVE MORE LEAGUES TO NITAYO!

WE'LL HAVE NO RIVER TO FOLLOW NOW, LAND NOT MUCH TRAIL, ONLY LANDMARKS KAY GAVE US!

FRECKLES

GOSH, ANY CAR IS WORTH THAT PRICE! HONES/HANK'S CAR SALES

WELL, SON, I HAFTA BE HONEST WITH YOU...

THIS CAR WILL ONLY RUN DURING A HEAVY RAIN!

YESSIR, GIVE IT THREE FEET OF WATER AND THEN WATCH IT RAMBLE!

BARNEY GOOGLE

HOWDY, SAMANTHY

DON'T "HOWDY" ME, JUGHAD SMITH!!

I SEEN YE FLIRTIN' WIF BIRDIE JUNE HICKS YESTIDDY

ME? FLIRTIN' WIF BIRDIE JUNE?

YE SHORE WUZ!! I SEEN YE WHACK HER ON TH' HEAD WIF A PINE BURR

BLONDIE

EXCUSE ME, POP BUT I'M IN A HURRY

WHAT'S THE BIG RUSH?

I HAVE A DATE AND I'VE GOT TO PUT FRESH OIL ON MY HAIR

TO HIM THE BATHROOM IS NOTHING BUT A GREASE RACK

L'I' ABNER

BULLMOOSE IS IN THERE—TAKING OFF HIS CLOTHES!! I-C HUCKLE-F-WON EVERYTHING HE OWNS!!

DID YOU GET RID OF THAT SHITCOON?

SHORE DID!!—FO' \$100!!

—CEPT THEY CALLED IT A STATUS SYMBOL!!

??-GASP!!—WHY DIDN'T I REALIZE THAT? IT'S THE GREATEST STATUS SYMBOL!!

IT'S UTTERLY WORTHLESS, BUT FABULOUSLY EXPENSIVE!! I'LL SELL 100,000 ON PARK AVENUE, ALONE!!

RIP KIRBY

PLEASE, MY ARM!

NEVER DO THIS AGAIN, SABLE!

MY CHANCE... NOW!

THE MOVEMENT CATCHES SCORPION'S GLANCE.

OH! DO THESE LADIES JOIN IN DECEIT?

STEVE CANYON

THAT'S IT, NORM... WHEN THE MACHINE TURNED UP THE PRINTS OF COPPER CALHOUN, THE WITCHY RICH DAVE PLUS THOSE OF SAM BOUTEVARD...

AS YOU CAN IMAGINE, WE WERE ABOUT TO CALL IN THE REPAIRMAN... BUT WE CHECKED WITH DEFENSE AND LEARNED THAT THE TWO OF THEM ARE PLAYING WAR GAMES IN THE PUZZLE PALACE!

BY SHEER REASONING AND BRILLIANT MOVIE-TYPE DEDUCTION WE CONCLUDED THAT THE PAPER WAS PART OF A MUCK-WAR PROBLEM! THIS WAS CONFIRMED!

SO NOW YOU CAN GRACEFULLY RETURN TO WORRYING WHETHER THE N.Y. METS WILL OUT-LOSE WASHINGTON AND BLOW YOUR 25¢ BET!

SQUISO, WHAT HAPPENED ABOUT THAT PAPER WE FOUND?

REE, OLEY, ANY DAD SAID HIS BOSS GAVE THE NOTE TO THE F.B.I!

BEN CASEY

SO YOU'VE THREATENED TO HAVE ME CRIPPLED, EH GOMBA? AFTER ALL THE YEARS OF STRIVING FOR RESPECTABILITY, YOU'VE FAILED!

YOU'VE REVERTED TO WHAT YOU WERE... WHAT YOU STILL ARE!

THAT FINE LITTLE BOY IN THERE IS THE ONLY DECENT PART OF YOU, GOMBA—AND YOU'RE NOT FIT TO RAISE HIM. NOW, GET OUT!

Thousands Welcome Miss Michigan Home

ISHPEMING — "I've been waiting all week to bring the Miss Michigan title and honor back to Ishpeiming, where it belongs."

With those words, a tired but still smiling and happy Kathy McLaughlin received a standing ovation from a welcoming crowd gathered at the Ishpeiming Playgrounds last night as the climax to a day filled with greetings from Upper Peninsula proud of their first Miss Michigan.

The dark-haired, bright-eyed beauty was acclaimed all along the way Wednesday, as she returned to the U.P. from Muskegon, where she gained the state queen's crown last Friday night. Hundreds cheered her in St. Ignace, Newberry, Munising, Marquette and Negaunee before her arrival in Ishpeiming.

Flowers and cheers accompanied the cheers at each stop.

Proud of the honor she had won for Ishpeiming, the new Miss Michigan showed she has lost none of the personality that has endeared her to all who have met her and which undoubtedly will

gain her thousands of friends during her year's reign.

Credits Brother's Encouragement

"I know where my backers are," she said during the Playgrounds reception, pointing to the crowd in the football stadium. That brought a tremendous ovation, as did her acknowledgment of the help and encouragement given by her brother, Mike, popular Ishpeiming High School football player, when she entered the "Miss Ishpeiming" contest last fall.

Earlier she showed her friendliness toward her admirers when she called for an unscheduled stop at Naubinway, tiny hamlet on U.S. 2, where the highway was lined with youngsters waiting for a glimpse of Miss Michigan. She spent some time talking with residents and signing autographs.

The first royal welcome came at the Mackinac Bridge, where Kathy was greeted by civic representatives from Ishpeiming, Negaunee, Marquette and St. Ignace. Their faces radiated the eagerness and pride in greeting the girl

who had brought the state beauty title north of the Straits for the first time.

St. Ignace Mayor Roy A. Carlson presented her with a bouquet of flowers, the first of many she was to receive during the 200-mile triumphal tour.

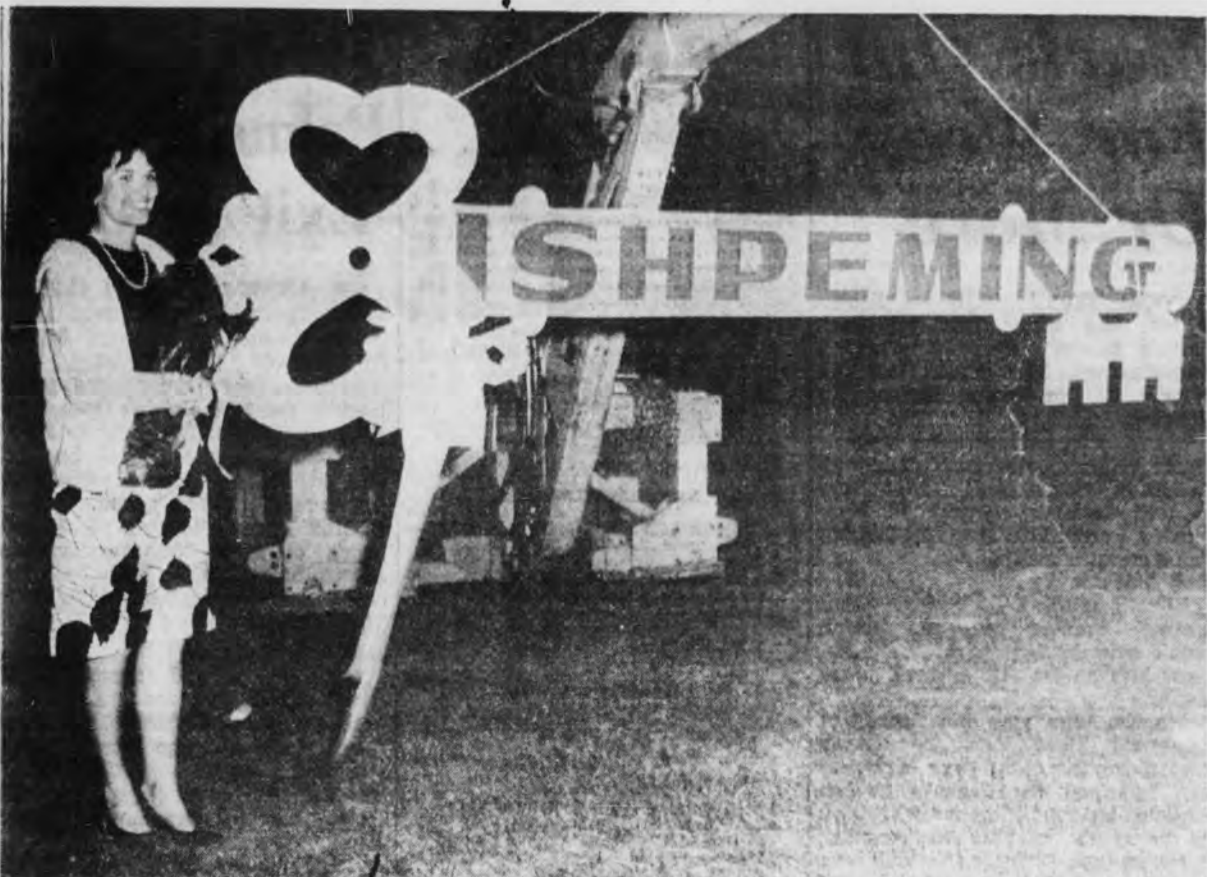
Members of the Junior Chamber of Commerce in Newberry laid off work to prepare a reception in that town, most of whose residents turned out to greet her. After an official welcome by Mayor A. K. Jackson, JCC President Jack Derusha gave her a wrist corsage and Alice Robinson, Newberry's entry in the Miss Upper Michigan beauty pageant in April, presented her with a lapel watch.

A tour of the Newberry State Hospital brought more flowers.

Reception in Munising

The Silver Echoes Drum and Bugle Corps greeted Miss McLaughlin in Munising, where several hundred more were on hand to wave and shout congratulations. Another gift and official greetings were proffered by Mayor Leo Garipey.

"I closed my shop for you," one Munising merchant proudly called out.



A smiling Kathy McLaughlin holds a huge 'Key to the City,' presented her by proud residents of Ishpeiming during a welcoming ceremony at Playgrounds last night. — (Mining Journal photos.)



Judy Boyum (left) presents gift to Miss Michigan at stop in Negaunee. Miss Boyum was entrant in Miss Upper Michigan pageant held at Northern Michigan University in April.



Official greetings to state queen at Munising were extended by Mayor Leo Garipey. Thousands greeted her there.

Tri-County Briefs

Alger . Baraga . Marquette

Negaunee

No worship service at the Mission Covenant Church Sunday, July 14. Instead, all members and friends are invited to attend the "Conference Sunday" services at Hagerman Lake. Services will be held at 11 a. m. and 3 p. m.

Ishpeiming

Women of the Moose will meet in the Ishpeiming Moose lodge rooms at 8 p. m. next Monday.

Carlshend

There will be no service or Sunday School in the Evangelical Covenant Church this Sunday.

Gwinn

Bruno Zanetti is a surgical patient in Bell Memorial Hospital, Ishpeiming.

and sons of Livonia have been visiting at the home of Mr. and Mrs. Arnold Keskimaki.

Flemon Luoma was guest of honor at a birthday party at the Toivo Luoma home on his 76th birthday. Out-of-town guests attending were Mr. and Mrs. Melvin Sequin of Dearborn, George Korpenfelt of Grand Haven, Mr. and Mrs. Howard Krook and Mr. and Mrs. Carl Luoma of Negaunee and Mr. and Mrs. Reino Luoma of Marquette.

Mr. and Mrs. William Laitinen, Chatham, will hold "open house" at their home from 2 to 8 p. m. Sunday, July 14, in observance of their 50th wedding anniversary. An invitation is extended to all relatives, neighbors and friends.

Trailer Damaged In '41' Accident

BARAGA — An auto towing a camp trailer ran out of control on U. S. 41, 6 miles north of Baraga yesterday morning at 9:30 and rolled the trailer over.

Robert M. Munns, 64, East Peoria, Ill., told state police he had just passed another vehicle which was traveling at a slow rate of speed. When Munns returned to the southbound lane the trailer failed to follow the car properly, causing the auto to zigzag and go out of control. It ran off the road on the right side, then back onto the pavement and the trailer whipped and rolled over. Munns was able to drive the auto from the scene of the accident, but the trailer was badly damaged.

Motorist Ticketed In One-Car Crash

NEGAUNEE — A driver received a summons and his automobile was damaged as a result of a one-car wreck yesterday on County Road J.L., just east of the Negaunee city limits.

State police said Clifford Carlson, Route 1, Negaunee, was driving west on the county road when his car ran off the road to the right and crashed into a fence, bushes and rocks.

Damages resulted to the front and right side of the vehicle, which had to be hauled away by wrecker. Carlson may have dozed off, state police theorized. He was ticketed for violation of the basic speed law.

Inspectors Named For Special Tax Election Monday

DIORITE — Election board inspectors have been named for the special balloting to be conducted next Monday, July 15, on a two-mill county tax proposal. The levy, in effect the last two years, is to provide funds needed for welfare purposes in Marquette County.

The Ely Township polls in both Greenwood and Diorite town halls will be open from 7 a. m. to 8 p. m. Make-up of the election boards: Greenwood — Marion Laakso, Jerry Westman, Sigrid Vahamaa, Diorite — Viola Currie, Maxine LaParche, Matilda Grund.

Sidnaw

Mrs. George Beauprey is visiting her brother and sister-in-law, Mr. and Mrs. Warren Naber, in Lower Michigan.

Mr. and Mrs. Robert Golden and family of Phoenix, Ariz., are visiting her parents, Mr. and Mrs. Perry Thompson. They will also visit Mr. Golden's parents in Chaswell.

Chatham-Eben

Mrs. Amanda Seppanen and Mrs. Reino of Detroit spent the Fourth of July weekend at the William Maki cottage at AuTrain and visiting relatives and friends in Chatham.

Mr. and Mrs. Robert Arnold of Los Angeles were recent visitors at the William Maki cottage at AuTrain. They also visited in Chatham during their stay.

Mr. and Mrs. Douglas McGee

Obituary

MRS. WILLARD HARLAN

NEGAUNEE — Services for Mrs. Willard Harlan will be held at 9 a. m. Friday morning in the Koskey Funeral Home. The Rev. Joseph Charlebois, assistant pastor at St. Paul's Catholic Church, will officiate. Burial will be made in Negaunee Cemetery.

Palbearers will be Bert Parolini Jr., Eugene DeGabriele, Elmer Peterson, Joseph Holman, Paul Ollila and William Rytkonen.

The body is in the Koskey Funeral Home, where the Rosary will be recited at 8 this evening.

SUMMER CLEARANCE NOW IN PROGRESS

Open Thurs. 'Til 9 P.M.

GOLDIE'S OF ISHPEMING

NOW IN PROGRESS SEMI-ANNUAL CLEARANCE

SHOP NOW AND SAVE AT

The STYLE SHOP

ISHPEMING

OPEN THURSDAYS 'TIL 9 P.M.

20% OFF

ON ALL CHILDREN'S

- BATHING SUITS
- SUMMER DRESSES
- SPORTS WEAR

THE CHILDREN'S STORE 300 Iron St. Negaunee

Ishpeiming Council Supports Continuance Of Welfare Tax

ISHPEMING—"The ballot which will be voted on July 15 will not authorize a new tax in Marquette County; rather, it will be a continuance of the present tax structure," Thomas McNabb, Ishpeiming city manager, said today.

The Ishpeiming City Council went on record in support of the millage increase.

McNabb said welfare funds during recent years consume approximately 38 per cent of the total county tax. For comparison purposes, the figures in 1962 are a total county tax of \$970,877.73 for all county purposes, of which the sum of \$368,795 was transferred to the welfare department for its operations.

"The total of \$970,877.73 included the two extra voted mills which we now seek to continue for another five-year period," McNabb declared.

"It can readily be seen that if the ballot is not successful, a loss of \$180,000 in county taxes (two mills on approximately \$90,000,000 of valuation) would mean a cut-back of welfare monies to about 50 per cent of the present level.

"The welfare department simply could not begin to function with that type of financing. So far as other county departments are concerned, they have functioned for years and are functioning on conservative budgets and this year are faced with serious cutbacks because of the mine valuation decreases.

"There is no room, therefore, in other county department financing to make room for the carrying of the additional welfare load should the tax availability to the welfare department fail by ballot."

"The principal reason for increasing costs of welfare in Marquette County, as well as in practically all other counties in the state, is certain mandatory federal and state regulations in the hospitalization program.

"Another factor for increased costs is the rising rates set by hospitals.

"It also is noted that there has been a sizeable increase in the employable case load, due to curtailment of available jobs in the area."

Tuna have been known to swim at 40 miles an hour.

SPECIALS!

Adorn Beauty Shop

1021 Oak St. Negaunee

Cleaning Up My Sock

Lipidized Cream Wave \$7.50

Other Cream Waves \$6.50

SYEA GRAYES — Owner & Operator

JUDY AIRAUDI — Experienced Operator

AIRPORT DRIVE-IN THEATRE

Twin Hits Nitely At Dusk!

Rain Or Clear! Open at 7:30!

NOWTHRU SAT.!

EDWARD SMALL PRESENTS **Jack the Giant Killer**

FANTASCOPE TECHNICOLOR

CO-FEATURE

5 Great Stars Challenge You to Guess the Disguised Roles they Play! **"THE LIST OF ADRIAN MESSENGER"**

HUGE FREE KIDDLAND

Future Homemakers Attend Convention

LANSING (AP) — Michigan Future Homemakers of America have 21 representatives attending the national convention this week at Kansas City, Mo. Leading the delegation are state president Barbara Barich of Ypsilanti and vice president Jacquelyn Cross of Kalkaska.

No birds now living have teeth.

E. A. JOHNSON, INC.

200 NORTH FIRST HU 6-9971 ISHPEMING

WE TAKE GREAT PRIDE IN WELCOMING KATHLEEN McLAUGHLIN MISS MICHIGAN HOME

TABLERITE BLADE CUT CHUCK ROAST	Lb. 35c
TABLERITE CENTER CUT CHUCK ROAST	Lb. 45c
TABLERITE BONELESS BEEF STEW	Lb. 69c
SWIFT'S PREMIUM SLICED BACON	Lb. 59c
SWIFT'S PREMIUM WIENERS	Lb. 49c
SWIFT'S PREMIUM SKINLESS PORK SAUSAGE LINKS	Lb. 49c
SWIFT'S PREM 3/12-Oz. Cans	\$1.00
SWIFT'S BEEF STEW 3/24-Oz. Cans	\$1.00
SWIFTNING 3-Lb. Can	59c
CARNATION EVAP. MILK 3/14 1/2-Oz. Cans	47c
HORMEL'S CHILI 15 1/2-Oz. Can	35c
PILLSBURY WHITE ANGEL FOOD	2 Pkgs. 89c
LA CHOY NOODLES No. 303 Can	15c
LA CHOY SOY SAUCE 5-Oz. Btl.	17c
BEEF CHOP SUEY 16-Oz. Can	55c
SPRY 2-Lb. Can	59c
GOOD LUCK OLEO 2 Lbs.	57c
ICED RAISIN CINNAMON ROLLS	Pkg. 39c
MANDARIN ORANGES 4/11-Oz. Cans	89c
PAGE TOILET TISSUE 2/4 Roll Paks	29c
SWEET AND JUICY GEORGIA PEACHES	2 Lbs. 29c
RADISHES, CUCUMBERS, PEPPERS	2 For 15c

BUTLER

NOW SHOWING

EVEs. 7 & 9

JOHN WAYNE "JOHN FORD" DONOVAN'S REEF

TECHNICOLOR

LEE MARVIN ELIZABETH ALLEN JACK WARDEN CESAR ROMERO BOB FORAN and GEORTRY LAMOUR

PLUS: CARTOON

VISTA THEATRE

AND ISHPEMING THEATRE

TONIGHT Thru TUES. MATINEE FRIDAY at 1:30 AT BOTH THEATRES EVENINGS: 7:00-9:00

DANGER WORE A PAINTED FACE!

Walt Disney Savage Sam

TECHNICOLOR

Released by BUENA VISTA Distribution Co., Inc. © 1963 Walt Disney Productions

ADDED: CARTOON

ADMISSION ALL SHOWS 85c-65c-50c

NO MATINEE SATURDAY

Announcements—
Personals 7

Services—
Auto Service—Repairing 10

Expert Radiator Repair
 Guaranteed workmanship. FREE INSPECTION. — AUTOMOTIVE RADIATOR & GLASS. — 344 W. Wash., Marquette, CA 6-8913.

RADIATOR REPAIRS
 All makes and models at OLSON MOTORS INC. Call CA 6-6589.

Building Trades 13

CEMENT, BRICK AND BLOCK work. Builders. Free estimates. No job too small. All work guaranteed. Phone 412-5284.

Business Services 14

FURNACE CLEANING
 Services on all makes. CALL NORTHERN HEATING SERVICE. CA 6-9093. Marquette.

51 HOUR AIR AMBULANCE SERVICE. Fast Dependable. — CALL 473-4113. Nights 223-1632. — PENNSULA AIR SERVICE. Marquette County Airport.

WEILAND'S BIKE SHOP
 Visitors Comin'! Bike rentals by the week. \$8.00 weekly. — CA 6-3643. Marquette.

WILSEY SEPTIC Pumping Service. Serving Marquette area 20 years. For prompt efficient service call CA 6-7774. 1715 30th St., Marquette.

RYCICLE & LAWN MOWER SERVICE
 Hand Mowers sharpened. No Trade Good Bikes. — ART HEBBARD. 205 Oak Street. Ishpeming. HU 6-9452.

LACHANCE SEPTIC PUMPING SERVICE. Septic tanks and septic ponds. For thorough service call CA 6-9066. Marquette, Michigan.

Film Developing 17

SAVE! NEW LOW PRICES.
 Black and white photo finishing
 8 Exposure Roll, Jumbo prints45¢
 12 Exposure Roll, Jumbo prints60¢
 Jumbo prints15¢
 COLOR FILM PROCESSING
 12 Exposure Kodachrome Jumbo prints22.99
 8 Exposure Kodachrome Jumbo prints22.99
 Kodachrome prints each12¢
 Send for free matter

Cameras 17-A

USED 35mm SLIDE CAMERAS also 8 and 16mm. Excellent.
 Buy! — BEAUCHAMP'S CAMERA. 3rd-Bluff, Marquette, CA 6-7991.

Radio and Television Service 23

RAY'S ELECTRONICS
!! SUMMER SPECIAL !!
 Used television as low as \$5 down. Radio and television servicing on all makes and models. Same daily service usually with in the hour. Tubes tested free. Open 9 till 9 daily. 717 North 3rd Street, Phone CA 6-7722. Marquette.

State Highway System
Allocated Federal Aid

WASHINGTON (AP) — Michigan's interstate highway system has been allocated \$104,385,712 in federal aid as part of the expanded National Highway Program in the 1965 fiscal year starting July 1. The state's primary, secondary and urban highway system has been apportioned \$32,888,229 of the total federal aid to the states. Secretary of Commerce Luther H. Hodges said the total apportionment of federal aid for the expanded highway program is \$3.68 billion, including \$2.7 billion for the interstate system and \$975 million for the primary, secondary and urban systems.

Announcements—
Personals 7

Services—
Auto Service—Repairing 10

Expert Radiator Repair
 Guaranteed workmanship. FREE INSPECTION. — AUTOMOTIVE RADIATOR & GLASS. — 344 W. Wash., Marquette, CA 6-8913.

RADIATOR REPAIRS
 All makes and models at OLSON MOTORS INC. Call CA 6-6589.

Building Trades 13

CEMENT, BRICK AND BLOCK work. Builders. Free estimates. No job too small. All work guaranteed. Phone 412-5284.

Business Services 14

FURNACE CLEANING
 Services on all makes. CALL NORTHERN HEATING SERVICE. CA 6-9093. Marquette.

51 HOUR AIR AMBULANCE SERVICE. Fast Dependable. — CALL 473-4113. Nights 223-1632. — PENNSULA AIR SERVICE. Marquette County Airport.

WEILAND'S BIKE SHOP
 Visitors Comin'! Bike rentals by the week. \$8.00 weekly. — CA 6-3643. Marquette.

WILSEY SEPTIC Pumping Service. Serving Marquette area 20 years. For prompt efficient service call CA 6-7774. 1715 30th St., Marquette.

RYCICLE & LAWN MOWER SERVICE
 Hand Mowers sharpened. No Trade Good Bikes. — ART HEBBARD. 205 Oak Street. Ishpeming. HU 6-9452.

LACHANCE SEPTIC PUMPING SERVICE. Septic tanks and septic ponds. For thorough service call CA 6-9066. Marquette, Michigan.

Film Developing 17

SAVE! NEW LOW PRICES.
 Black and white photo finishing
 8 Exposure Roll, Jumbo prints45¢
 12 Exposure Roll, Jumbo prints60¢
 Jumbo prints15¢
 COLOR FILM PROCESSING
 12 Exposure Kodachrome Jumbo prints22.99
 8 Exposure Kodachrome Jumbo prints22.99
 Kodachrome prints each12¢
 Send for free matter

Cameras 17-A

USED 35mm SLIDE CAMERAS also 8 and 16mm. Excellent.
 Buy! — BEAUCHAMP'S CAMERA. 3rd-Bluff, Marquette, CA 6-7991.

Radio and Television Service 23

RAY'S ELECTRONICS
!! SUMMER SPECIAL !!
 Used television as low as \$5 down. Radio and television servicing on all makes and models. Same daily service usually with in the hour. Tubes tested free. Open 9 till 9 daily. 717 North 3rd Street, Phone CA 6-7722. Marquette.

State Highway System
Allocated Federal Aid

WASHINGTON (AP) — Michigan's interstate highway system has been allocated \$104,385,712 in federal aid as part of the expanded National Highway Program in the 1965 fiscal year starting July 1. The state's primary, secondary and urban highway system has been apportioned \$32,888,229 of the total federal aid to the states. Secretary of Commerce Luther H. Hodges said the total apportionment of federal aid for the expanded highway program is \$3.68 billion, including \$2.7 billion for the interstate system and \$975 million for the primary, secondary and urban systems.

LOOK ONLY \$49.18 PER MONTH

'63 FORD FAIRLANE

★ 2-DOOR SEDAN — 6 CYLINDER — STANDARD TRANSMISSION — 2-SPEED ELECTRIC WIPERS AND WASHER — BACK-UP LIGHTS — (Stock No. 176).

ALL TAXES AND LICENSE PAID! 5% INTEREST 36 MONTHS TO PAY!

LOOK ONLY \$52.46 PER MONTH

'63 FORD GALAXIE

★ MAINLINER 300 — 2-DOOR SEDAN — 6 CYLINDER — STANDARD TRANSMISSION — 2-SPEED ELECTRIC WIPERS AND WASHER — WHEEL COVERS — 2-TONE PAINT (Stock No. 162).

ALL TAXES AND LICENSE PAID! 5% INTEREST 36 MONTHS TO PAY!

★ TO PERSONS WITH APPROVED CREDIT!

OLSON Motors, Inc.

925 W. WASHINGTON ST. — MARQUETTE
 OPEN: MON.—WED.—FRI. EVENINGS 'TIL 9:00 CA 6-6569
 Guy Petersen Don Grossbauer Lou Carlson
 CA 6-8384 CA 6-6482 CA 6-3317
 ★ FORD ★ LINCOLN ★ MERCURY

BEFORE YOU BUY SEE OUR LARGE SELECTION OF LATE MODEL Used Cars

★ All Makes and Models.
 ★ All Priced For Quick Sale!!
 ★ Many Older Models At Low Prices!
 • Buy On Easy Terms •

NAROTZKY MOTORS

DODGE — DODGE DART DODGE TRUCKS
 OPEN EVENINGS 'TIL 9 330-38 Main St. HU 6-4447 ISHPEMING

WE'LL BE HERE TOMORROW TO BACK THE CAR YOU BUY TODAY!

Sarasin Real Estate
 PHONE GR 5-4051
 Ray Larson—Salesman HU 6-6360—Ishpeming
 Jack D. Williams—Salesman HU 6-9861—Ishpeming

The Board of Education of Marquette School District No. 10 is requesting sealed bids on a 1963 — 72 passenger — non-conventional School Bus Body and Chassis.

Until July 18th, 1963, specifications and Bid Forms may be obtained by calling in person on Howard Berryman, Secretary, at 2163 Montgomery Street, Marquette, Michigan.

Bids will become the property of the Board of Education. The Board reserves the right to reject any or all bids and is not bound to accept low bids.

NO MORE TRAILER STORAGE PROBLEMS!

SEE OUR NEW FOLDAWAY TRAILERS

(From A Fun-Giving Camper To Compact Storage In Minutes)

★ ★ ★ FOLDAWAY is the family fun and utility trailer with the amazing ability to fold together in compact form when not in use! STORE IT ANYWHERE — in the garage, basement, attic, closet, car trunk. Easily assembled and ready to roll as camper, picnic table, boat trailer, utility trailer — ideal for compact and small imported cars too!

SARASIN REAL ESTATE
 PHONE GR 5-4051
 Ray Larson—Salesman HU 6-6360—Ishpeming
 Jack D. Williams—Salesman HU 6-9861—Ishpeming

TEST DRIVE THE Safe SAAB

Sharp — 1960 Karmann Ghia Only \$1295.00

LARSSON MOTORS
 300 W. Magnetic CA 6-8961

SPECIAL BUY — REAL ESTATE —
 130 E. Superior St., Ishpeming
 Two family home. Can be used as one family residence. Oil hot water heat. Full basement, upstairs five rooms, four rooms down. All modern, excellent condition. Available for appointment only. Reduced in price.

Sarasin Real Estate
 PHONE GR 5-4051
 Ray Larson—Salesman HU 6-6360—Ishpeming
 Jack D. Williams—Salesman HU 6-9861—Ishpeming

LARSSON MOTORS
 • Factory Trained SAAB Mechanics • Factory Trained Volkswagen Mechanics
 300 W. Magnetic St. — Dial 226-8961 — Marquette

USED CARS

'60 CHEVY Bel Air

4-Door, 6 Cylinder, Standard Shift, Radio, Heater, One Owner, "Runs Nice Too!"

'59 CHEVY 4-Door

6 Passenger, Station Wagon, 6 Cylinder, Standard Transmission, Radio, Heater, Immaculate One Owner Unit!

'56 CHEVY Bel Air

4-Door, V-8, Automatic Transmission.

'56 CHEVY

Carry-All. 6 Cyl. Standard Transmission. \$495.00

'59 FORDS

"2 To Choose From!" V-8's, Automatics, 2-Door and 4-Door. "Sharp 1 Owner Units!"

'58 BUICK

SPECIAL Sport Coupe, V-8, Automatic, Radio, Heater, "Runs Nice!" No Rust!

LARGE SELECTION OF OTHER LATE MODELS—SEE THEM!

ISHPEMING VIELMETT CHEVROLET

Phone HU 6-4445

Additional text and page information at the bottom of the page.

LORD'S REPEAT FOR 8 DAYS THEIR BIG
BEDDING SALE!

STARTS TOMORROW
 FRIDAY, JULY 12
 ENDS SATURDAY
 JULY 20th! HURRY!

2 FOR 1

BOTH FOR **\$80**

Here's a terrific buy! Sturdy Hardrock Maple Bed Outfit complete with mattress, ladder and guard rails. Rugged construction for rugged use. Converts easily into 2 twin beds.

CRIB MATTRESS BOTH FOR \$35

Deluxe nationally advertised panel crib with double drop sides. Sturdy hardwood construction in popular panel style. Choice of dral finish. Correct posture famous make never wet mattress included. Get both crib and mattress at this low price.

BOTH FOR \$120

Handsome Hollywood bed outfit designed to give your bedroom glamorous and luxurious comfort. Beautiful scallop-top plastic upholstered headboard with button trim. Famous National mattress and matching box spring on legs.



BOTH MATTRESS & BOX SPRING \$38

Famous National Mattress with choice of colors. Matching Box Spring! Get Both for One Price!

BOTH MATTRESS & BOX SPRING \$54

FAMOUS NATIONAL MATTRESS WITH SMOOTH TOP TUFTLESS IMPORTED DAMASK COVER. MATCHING BOX SPRING

BOTH MATTRESS & BOX SPRING \$68

QUILTED COVER MATTRESS AND MATCHING BOX SPRING COMPARE WITH OTHERS AT \$159.00 GET BOTH AT THIS LOW PRICE

low price!

NO MONEY DOWN

UP TO 36 MONTHS TO PAY

<p>JUST RECEIVED NEW PATTERNS HEAVY FELT BASE Linoleum 12 FT. WIDTHS. ASSORTED COLORS. Sq. Yd. 79c</p>	<p>STOCK UP NOW FALL PAINT-UP TIME SUPER Kem-Tone All The Most Wanted Colors — Reg. 6.59. Lord's Low-Gal. \$4.99</p>	<p>WESTINGHOUSE 52 GAL. ELECTRIC HOT WATER HEATERS DOUBLE ELEMENT GLASS LINED Only \$79.95</p>	<p>SPECIAL LUSTRA LIGHT BULBS 25—40—60—75 OR 100 WATT YOUR CHOICE 5 FOR \$100</p>
----------------------------------------------------------------------------------------------------------------------------------------------	------------------------------------------------------------------------------------------------------------------------------------------------------------	---------------------------------------------------------------------------------------------------------------------------------------------	-----------------------------------------------------------------------------------------------------------------

FREE DELIVERY ALWAYS

LORD'S OUTFITTING COMPANY

301 SO. FRONT ST. MARQUETTE DIAL 6-2551

- 4 WAYS TO BUY
- CASH
 - CHARGE
 - TERMS
 - LAYAWAY