

Adams Township, MI

ENGINEER'S OFFICE

F. P. NO.

REQUISITION NO.

DRAWN BY *Mercer*

CHAMPION COPPER CO.

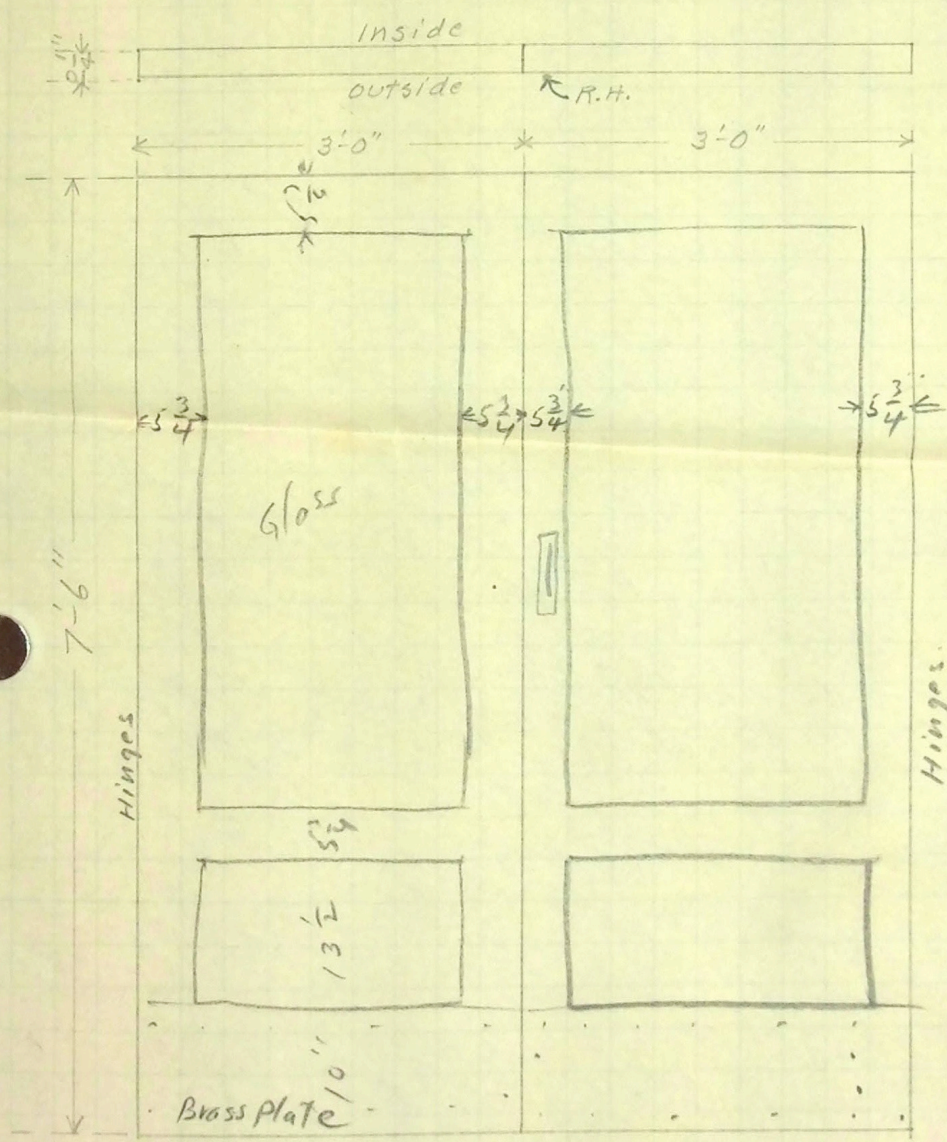
PAINESDALE, MICH.

CHECKED BY

DATE *Nov. 3, 1923* 191...

SUBJECT *HIGH SCHOOL DOORS*

5-sets, All R.H., Taken from outside



Outside View

Adams Township, MI

Sketch No. _____

CHAMPION COPPER CO.

DRAWING ROOM SKETCH.

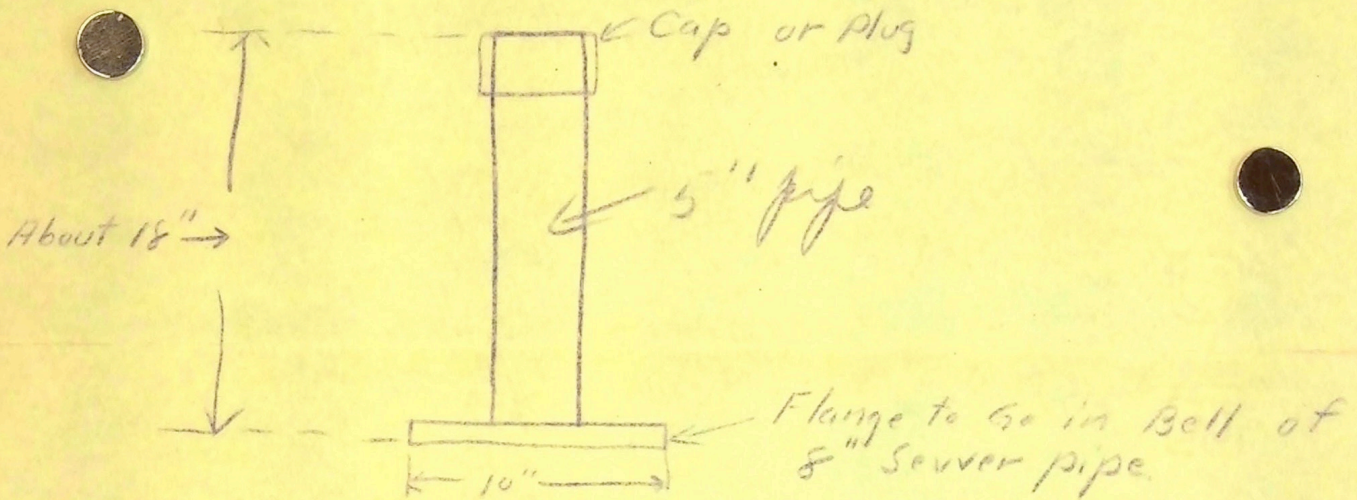
To be returned when Work is Finished.

Draughtsman _____

Examiner _____

Painesdale Mich., Sept. 7 1909

Stack for School Sewer



Make one.

Adams Township, MI

CHAMPION COPPER CO.

Draughtsman H. Miller

Sketch No. _____

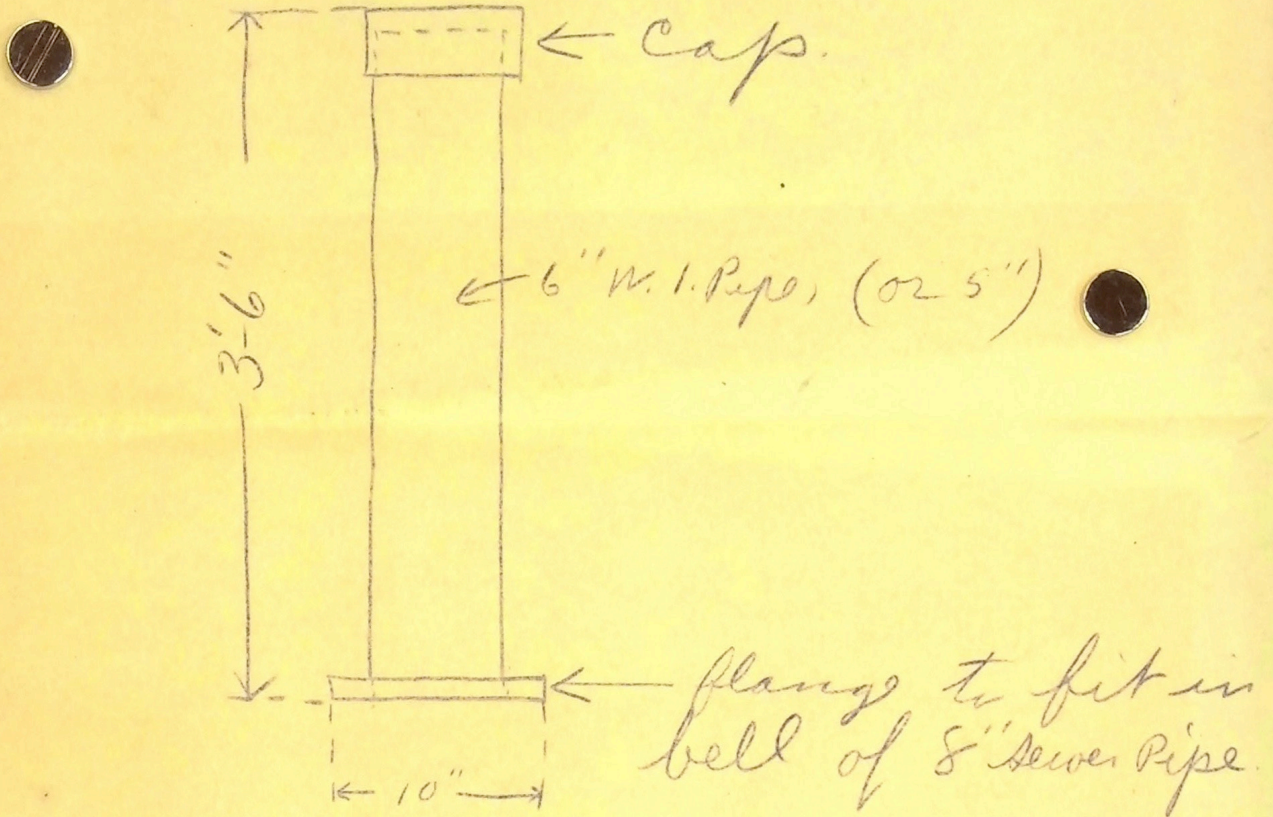
DRAWING ROOM SKETCH.

Examiner _____

To be returned when Work is Finished.

Painesdale Mich., July 30 1909

Flush stack for High School Sewer.



Make one.

H. Miller

REQUISITION No. _____

DRAWN BY *Mercer*

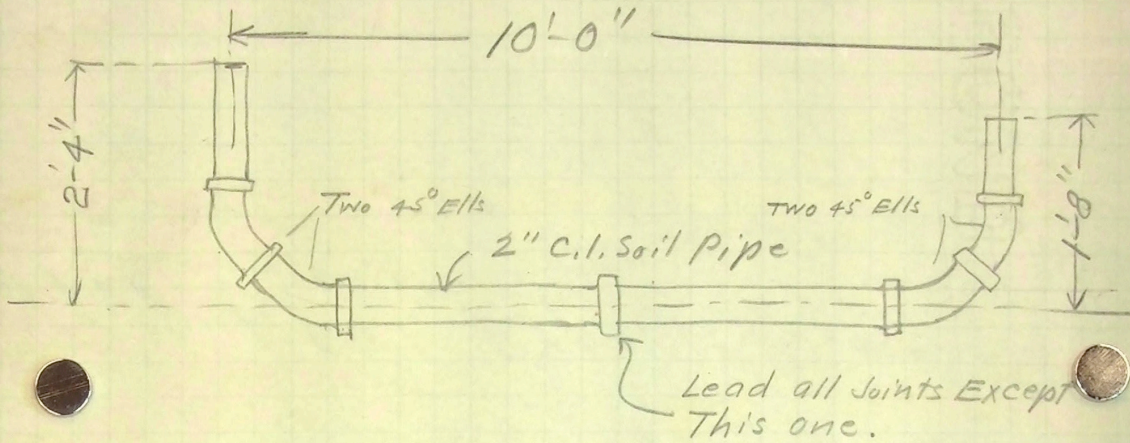
CHAMPION COPPER CO.

PAINESDALE, MICH.

CHECKED BY _____

DATE *Aug 21* 1922

SUBJECT *Atlantic School Drain Pipe*



*Boiler Pit Drain.
Make 1*

20 ft 4\"/>

13 ft 2\"/>

*Shipped to
Atlantic by
White Truck
Aug 23/22*

OK Aug 22-22

O'Radwan

No. _____

CHAMPION COPPER COMPANY

Supply Clerk: _____

Aug 21

1922

Deliver the following material.

Amount	Description	Chargeable to
<i>20</i>	<i>lin. ft. 4\"/> </i>	<i>Atlantic School</i>
<i>1</i>	<i>4\"/> </i>	
<i>1</i>	<i>2\"/> </i>	
<i>5</i>	<i>pieces 2\"/> </i>	

M. Mercer

NOTES ON CONCRETE WALKS

PAINESDALE HIGH SCHOOL

1. Excavation was made about 1 foot deep
2. Cinders spread about 7" deep and wet down
3. Forms made of 2" x 4" lumber, fastened to stakes, placed in position and braced.
4. 1:3:5 concrete, not too wet, placed flush with top of forms, and tamped.
5. Dry Cement sprinkled on concrete.
6. Finishing coat, 1:2½ cement and coarse sand mixed quite wet, placed and swept off with straight edge.
7. Sprinkled with dry cement.
8. Smoothed with wooden float.
9. " " iron "
10. Cut into slabs with small trowel.
11. Sprinkled with marble dust
12. Surface gone over with a lug roller.

BBBBBBBBBBBBBBBBBBBBBBBBBBBBBBBBBBBB

Rock, 50¢ per yd. Sand 75¢ per yd. } furnished by
Cinders free } Champ Cop. Co.

Contract price 16¢ per sq. ft.
A. W. Anderson, of Houghton, was contractor.

ENGINEER'S OFFICE

F. P. No.

REQUISITION No.

DRAWN BY

Meiser

CHAMPION COPPER CO.

PAINESDALE, MICH.

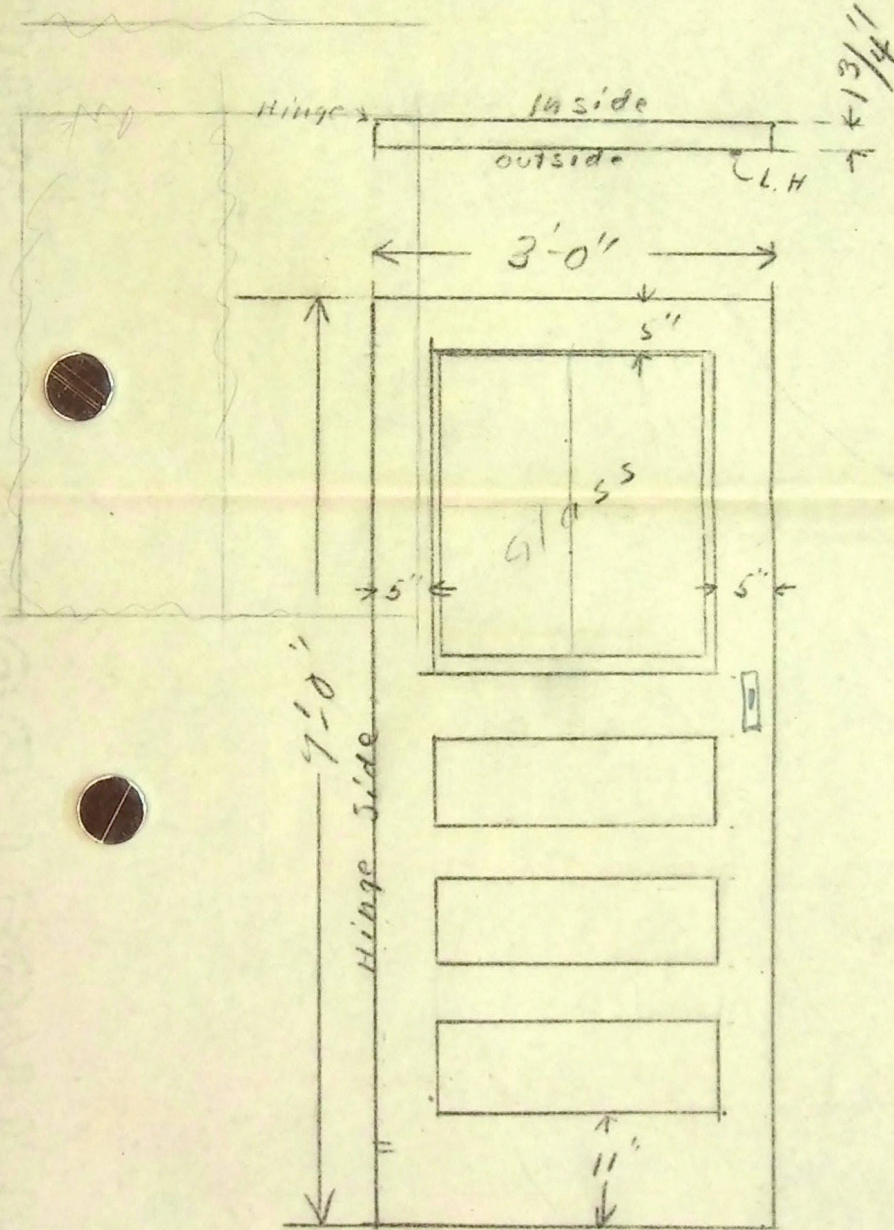
CHECKED BY

school

DATE *Nov. 3* 191*3*

SUBJECT

Trimountain Fire Escape Door



Outside View,

REQUISITION No.

ENGINEER'S OFFICE

F. P. No. 1524-J

DRAWN BY W. C. W.

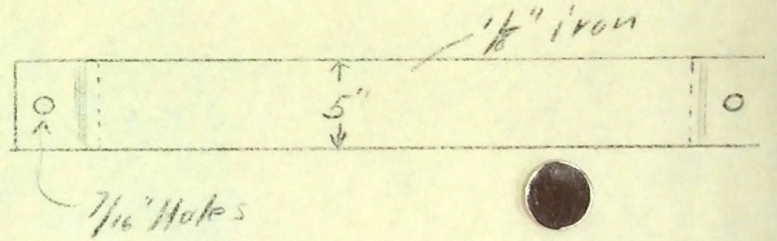
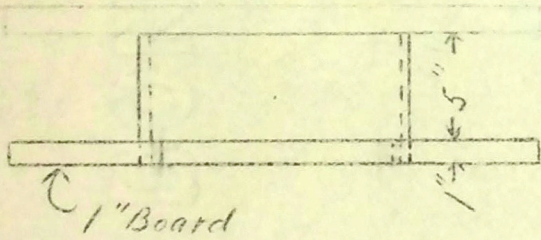
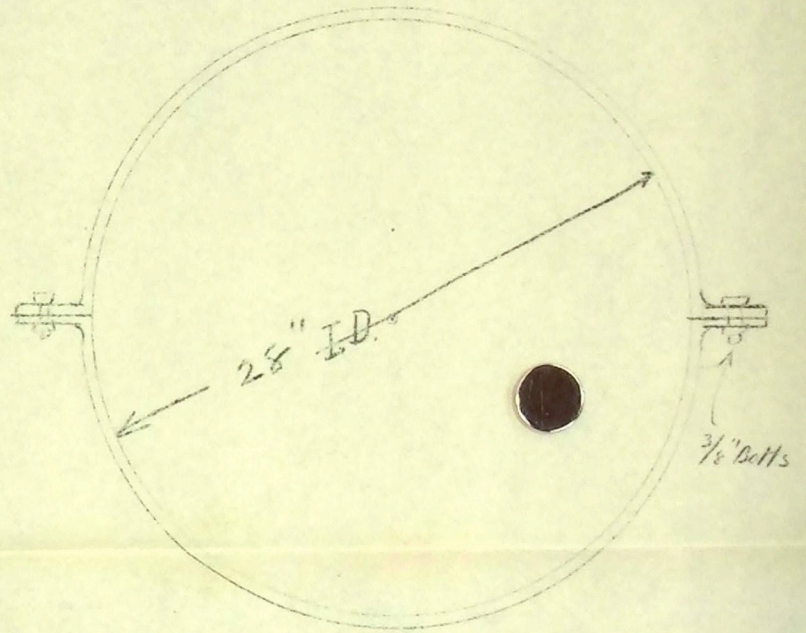
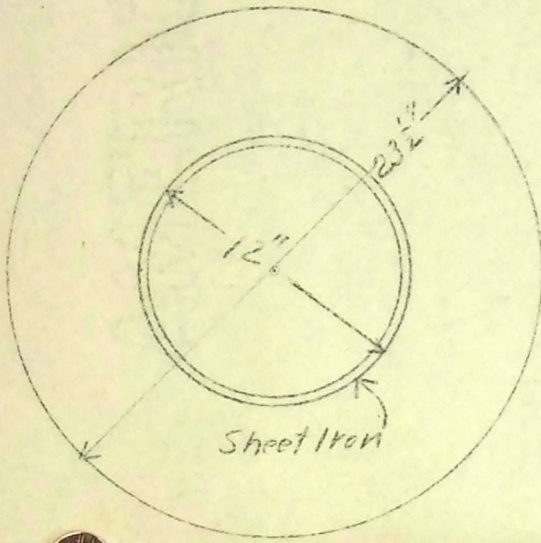
CHAMPION COPPER CO.

PAINESDALE, MICH.

CHECKED BY

DATE Aug 18 1912

SUBJECT Catch Basin Top Forms for Grade School



Inside form for
Catch Basin Top
Make 4

Outside Form for Top of
Catch Basin
Make 1, w.l.

ENGINEER'S OFFICE

F. P. No. 15247

REQUISITION No.

DRAWN BY

Mercer

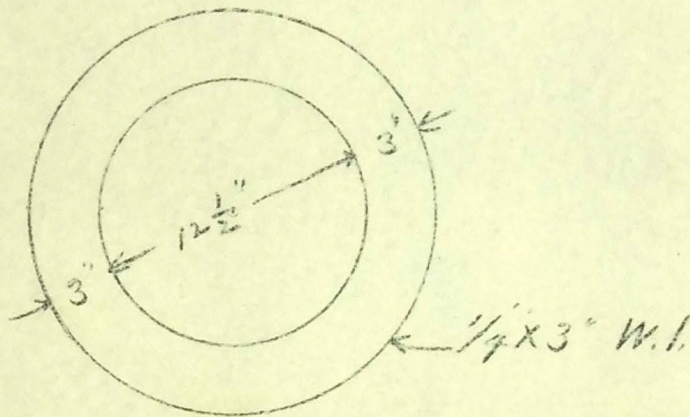
CHAMPION COPPER CO.

PAINESDALE, MICH.

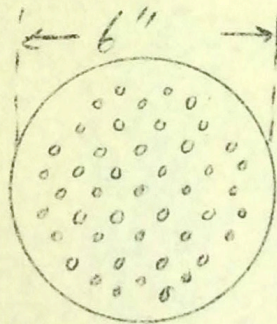
CHECKED BY

DATE Aug 18 1922

SUBJECT Atlantic School Drain



Ring for Top of Catch Basin
Make 1



1/4" plate, w. l.
3/16" Holes

Top for
Boiler Pit Drain
Make 1