

Adams Township, MI

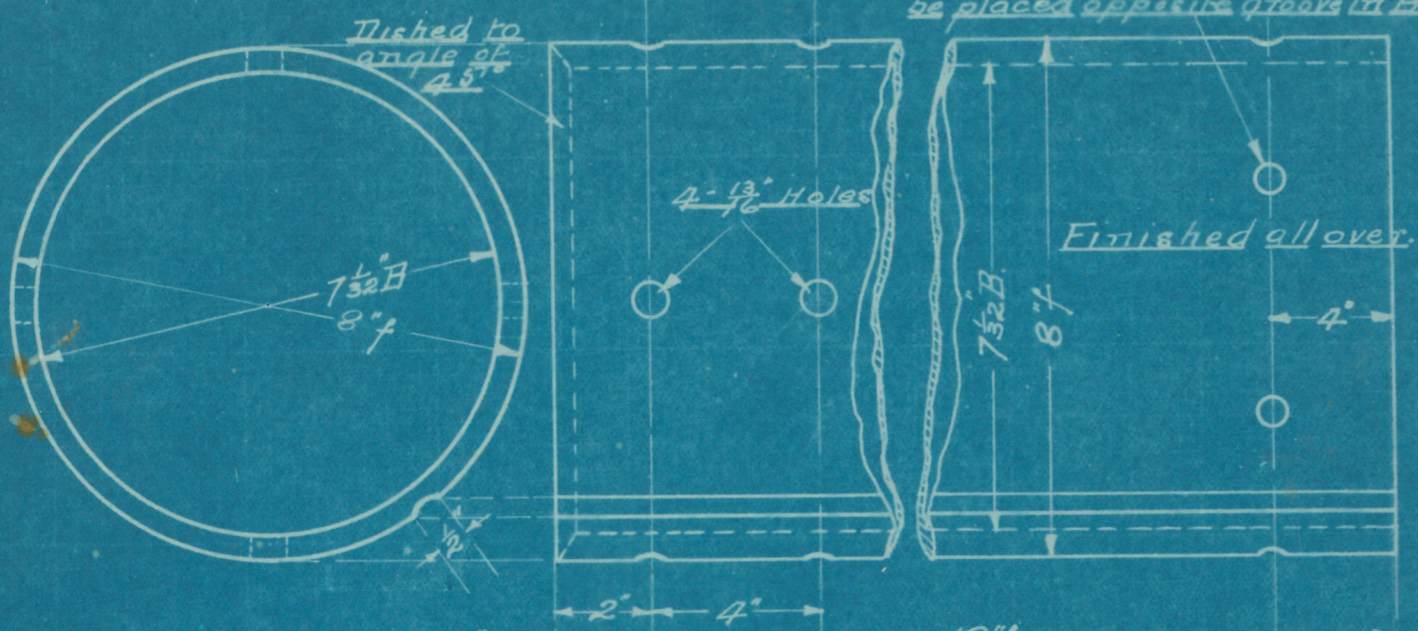
CHAMPION COPPER COMPANY

SHOP SKETCH

Subject: Brass Bushing for Angle Sheave Bearings C Hoist Champion Mine

Date: Sept 11-11

6-5/8" drilled Holes to be placed opposite grooves in Box



Cut Grooves 1/2" wide X 1/16" deep for full length of Bushing

Made by *Et.*

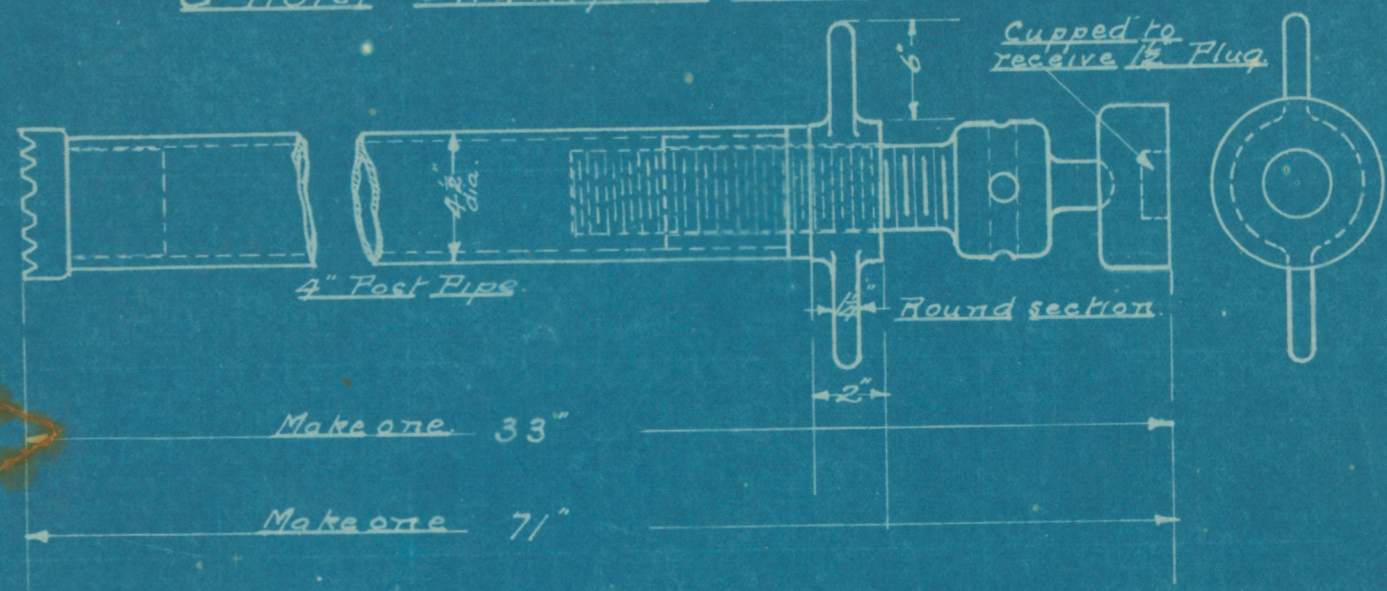
KEEP THIS SHEET CLEAN AND RETURN SAME TO SHOP FOREMAN WHEN WORK IS COMPLETED

CHAMPION COPPER COMPANY

SHOP SKETCH

Subject: Jack for Angle Sheave Bearings C Hoist Champion Mine

Date: Sept 28-11.



Make one 33"

Make one 71"

Made by *Et.*

KEEP THIS SHEET CLEAN AND RETURN SAME TO SHOP FOREMAN WHEN WORK IS COMPLETED

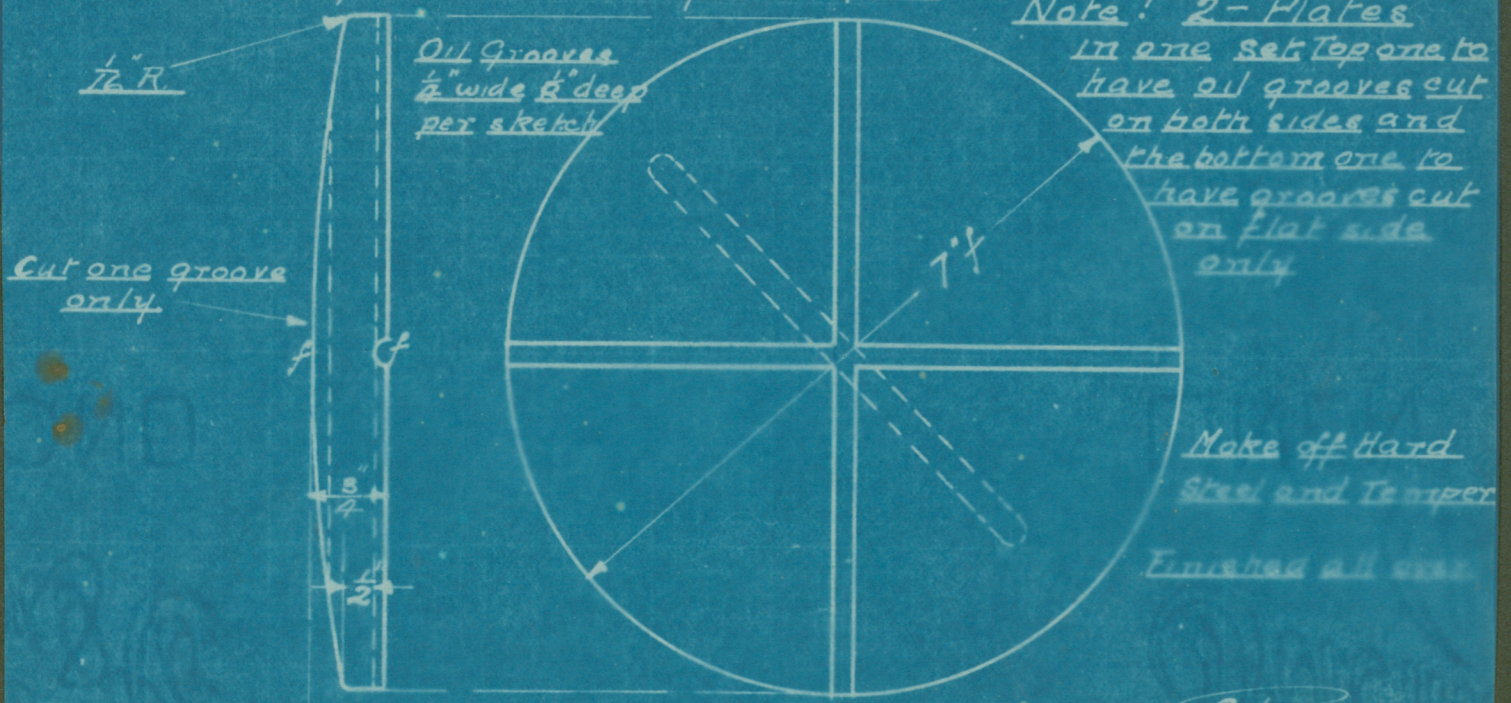
CHAMPION COPPER COMPANY

SHOP SKETCH

Subject: Hard Steel Plates for Angle Sheave Bearings C Hoist Champion Mine

Date: Sept 11-11.

Note! 2- Plates in one set Top one to have oil grooves cut on both sides and the bottom one to have grooves cut on flat side only



Oil Grooves 1/2" wide 1/8" deep per sketch

Cut one groove only

Make off Hard Steel and Temper

Finished all over

Made by *Et.*

KEEP THIS SHEET CLEAN AND RETURN SAME TO SHOP FOREMAN WHEN WORK IS COMPLETED