

Adams Township, MI

Order No. 70

F.P. 1526

# DRAWING OFFICE SKETCH.

To be returned when Work is Finished.

## CHAMPION COPPER CO.

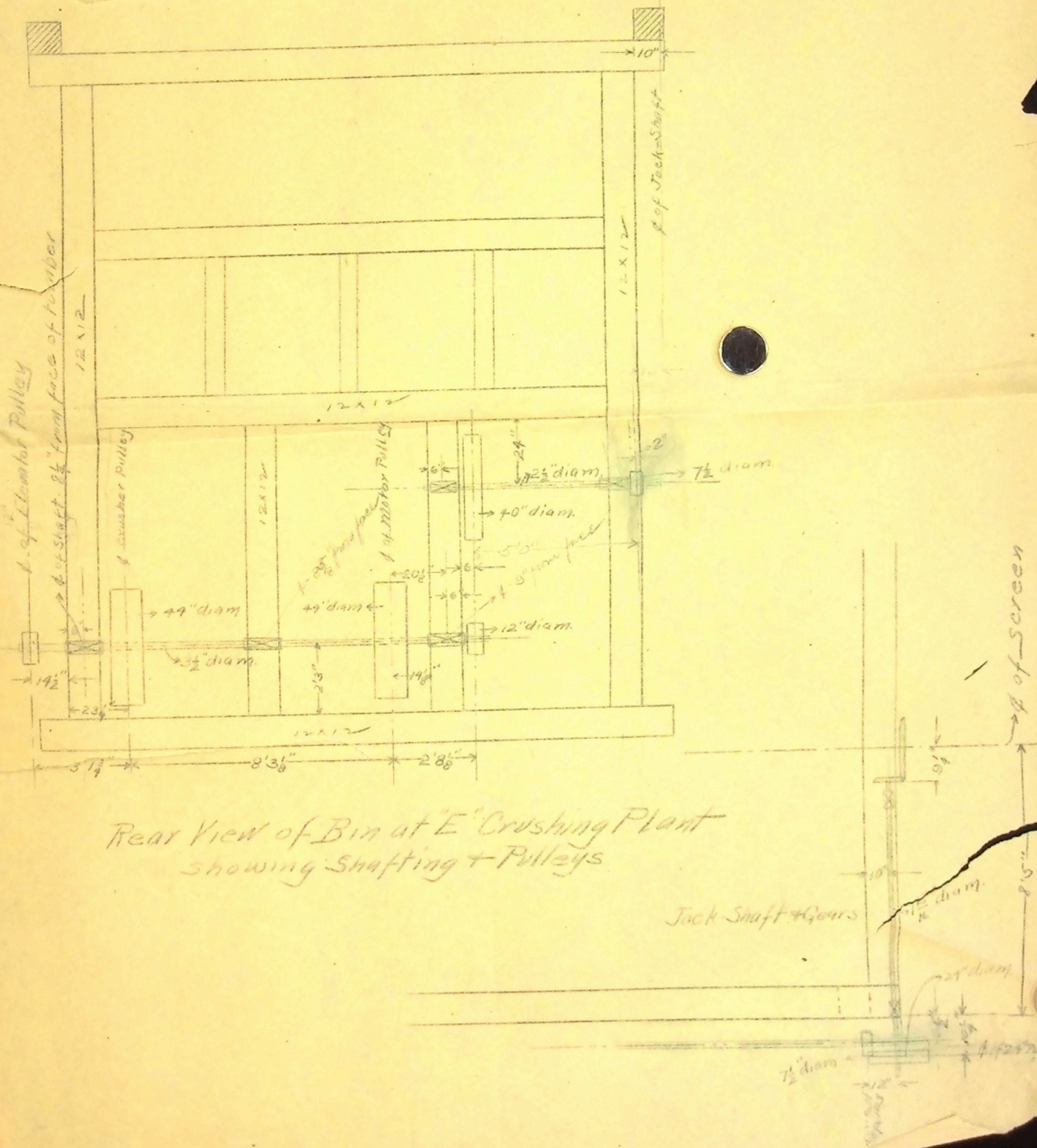
Copy Book \_\_\_\_\_ Page \_\_\_\_\_

Draughtsman T.H. Bennett

Examiner H.T.M.

Painesdale, Mich., Sept 21, 1906

*Indexed*



Rear View of Bin at E Crushing Plant showing Shafting + Pulleys

Jack Shaft + Gears

4 of Screen



DRAWING OFFICE SKETCH.

Adams Township, MI

Order No. 65

F.P. 1526

Indeped.

To be returned when Work is Finished.

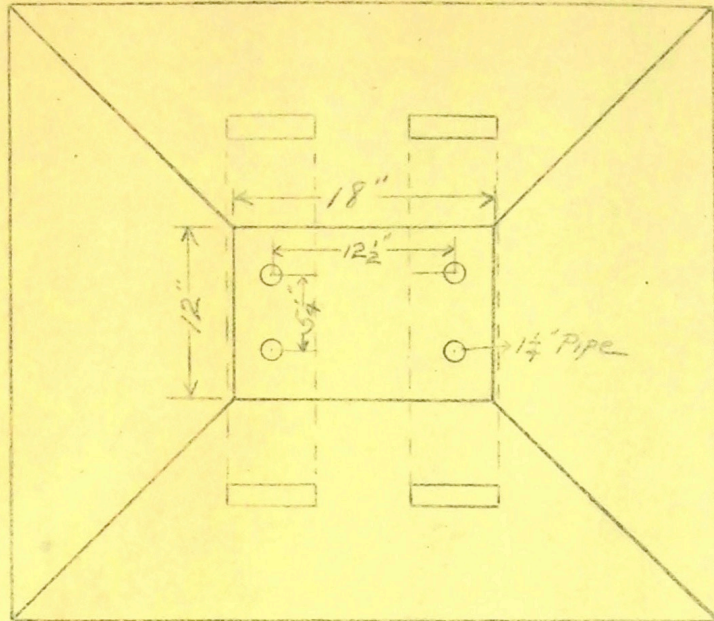
CHAMPION COPPER CO.

Copy Book \_\_\_\_\_ Page \_\_\_\_\_

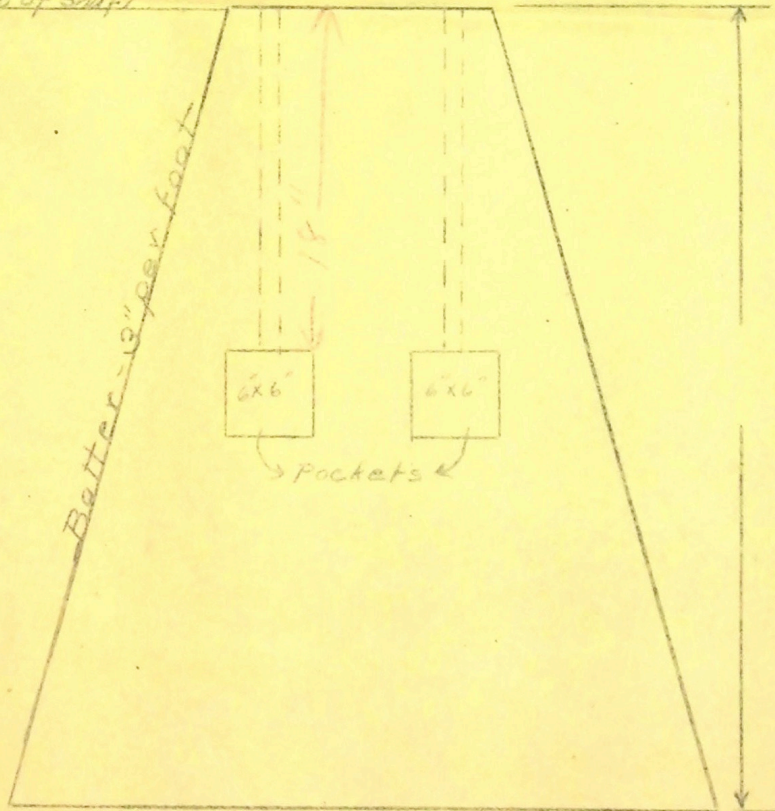
Draughtsman T.H. Bennett

Examiner H.T.M.

Painesdale, Mich., August 18, 1906



Top - 4 1/2" below  $\phi$  of Shaft



Foundation for Pillow-Block  
on "7 1/2" K" Gyroatory Crusher  
at  
"E" Rock-Crushing Plant



Adams Township, MI

# DRAWING OFFICE SKETCH.

Copy Book \_\_\_\_\_ Page \_\_\_\_\_

Order No. 64  
F.P. 1526

To be returned when Work is Finished.

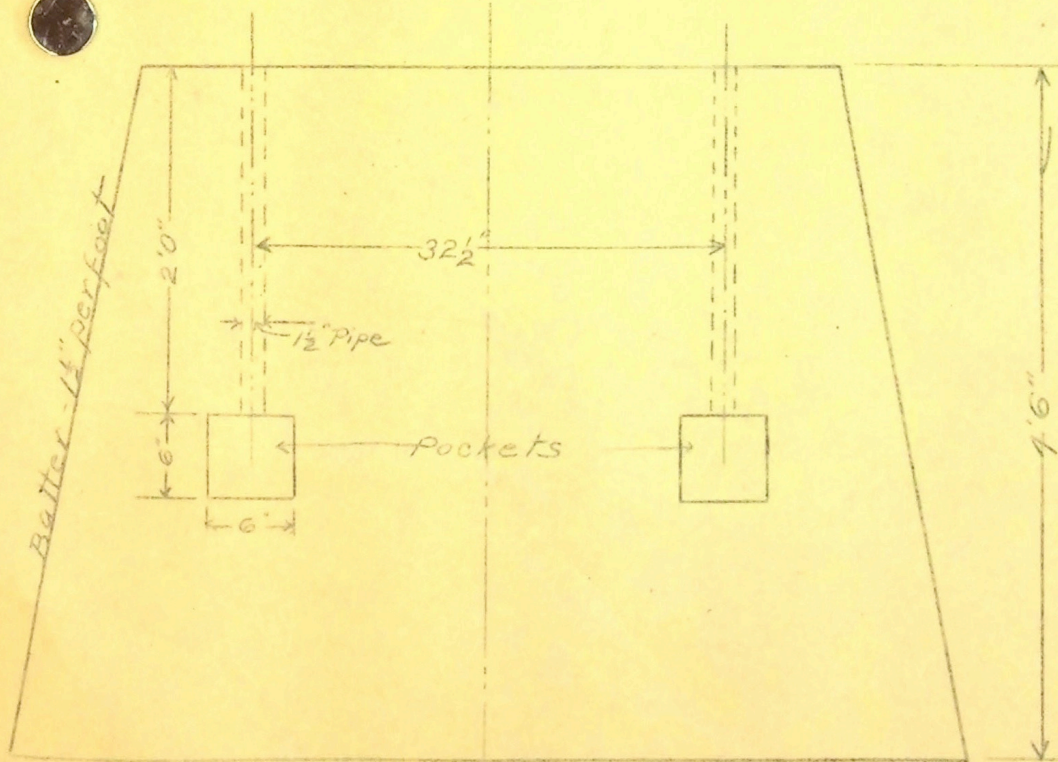
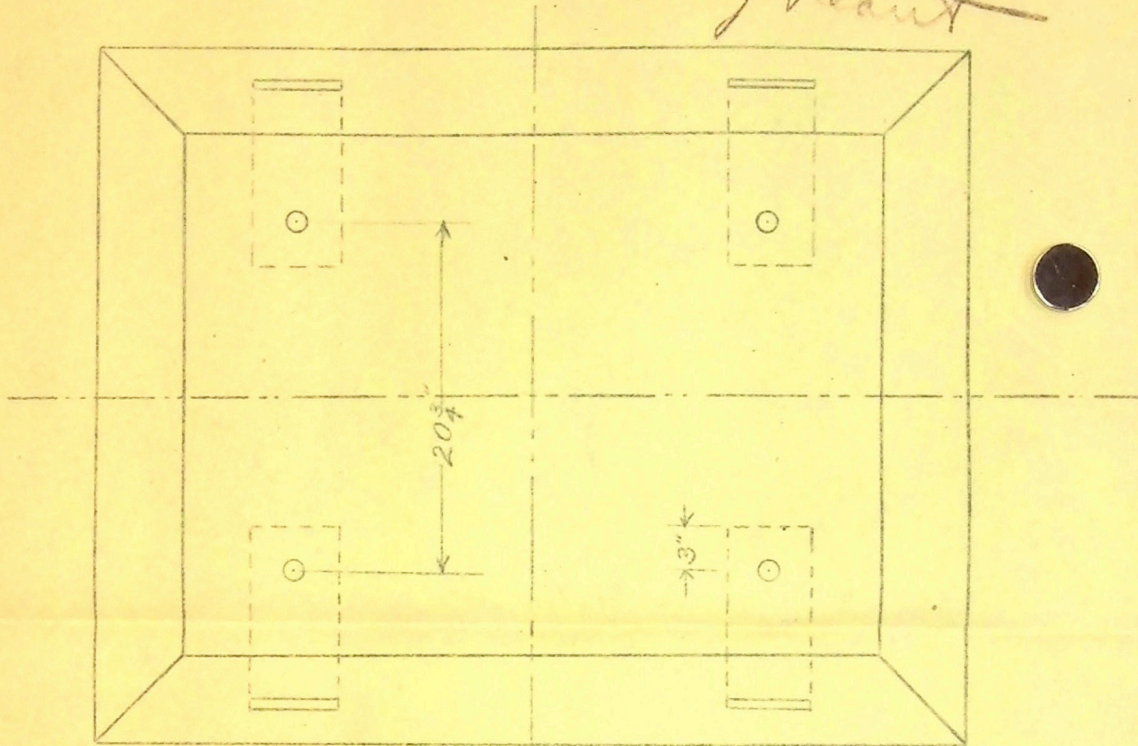
Draughtsman T.H. Bennett

## CHAMPION COPPER CO.

Examiner H.T.M.

*Ordered:*

*Corrected at "E" Crushing Plant* Painesdale, Mich., Aug 18, 1906



*Concrete Foundation  
for  
50 H.P. Motor  
(use figures)*

*Batter - 1 1/2\"/>*



"E" Brushing plant.

Revolving screen.

middle section, =  $1\frac{1}{4}$ " holes, 6' long,  
made of 2 plates, 96" x 36",  $\frac{1}{2}$ " margin  
on all sides, dia =  $29\frac{3}{4}$ " inside,  
plates about  $\frac{3}{16}$ " thick.