

Adams Township, MI

Requisition No. _____

ENGINEER'S OFFICE

F. P. No. 1635-A

Drawn by Mercer

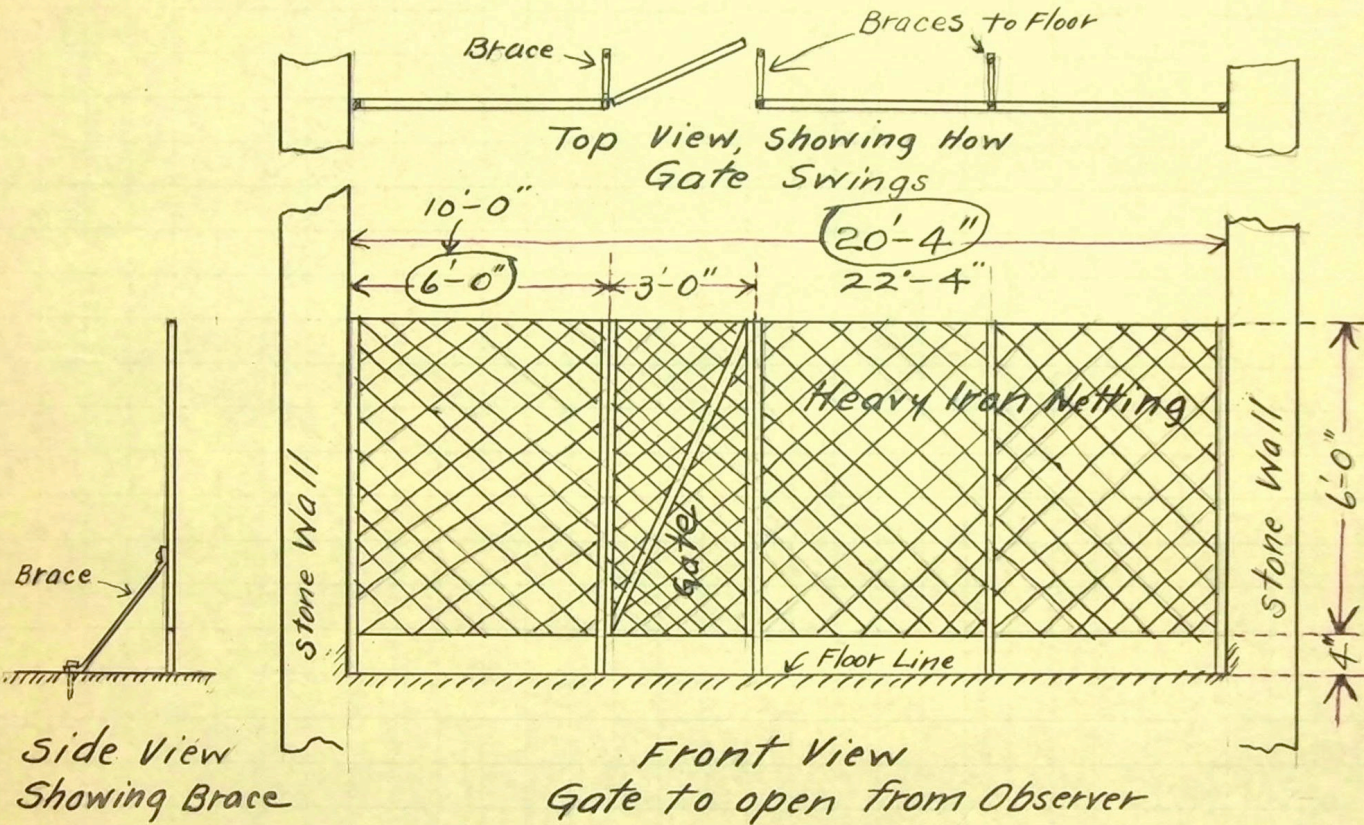
CHAMPION COPPER CO.

PAINESDALE, MICH.

Checked by _____

Date Oct. 8, 1915

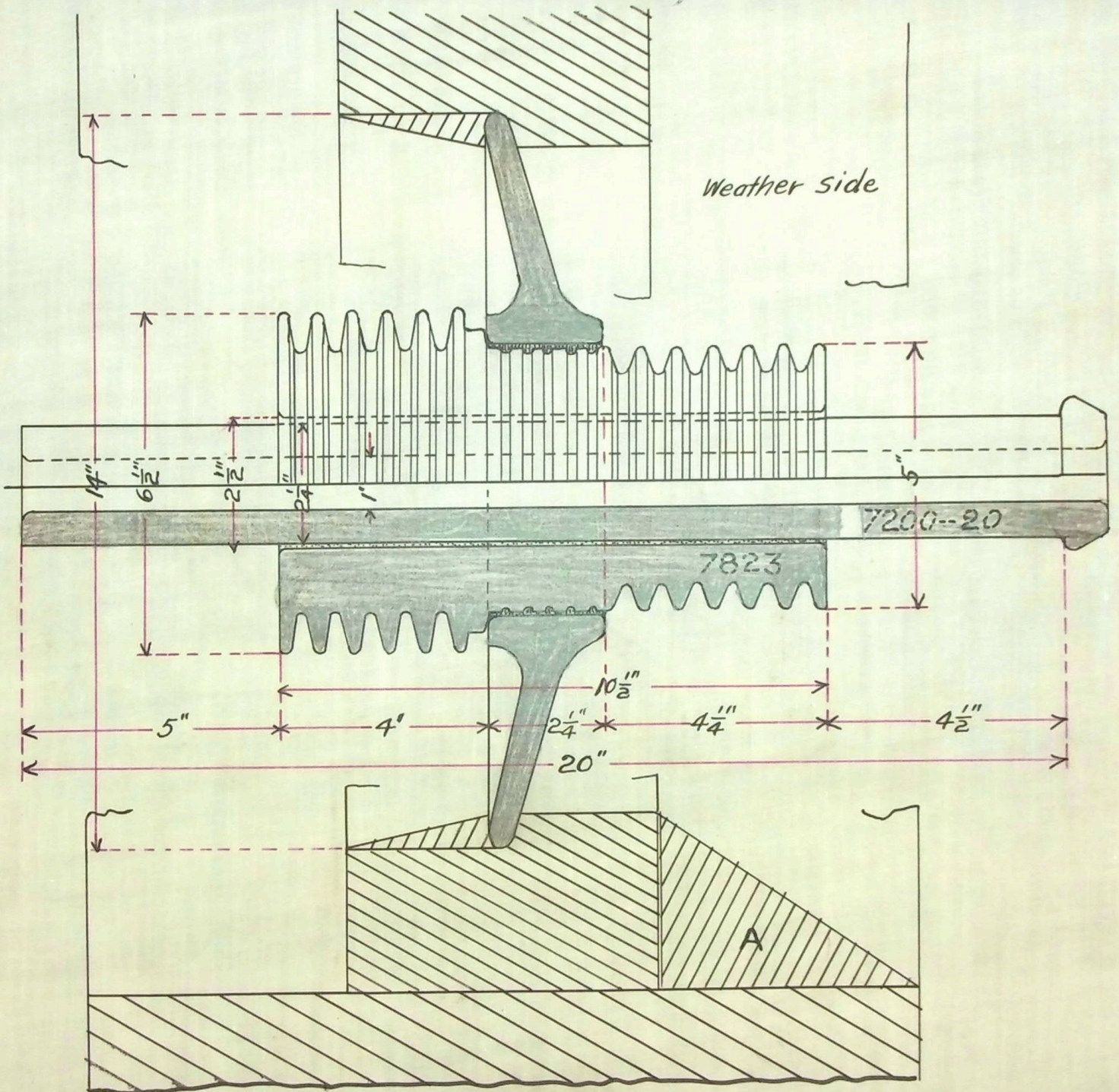
SUBJECT Guard Fence for Transformer House, Baltic Mill.



Dimensions in ovals are for stamp mill buildings
" outside " " mine " "

W.A.R. 10/25/15

Gate to have Norwalk lock, to fit Key #5371 A



NOTE: This design assumes that the Weather Side is protected by projecting eaves or hood.
 Triangular Prism "A" is placed on lower side to prevent birds nesting.

SPECIAL WALL DISKED-BUSHING
 FOR 22000 TO 33000 VOLT LINES
 R THOMAS & SONS. CO.,
 E LIVERPOOL & NEW YORK.
 Scale, 4 1/2" = 1'-0" OCT. 22, '08.

Adams Township, MI
Requisition No.

ENGINEER'S OFFICE

F. P. No. 1435-A

Drawn by Mercer

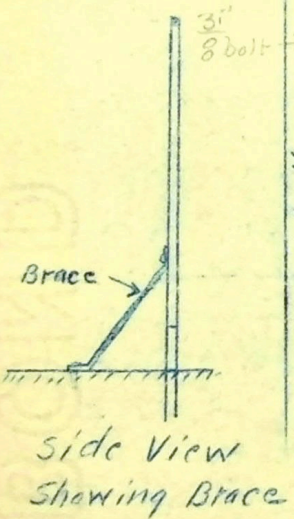
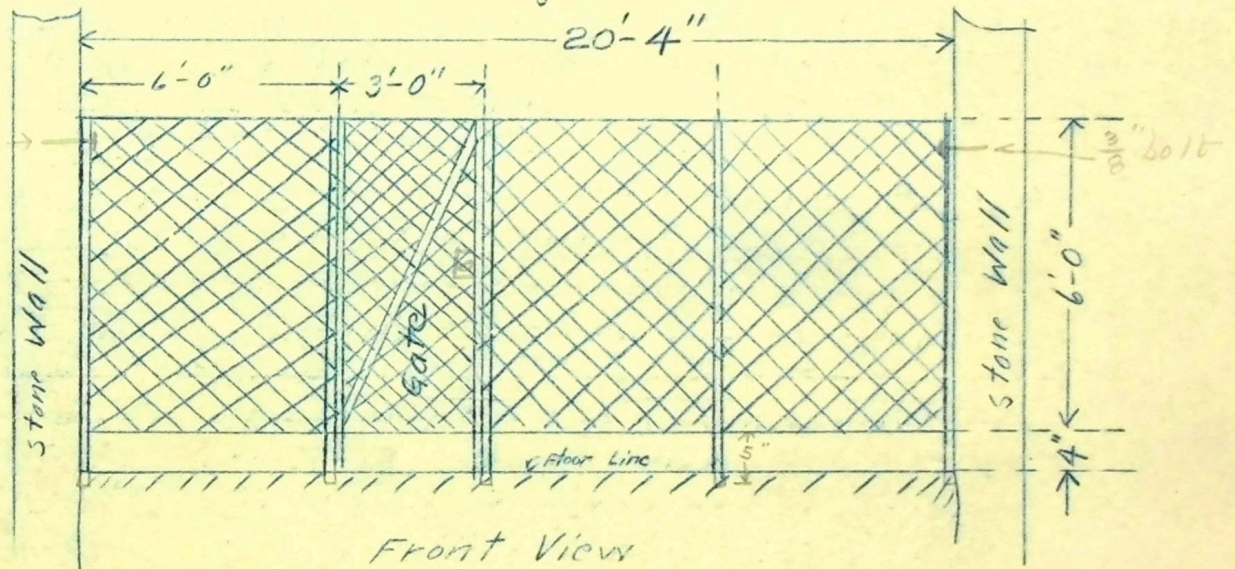
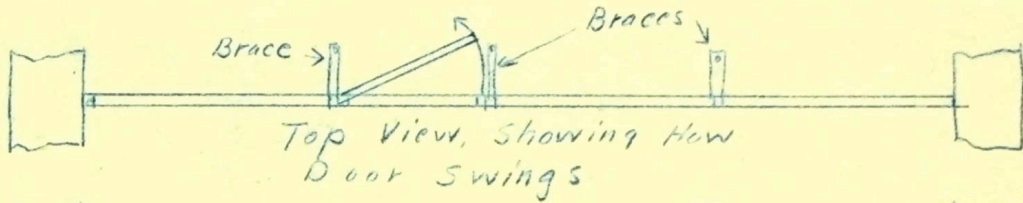
CHAMPION COPPER CO.

PAINESDALE, MICH.

Date Oct 8 1912

Checked by

SUBJECT Guard Fence for Transformer House, Baltic Mill



Gate to open Away from Observer
and to have Gate lock + 2 Keys

Adams Township, MI

Requisition No. _____

ENGINEER'S OFFICE

F. P. No. _____

Drawn by *Mercer,*

CHAMPION COPPER CO.

PAINESDALE, MICH.

Checked by _____

Date *Dec. 20* 191*5*

SUBJECT *Blocks for Sub-station.*

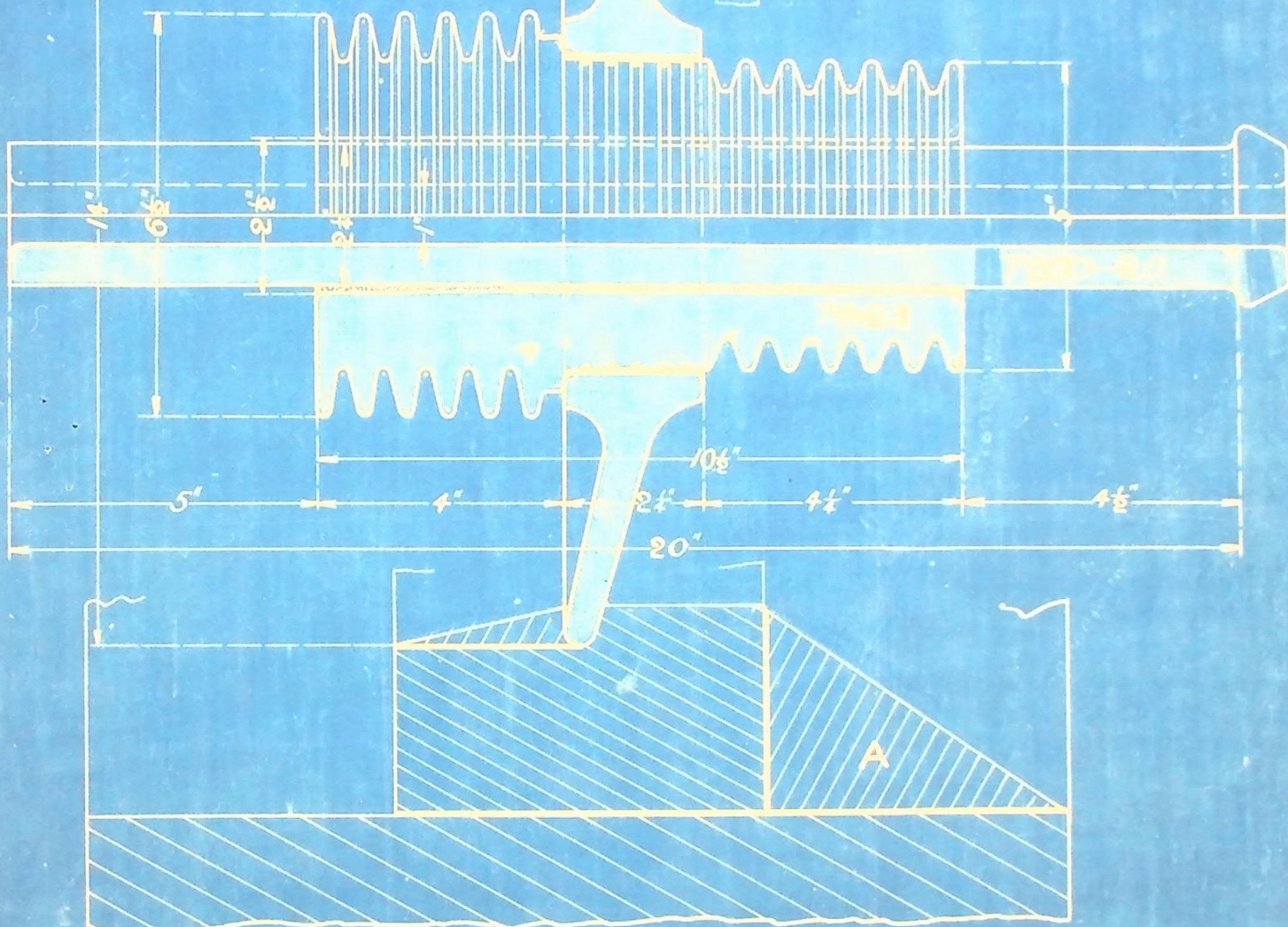
- 1882 Hollow Rock Faced Blocks (Regular)
- 60 Corner Blocks, Smooth Face
- 60 Bi-Corners Rock "
- 74 Full Blocks, Smooth Face } around Doors & Windows
- 74 Half " " " }

- 7 Window Sills } colored on face
- 7 " Caps }

H.M.

Weather Side

170,000 VOLTS



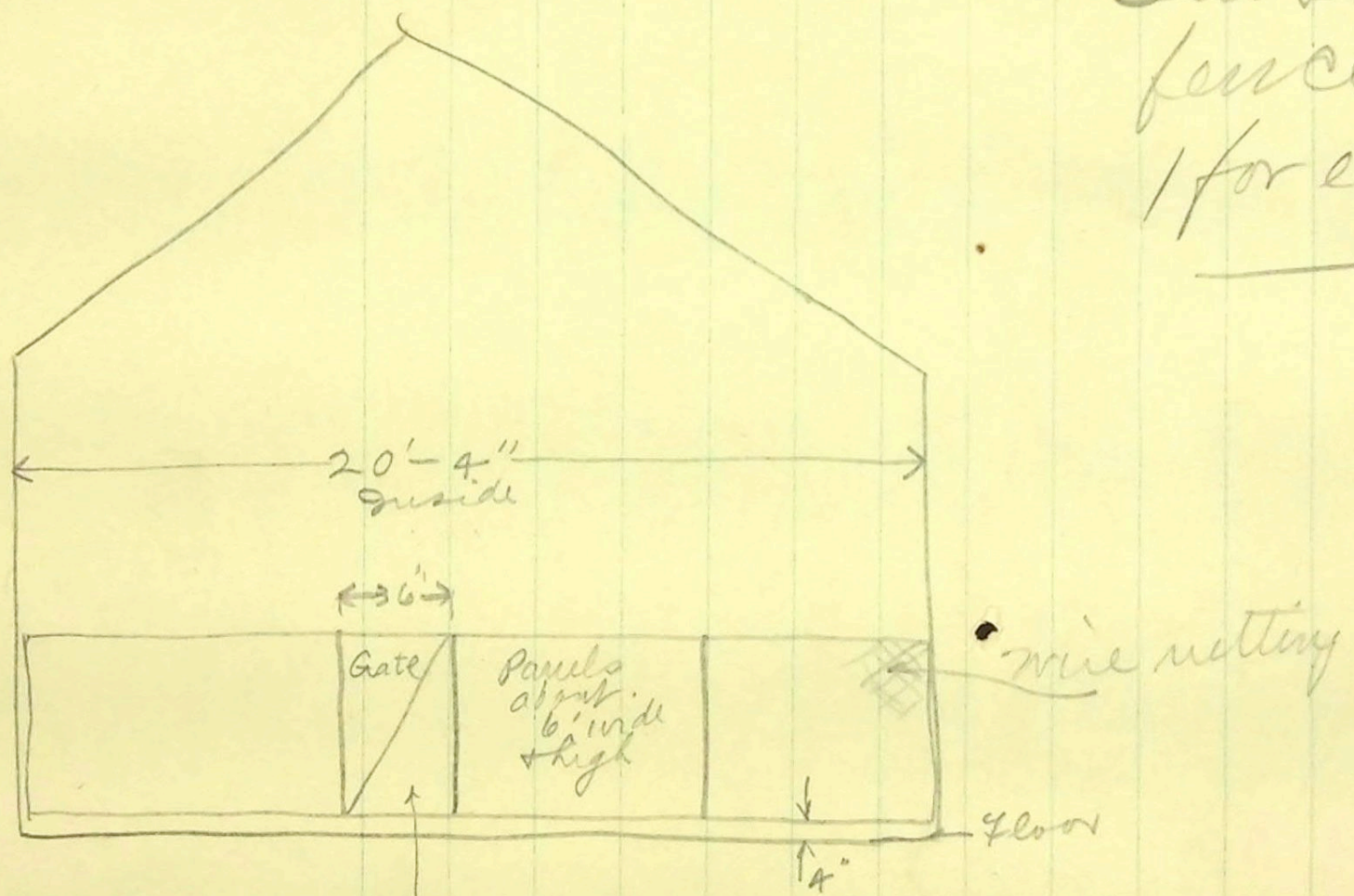
NOTE: This design assumes that the Weather Side is protected by projecting eaves or hood.
Triangular Prism "A" is placed on lower side to prevent birds nesting.

SPECIAL WALL DISKED-BUSHING
FOR 22000 TO 33000 VOLT LINES
R. THOMAS & SONS CO.,
E. LIVERPOOL, N. Y.
SCALE: 4 1/2" = 1" OCT 22 1900

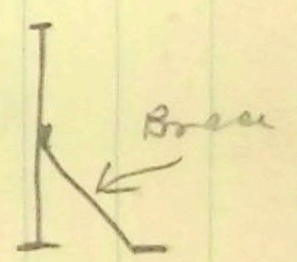
DRAWING

CAT. NO. 8305

Substation wire
fence.
1 for each sub.



Locate where ever is
best place



CHAMPION COPPER CO.

STAMP MILL

.....

OFFICE OF SUPERINTENDENT

DRAWING ROOM SKETCH

FREDA, MICH.,

OCT 11

1902

Draughtsman _____

Checked _____

Req. No. _____

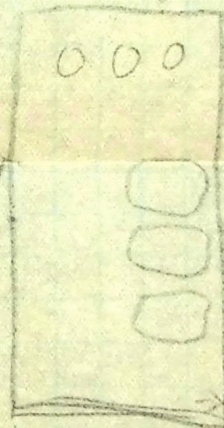
Sketch No.

F.P. 1635-B

Transmountain Sub Station
Regular print reversed, now on other side &
transformers moved over.

Inward Link

High Tension



Original given address
10/10/12

Pump H

High Tension
Conduit
to standing
transformer

Stamp
mill

Boiler
House

m.R.

Requisition No. _____

ENGINEER'S OFFICE

F. P. No. _____

Drawn by Mercer,

CHAMPION COPPER CO.

PAINESDALE, MICH.

Checked by _____

Date Dec, 20 1915

SUBJECT Blocks for Sub-station.

- 1882 Hollow Rock Faced Blocks (Regular)
60 Corner Blocks, Smooth Face
60 Bi-Corners Rock "
74 Full Blocks, Smooth Face } around Doors & windows
74 Half " " " "
7 Window Sills } colored on face
7 " Caps }

H.M.

Requisition No. _____

ENGINEER'S OFFICE

F. P. No. _____

Drawn by Mercer

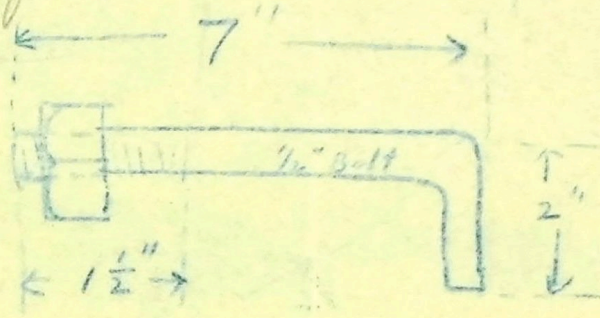
CHAMPION COPPER CO.

PAINESDALE, MICH.

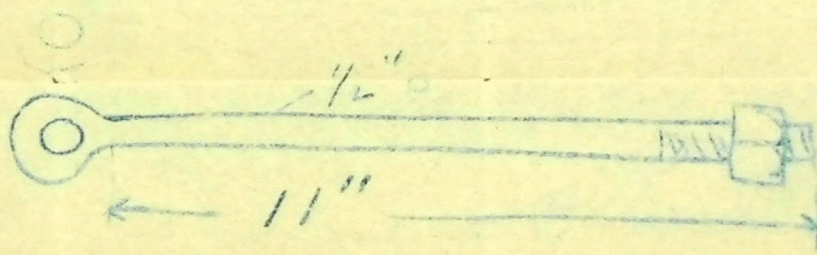
Checked by _____

Date Nov. 24 1915

SUBJECT Bolts for sub station



Z Bar Bolts
make ~~4~~ 66



eye Bolts
make 7

one set like this ordered for Transit

Baltic Mining Co.
~~COPPER RANGE ELECTRIC CO.~~
Stamp Mill Pole Line.

Draughtsman W. A. R.

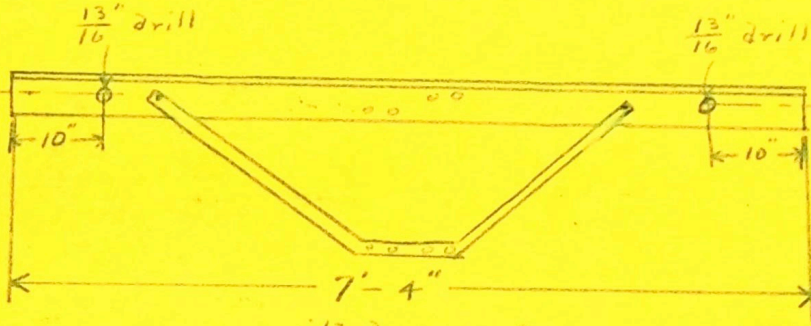
Sketch No. F.P. 1635-B

SCALE None

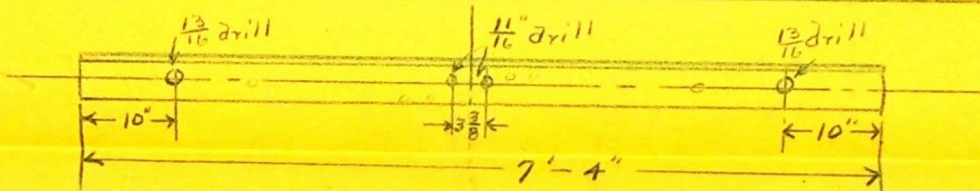
Examiner _____

Special double cross arms.

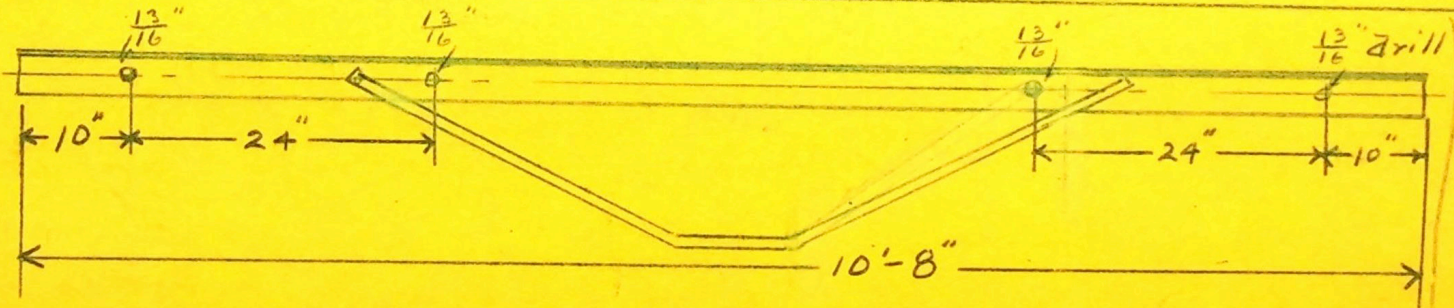
Painesdale, Mich., Oct. 8th 1912



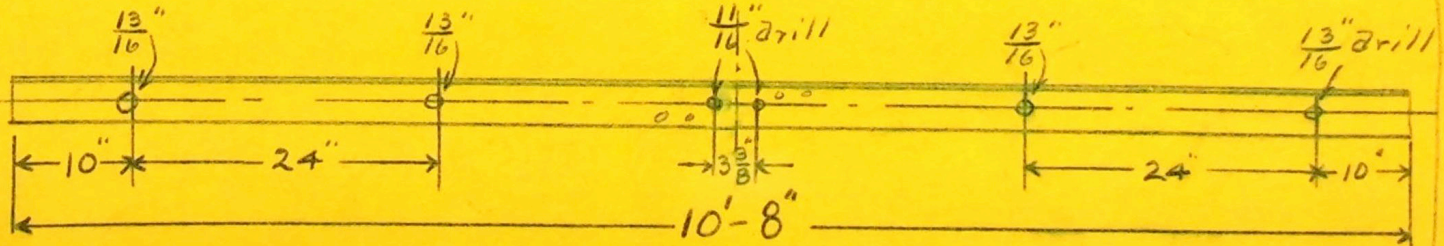
On 6 of the arms now made up with braces, drill the 2 additional $\frac{13}{16}$ holes as shown above.



On 6 of these arms, drill the 4 additional holes as shown. No braces.



On 6 of the arms now made up with braces, drill the 4 additional $\frac{13}{16}$ holes as shown above.



On 6 of these arms, drill the 6 additional holes as shown. No braces.

Drilling dimensions are meant to be to centers of holes in all cases.

Tie these together in pairs for shipment.

Tie these together in pairs for shipment