

Pay Office Waiting Room

Baltic Mine Office

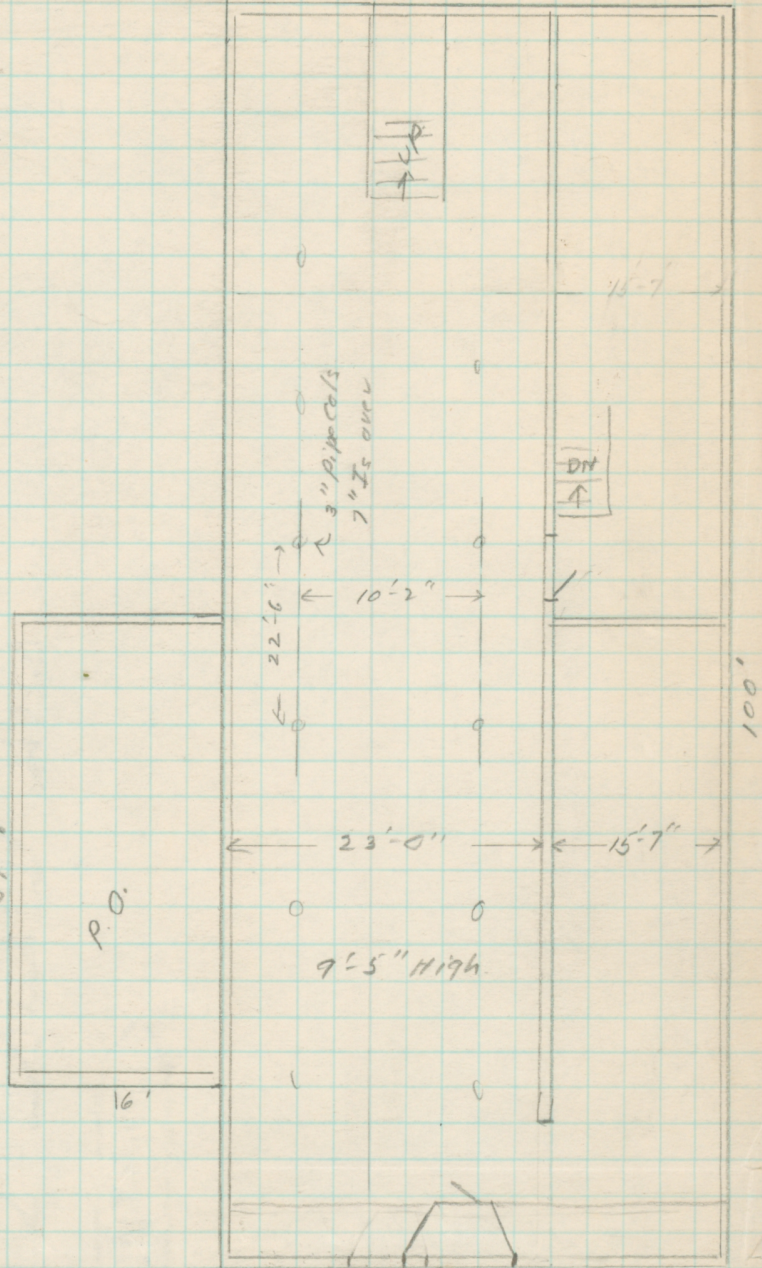
Scale 1/4" = 1'

TRIMOUNTAIN STORE
4-15-43

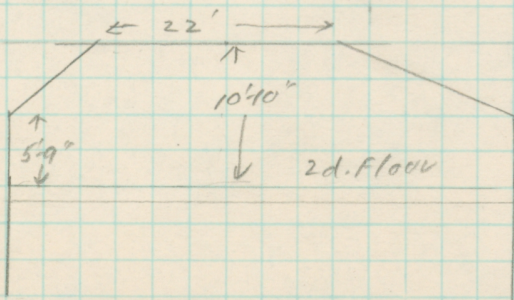
H. J. Meier
40'



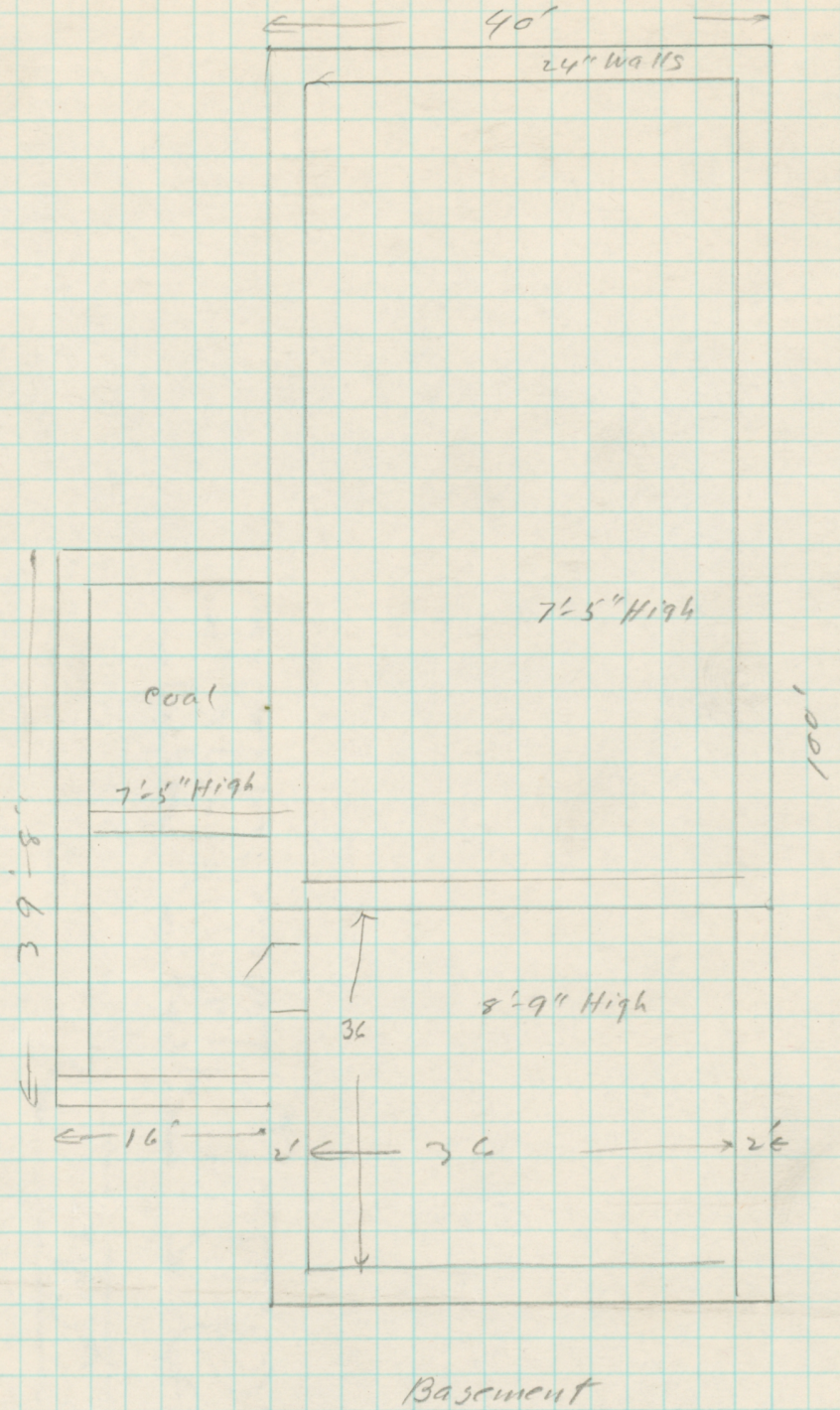
2d. Floor



1st Floor
2x8 Joist 16" Ct.
Maximum Span = 12 ft.



Front Elevation



Manager's
Desk.

Catalogue
File.

Pigeon Hole
Case.

Chair.

Order file
and
letter file.

Table
6' x 3'

Typewriter Desk
54" x 32"

Chair

Floor plan showing arrangement of
furniture for new office in connection
with Trimountain store.
Size of room, 16' x 21'

Chair.

Chair

Office

Shelfboard for
Storage of samples.

High desk
for clerk.

Door

CHAMPION COPPER COMPANY.

ADDRESS REPLY TO
CHAMPION COPPER CO.
R. R. SEEBER, CHIEF ENGINEER

L. L. HUBBARD, GENERAL MANAGER.
R. R. SEEBER, CHIEF ENGINEER.

PAINESDALE, MICH. *June 6* 190*6*

Cost of foundation. Addition to Trimountain Store.

30 1/4 days Mason Labor	\$85.50	- - 2.59	per cu. yd.
10 3/4 " Surface " , Excavating	19.78	.60	"
1 " " " Selecting rock	1.84	.06	"
11 " Teaming & Swampers, rock & sand	25.14	.76	"
	<u>\$132.26</u>	4.01	"
Lime & Cement	39.65	1.20	"
One car sand	4.00	.12	"
Freight on sand	12.00	.36	"
	<u>187.91</u>	5.694	"

Supplies \$1.69 per cu. yd.

Heating Plant cost \$35.64

H. T. M.

Rubble masonry, 20" walls

Trimountain

Cost of Foundation - Addition to Store.

---:---:---

30 1/4 days Mason Labor	\$ 85.50	- 2.59 per cu. yd.
10 3/4 " Surface " , Excavating	19.78	- 0.60 " "
1 " " " Selecting rock	1.84	- 0.06 " "
11 " Teaming <i>Swampers</i> Rock & sand, etc.	25.14	- 0.76 " "
	<u>\$132.26</u>	- 4.01 " "
Lime & Cement	39.65	- 1.20 " "
1 car Sand	4.00	- 0.12 " "
Freight on Sand	12.00	- 0.36 " "
Total	\$187.91	- 5.694 " "

Supplies = 1.69 per cu. yd.