

11.825 - C.D.P. 5000 → →

Adams Township, MI

LAKE SHORE ENGINEERING CO.

WELCOMES

The
Marquette Range Engineers Club

Feb. 12, 1941



Seventy Five Years of Service

The management of the Lake Shore Engineering Company is happy to have as their guests the members of the Marquette Range Engineer's Club because our association dates back many years.

Close contact with you and the many problems in mining machinery that have been solved with your help places this company in a position where it can supply equipment meeting the demands of the present day mining requirements.

During our long experience we have been confronted with many unusual mining conditions and have always been able to design a type of equipment to successfully and economically do the work required. Our accumulated experience has always been available to you to aid you in the selection and design of equipment that will serve you best.

Although during the past seventy-five years the name of this company has been changed several times, the inception of the institution goes back to the year 1866. Two young men from the East, by name Osborne and Merritt, located in Marquette and were employed by the Bay de Noc and Marquette Railroad Company in their shops. Merritt was superintendent of the shops, and Osborne had charge of the foundry. They determined to start a foundry of their own. Plenty of work was secured from the mines and mills of that time and they prospered to such an extent that in 1873 a new building was erected for their use. It is the building now occupied by the Gannon Grocery Company and the Lake Superior and Ishpeming Railway Depot and offices. The building is located on the corner of Lake and Washington Streets in Marquette. The exterior of the building looks today as it did when originally built though the interior has had many changes.

In the year 1908 the plant which you are visiting today was built. You will agree the planners did a splendid job for the lay-out is still quite modernly planned. The buildings house a pattern shop, grey iron and brass foundry, machine shop, steel fabricating shop, power plant, engineering and office building. The buildings are located on a part of a twelve acre plot of ground.

The plant produces on order all types of mining and special machinery, grey iron, and brass castings. Much work is done for the automotive industry and special work for large Eastern companies. The major portion of our work, however, is to supply and serve the mining industry with machinery and supplies. It might be interesting to state that we have shipped mining machinery to practically every mining field in the world. The company has always produced quality equipment and has stood back of their product. A reputation for integrity has been built up and the name is well known in the mining field.

The men who operated the Company in the early days were of a high type and of good character. It was some of these men who were instrumental in erecting buildings of a substantial nature in the city. They had much to do with the shaping of the present city of Marquette. Messrs. Longyear, Shrias, Peter White, Jopling, Sherman, Begole were financially interested in the company.

This plant, for many years, was known as the Lake Shore Engine Works. It is today the manufacturing division of the Lake Shore Engineering Company. The Service and Supply Division and headquarters offices for both divisions, as you know, are located in Iron Mountain, Michigan.

In 1929, the controlling interest in the stock of the Lake Shore Engine Works was acquired by a group of men centering in Iron Mountain, Michigan, and since that time, they have had much to do with the management. In December, 1938, the consolidation was effected of the Lake Shore Engine Works of Marquette, and the Service and Supply Company, of Iron Mountain, Michigan.

This gave the new company, the Lake Shore Engineering Company, an opportunity, not only to manufacture mining machinery, but to service the same companies with mining supplies of all kinds. The Supply Division had worked up a large business with the mining companies, road building contractors, and municipalities, which, combined with the manufacturing, made an ideal arrangement. To give you some idea of the scope of our services, now, we serve the mining industry with:

Jackbits
Bethlehem Drill Steel
Air Hose
Ingersoll Rand Compressors
Carborundum Grinding Wheels
Electric Furnaces
Ingersoll Rand Scraper Hoists
American Cable Co. Slusher Rope
Simplex Electric Cable
Bins and Chutes
Air Cylinders

Underground Mine Cars
Dumping Mechanism at the Skip
Ore Skips
Man and Supply Cages
American Cable Co. Hoisting Cables
Heavy Pumping Installations
Large Ventilating Systems
Head Sheaves
Tramways, Tram Cars
Power Shovels

7
YEARS

The larger orders on which we are now working include:

SPECIAL MACHINERY

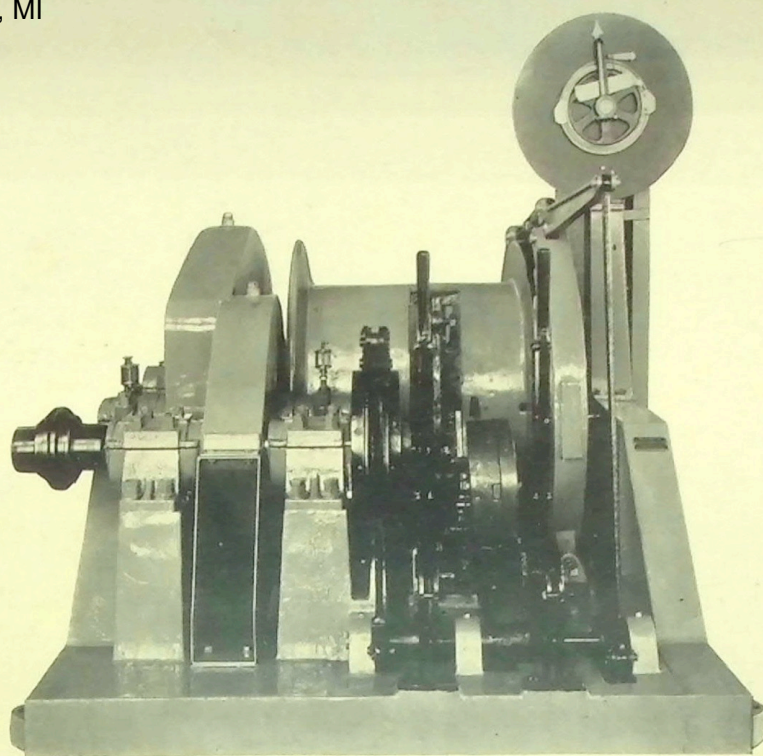
Griplock, Agripta banding tools
Glass plant machinery
Cast iron tar stills
Cast iron engine bases
Special mining cars
Special mix and weighing cars
Special machinery castings for fluid drive hydraulic couplings.
National defense work

MINING MACHINERY

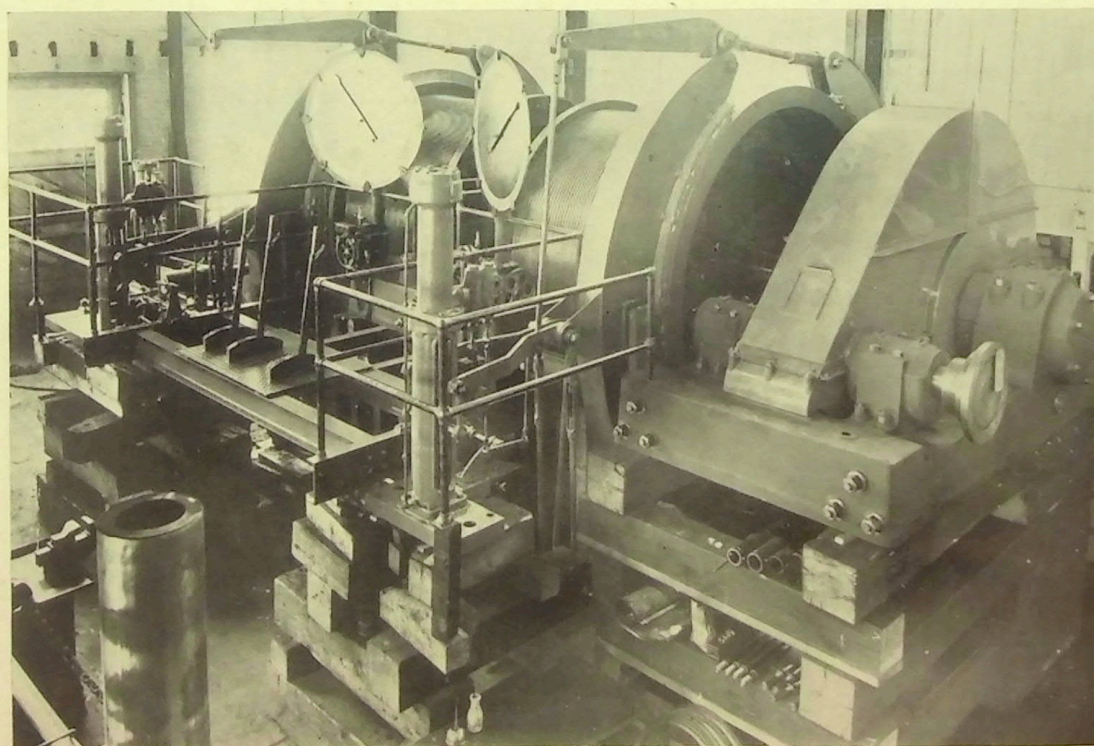
Sherwood mine hoist
Greenwood mine hoist
8' sheaves
Skips and cages
65 cu. ft. mine cars
Hoist drums
90 cu. ft. low head mine cars
Penn Mine scrapers
75 cu. ft. low head cars
52 cu. ft. mine cars
Double deck cage
Conveyor parts
2 large hoists for C. C. Iron Co's. new mine

From this outline you will readily see the company would be classed as an essential industry under the National Defense Program.

Adams Township, MI



Sub-Level Hoist for Penn Mine



8' Double Drum Hoist for Sherwood Mine