

Adams Township, MI

CHAMPION COPPER CO.

Draughtsman C Mason

Sketch No. \_\_\_\_\_

Baltic \_\_\_\_\_

DRAWING ROOM SKETCH.

Examiner \_\_\_\_\_

To be returned when Work is Finished.

Painesdale Mich., March 7 1921

*Order for bolts N° 3 Rock house bin*

- 48 bolts  $2\frac{1}{2}$ " X 1" Flat heads.
- 92 bolts  $2\frac{1}{2}$ " X  $\frac{3}{4}$ " Flat heads.
- 46 bolts 12" X  $\frac{3}{4}$ "  heads.
- 70 bolts  $12\frac{1}{2}$ " X  $\frac{3}{4}$ "  heads.
- 52 bolts  $11\frac{1}{4}$ " X  $\frac{3}{4}$ " Flat heads.
- 150 Spikes 8" X  $\frac{3}{4}$ " Flat heads.
- 44 bolts 21" X  $\frac{3}{4}$ "  heads.
- 130 bolts  $1\frac{3}{4}$ " X  $\frac{3}{4}$ " Flat heads.

*Bolts for the bin at #3 Baltic.*



ENGINEER'S OFFICE

Requisition No. \_\_\_\_\_

SKETCH NO.

# BALTIC MILLING COMPANY

Card No. \_\_\_\_\_

**B** 146

Drawn by Doran

Adams Township, MI

BALTIC, MICH., Feb. 15, 1908

Checked by Mason

SUBJECT Bolts for Stringer Plates #3 Rock House.

24-	Bolts	11 1/2" x 1"	Square hd
12-	"	14" x 1"	" "
24-	"	12" x 1"	" "
16-	"	10 1/2" x 1"	" "
<del>24</del>	- "	11 1/2" x 1"	Flat head.
92-	"	13 1/2" x 1"	" "
72-	"	12" x 1"	" "
<u>12</u>	"	18" x 1"	Flat heads
<u>468</u>			



Adams Township, MI

SKETCH NO.

B147

ENGINEER'S OFFICE

# BALTIC MINING COMPANY

BALTIC, MICH.,

March 7 1908

Requisition No. \_\_\_\_\_

Card No. \_\_\_\_\_

Drawn by C. Mason

Checked by \_\_\_\_\_

SUBJECT

Order for bolts No 3 Park house tin.

- 27 48 bolts 2 2/2" x 1" Flat heads.
- 92 bolts 2 2/2" x 3/4" flat heads
- 46 bolts 12" x 3/4"  heads
- 70 bolts 12 1/2" x 4 3/4"  heads
- 52 bolts 11 3/4" x 9 1/4" 4 flat heads
- 150 ~~bolts~~ 8 1/4" x 3 1/4" flat head spikes
- 44 bolts 2 1/4" x 3/4"  heads
- 130 bolts 1 3/4" x 3/4" flat heads

BALTIC MINING COMPANY



*Shaft House.*  
CHAMPION COPPER CO.

Sketch No. \_\_\_\_\_

Draughtsman \_\_\_\_\_

*HED*

DRAWING ROOM SKETCH.

Examiner \_\_\_\_\_

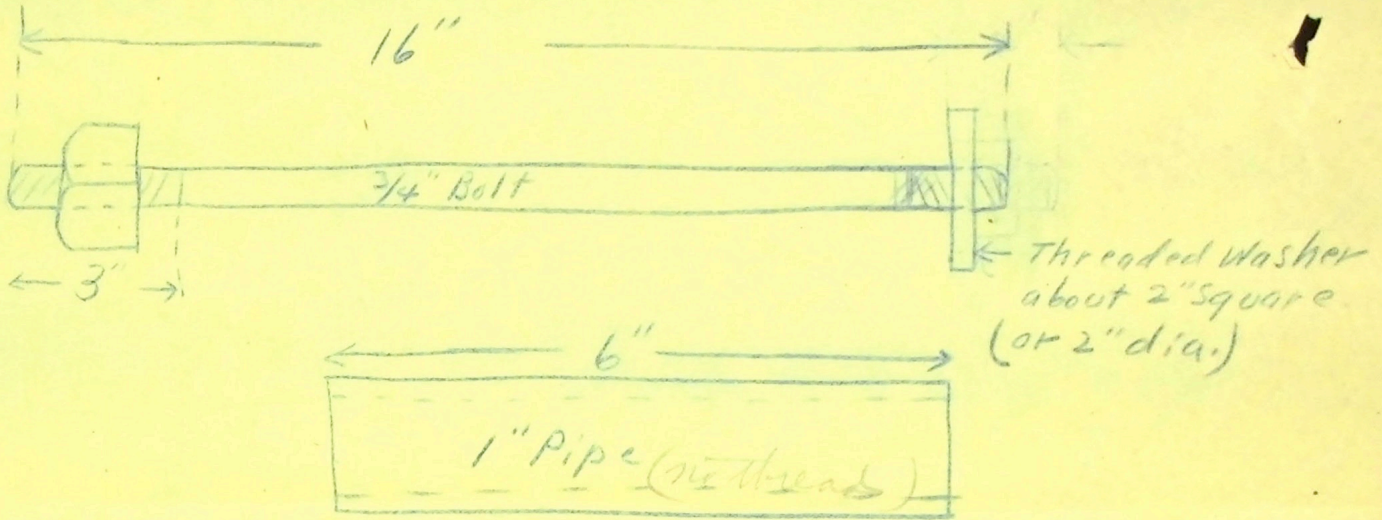
To be returned when Work is Finished.

Adams Township, MI

Painesdale Mich.,

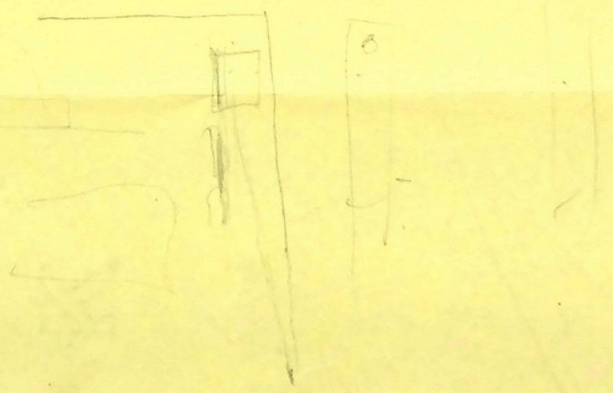
19

*Nov. 2 08*



*Pipe To go over Bolt*

*Anchor Bolts for Timber Hoist.*  
*Make 4 for B Shaft House*  
*" " " " " "*





DRAWING OFFICE SKETCH.

Order No. 39

To be returned when Work is Finished.

Copy Book \_\_\_\_\_ Page \_\_\_\_\_

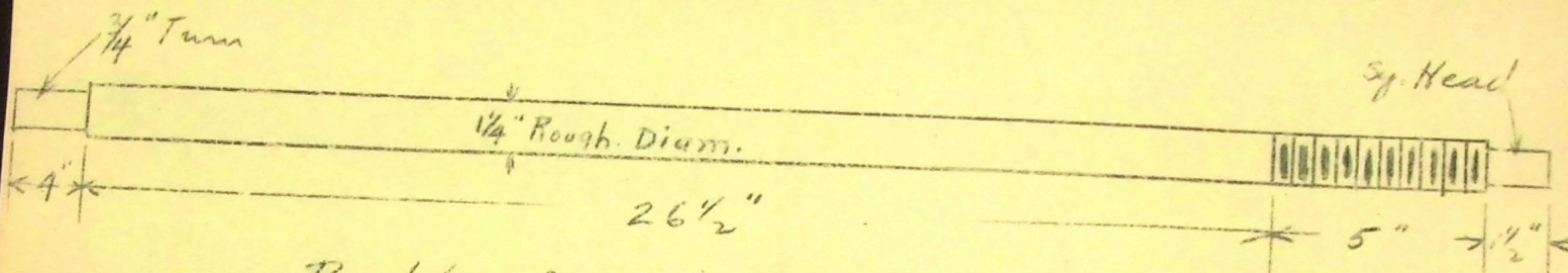
Draughtsman Seebey

Examiner \_\_\_\_\_

CHAMPION COPPER CO.

Painesdale, Mich., Nov 21 1905

Indeped.  
F.P. 1516-U.



Bolt for strainer in Water Line  
F" Compressor